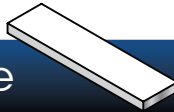
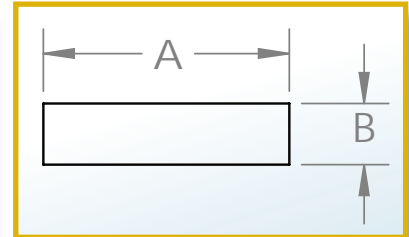


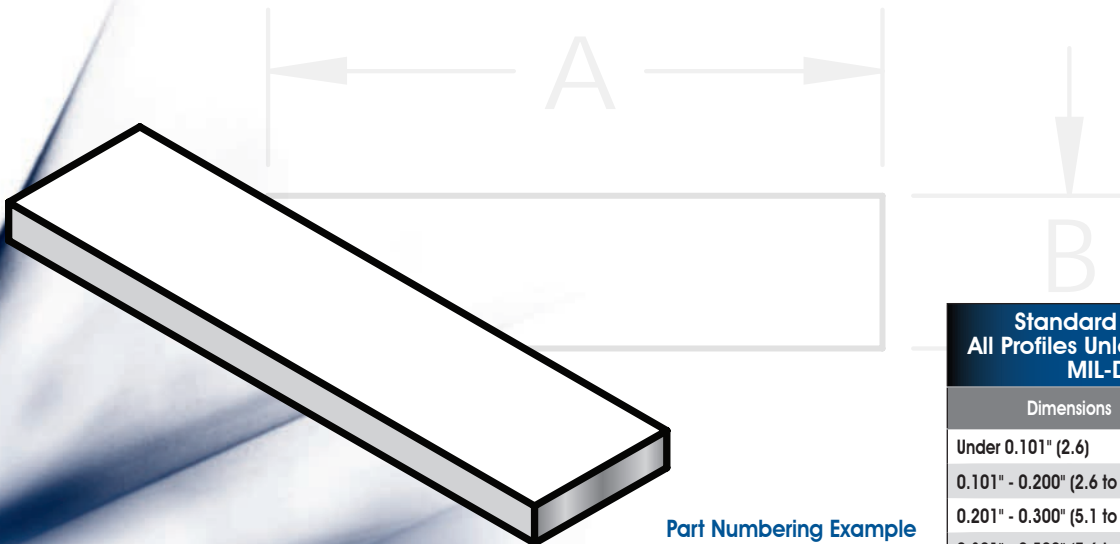
## Rectangle



Mil-DTL-83528 Part Number	Leader Tech Part Number	Nominal dimensions	
		A (width)	B (height)
M83528/009X001	5409-0001-XX	0.063 <i>1.60</i>	0.042 <i>1.07</i>
M83528/009X002	5409-0002-XX	0.095 <i>2.41</i>	0.062 <i>1.57</i>
M83528/009X003	5409-0003-XX	0.120 <i>3.05</i>	0.075 <i>1.91</i>
M83528/009X004	5409-0004-XX	0.125 <i>3.18</i>	0.062 <i>1.57</i>
M83528/009X005	5409-0005-XX	0.156 <i>3.96</i>	0.062 <i>1.57</i>
M83528/009X006	5409-0006-XX	0.250 <i>6.35</i>	0.062 <i>1.57</i>
M83528/009X007	5409-0007-XX	0.500 <i>12.70</i>	0.075 <i>1.91</i>
M83528/009X008	5409-0008-XX	0.500 <i>12.70</i>	0.125 <i>3.18</i>
M83528/009X009	5409-0009-XX	0.500 <i>12.70</i>	0.188 <i>4.78</i>
M83528/009X010	5409-0010-XX	0.750 <i>19.05</i>	0.062 <i>1.57</i>
M83528/009X011	5409-0011-XX	0.880 <i>22.35</i>	0.062 <i>1.57</i>
M83528/009X012	5409-0012-XX	1.000 <i>25.40</i>	0.250 <i>6.35</i>
M83528/009X013	5409-0013-XX	1.180 <i>29.97</i>	0.062 <i>1.57</i>



TechSil Rectangular Extrusions come in thirteen different sizes with multiple thicknesses and widths to fit your application. Conductive and non-Conductive Pressure Sensitive Adhesives can be applied to the strips for easy assembly if desired. When using a non-Conductive Adhesive only 50% of the mating surface should have PSA applied. Additional widths and thicknesses are available upon request. TechSil extrusions are available in all sixteen compounds and special formulations are also available.



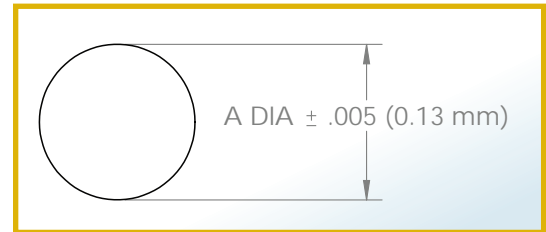
**Part Numbering Example**  
 5XXX-XXXX-MM  
 MM=LTE material code

Standard Tolerances for All Profiles Unless Superseded by MIL-DTL-83528	
Dimensions	Tolerance
Under 0.101" (2.6)	+/-0.005 (0.15)
0.101" - 0.200" (2.6 to 5.1)	+/-0.008 (0.2)
0.201" - 0.300" (5.1 to 7.6)	+/-0.010 (0.3)
0.301" - 0.500" (7.6 to 12.7)	+/-0.015 (0.4)
Over 0.500" (12.7)	+/-0.020 (0.5)

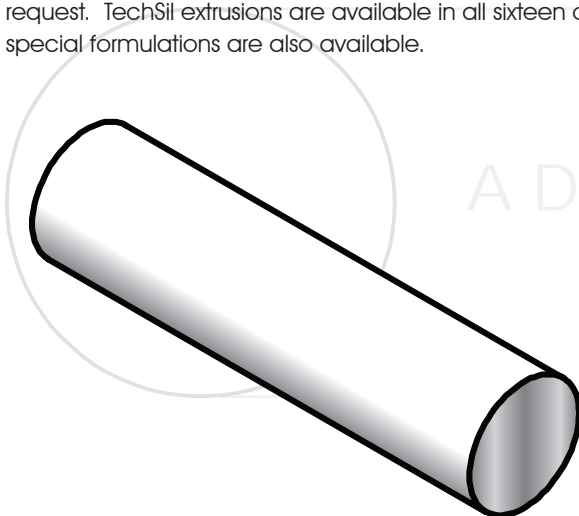
## Round



Mil-DTL-83528 Part Number	Leader Tech Part Number	Dimension A ± .005	Recommended Groove Dimension Width	Recommended Groove Dimension Height
M83528/001X001	5401-0001-XX	.040 <i>1.02</i>	0.050 <i>1.27</i>	0.030 <i>0.76</i>
M83528/001X002	5401-0002-XX	.053 <i>1.35</i>	0.062 <i>1.57</i>	0.040 <i>1.02</i>
M83528/001X003	5401-0003-XX	.062 <i>1.57</i>	0.070 <i>1.78</i>	0.047 <i>1.19</i>
M83528/001X004	5401-0004-XX	.070 <i>1.78</i>	0.083 <i>2.11</i>	0.050 <i>1.27</i>
M83528/001X005	5401-0005-XX	.080 <i>2.03</i>	0.090 <i>2.29</i>	0.060 <i>1.52</i>
M83528/001X006	5401-0006-XX	.093 <i>2.36</i>	0.103 <i>2.62</i>	0.070 <i>1.78</i>
M83528/001X007	5401-0007-XX	.103 <i>2.62</i>	0.118 <i>3.00</i>	0.074 <i>1.88</i>
M83528/001X008	5401-0008-XX	.119 <i>3.02</i>	0.130 <i>3.30</i>	0.090 <i>2.29</i>
M83528/001X009	5401-0009-XX	.125 <i>3.18</i>	0.139 <i>3.53</i>	0.093 <i>2.36</i>
M83528/001X010	5401-0010-XX	.139 <i>3.53</i>	0.157 <i>3.99</i>	0.101 <i>2.56</i>
M83528/001X011	5401-0011-XX	.188 <i>4.78</i>	0.210 <i>5.33</i>	0.141 <i>3.58</i>
M83528/001X012	5401-0012-XX	.216 <i>5.49</i>	0.241 <i>6.12</i>	0.160 <i>4.06</i>
M83528/001X013	5401-0013-XX	.250 <i>6.35</i>	0.275 <i>6.98</i>	0.187 <i>4.75</i>



TechSil Round and Hollow Round Extrusions come in over twenty-one sizes to fit your application. Grooves are recommended in your device to insure that the gasket is not over compressed. Both the Round and Hollow Round profiles can be bonded into O-Rings using an RTV cold bond or a Hot Vulcanized bond. Bonded O-Rings should have an Inside Diameter greater than 2 inches. If a smaller O-Ring is required please contact our Engineering Department. The Hollow Round profile offers a much wider operating range and lower compression forces are required. Neither shape can have Pressure Sensitive Adhesive applied. Additional sizes are available upon request. TechSil extrusions are available in all sixteen compounds and special formulations are also available.



A DIA ± .005 (0.13 mm)

**Part Numbering Example**  
**5XXX-XXXX-MM**  
**MM=LTE material code**

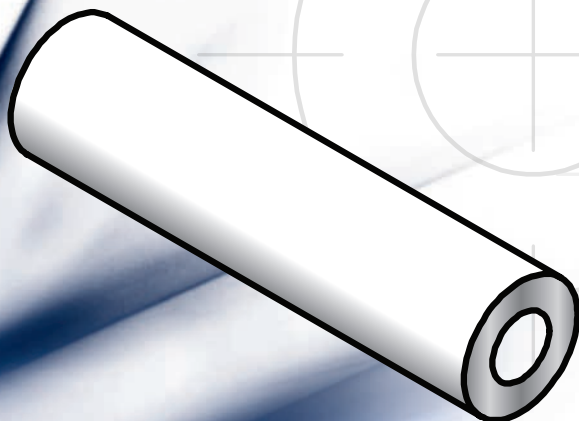
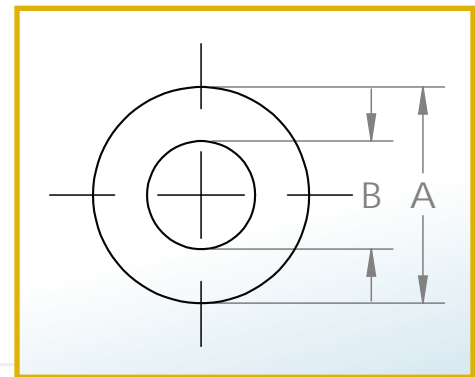
### Standard Tolerances for All Profiles Unless Superseded by MIL-DTL-83528

Dimensions	Tolerance
Under 0.101" (2.6)	+/-0.005 (0.15)
0.101" - 0.200" (2.6 to 5.1)	+/-0.008 (0.2)
0.201" - 0.300" (5.1 to 7.6)	+/-0.010 (0.3)
0.301" - 0.500" (7.6 to 12.7)	+/-0.015 (0.4)
Over 0.500" (12.7)	+/-0.020 (0.5)

## Hollow Round

Mil-DTL-83528 Part Number	Leader Tech Part Number	Nominal dimensions	Cross section area (cm <sup>2</sup> )	Recommended Groove Dimensions	
		A (width)	B (height)	Width	Height
M83528/011X001	5411-0001-XX	0.125 3.18	0.045 1.14	0.130 3.30	0.088 2.23
M83528/011X002	5411-0002-XX	0.156 3.96	0.050 1.27	0.160 4.06	0.109 2.76
M83528/011X003	5411-0003-XX	0.250 6.35	0.125 3.18	0.255 5.71	0.150 3.81
M83528/011X004	5411-0004-XX	0.312 7.92	0.192 4.88	0.317 8.05	0.156 3.96
M83528/011X005	5411-0005-XX	0.375 9.53	0.250 6.35	0.380 9.65	0.177 4.49
M83528/011X006	5411-0006-XX	0.125 3.18	0.062 1.57	0.130 3.30	0.077 1.95
M83528/011X007	5411-0007-XX	0.103 2.62	0.040 1.02	0.107 2.72	0.073 1.85
M83528/011X008	5411-0008-XX	0.177 4.50	0.079 2.01	0.182 4.62	0.120 3.05

TechSil Round and Hollow Round Extrusions come in over twenty-one sizes to fit your application. Grooves are recommended in your device to insure that the gasket is not over compressed. Both the Round and Hollow Round profiles can be bonded into O-Rings using an RTV cold bond or a Hot Vulcanized bond. Bonded O-Rings should have an Inside Diameter greater than 2 inches. If a smaller O-Ring is required please contact our Engineering Department. The Hollow Round profile offers a much wider operating range and lower compression forces are required. Neither shape can have Pressure Sensitive Adhesive applied. Additional sizes are available upon request. TechSil extrusions are available in all sixteen compounds and special formulations are also available.



**Part Numbering Example**  
 5XXX-XXXX-MM  
 MM=LTE material code

Standard Tolerances for All Profiles Unless Superseded by MIL-DTL-83528	
Dimensions	Tolerance
Under 0.101" (2.6)	+/-0.005 (0.15)
0.101" - 0.200" (2.6 to 5.1)	+/-0.008 (0.2)
0.201" - 0.300" (5.1 to 7.6)	+/-0.010 (0.3)
0.301" - 0.500" (7.6 to 12.7)	+/-0.015 (0.4)
Over 0.500" (12.7)	+/-0.020 (0.5)