

CHAMP ACTION PIN.

1. PURPOSE 目的

Define the packaging specification and packaging method of CHAMP ACTION PIN.

订定 CHAMP ACTION PIN 产品之包装规格及包装方式。

2. APPLICABLE PRODUCT 适用范围

TYPE	Product Part No.	Description
TYPE A	6761178-1	RCPT ASSY,50 POSN,SHLD,ACTION PIN
	1761178-1	RCPT ASSY,50 POSN,SHLD,ACTION PIN
	1116760-1	RCPT ASSY 64 POSN ACTN PIN
	6116760-1	RCPT ASSY 64 POSN ACTN PIN
	1116754-4	RCPT ASSY ACTN PIN CHAMP-LOK
	6116754-4	RCPT ASSY ACTN PIN CHAMP-LOK
	1116694-1/2/3	RCPT ASSY 64 POSN ACTN PIN CHAMP
	6116694-1/2/3	RCPT ASSY 64 POSN ACTN PIN CHAMP
	1116641-4	PLUG ASSY 50 POSN ACTN PIN CHAMP-LOK
	6116641-4	PLUG ASSY 50 POSN ACTN PIN CHAMP-LOK
	1116551-1	RCPT ASSY 50 POSN SHLD ACTN PIN SCR-LK
	6116551-1	RCPT ASSY 50 POSN SHLD ACTN PIN SCR-LK
	2057095-1	Recept. Ass'y, 50 Posn, Shld, AP, Champ
	1116502-1	RCPT ASSY 50 POSN ACTN PIN EMI CHAMP
	6116502-1	RCPT ASSY 50 POSN ACTN PIN EMI CHAMP
	1116336-1	RCPT ASSY 50 POSN CTN PIN SHLD BD-LK BAIL LOCK
	6116336-1	RCPT ASSY 50 POSN CTN PIN SHLD BD-LK BAIL LOCK
	569286-1	RCPT ASSY 50 POSN W/INSERT SHLD ACTN PIN CHAMP
	5569286-1	RCPT ASSY 50 POSN W/INSERT SHLD ACTN PIN CHAMP
	2007381-1	RCPT ASSY,50 POSN W/INSERT,SHLD,ACTN PIN,CHAMP
	5557984-2	RCPT ASSY 50 POSN SHLD ACTN PIN CHAMP
	557984-1/2	RCPT ASSY 50 POSN SHLD ACTN PIN CHAMP
	557605-1	PLUG ASSY 50 POSN ACTN PIN W/SLF-RTND &BAIL LK HDW CHAMP-LOK
	5557605-1	PLUG ASSY 50 POSN ACTN PIN W/SLF-RTND &BAIL LK HDW CHAMP-LOK
	5556622-1/2	RCPT ASSY 64 POSN SHLD ACTN PIN

DR Sam Wu	CHK Kevin Zhou	APVD Ansin Yang
---------------------	--------------------------	---------------------------

2. APPLICABLE PRODUCT 适用范围

TYPE	Product Part No.	Description
TYPE A	556622-1/2	RCPT ASSY 64 POSN SHLD ACTN PIN
	1888420-1	Recept. Ass'y, Vert., 64 pos., shielded
	555757-2	RCPT ASSY SHLD 36 POSN LPF BAIL LK ROBOTIC PCB CHAMP
	5555757-2	RCPT ASSY SHLD 36 POSN LPF BAIL LK ROBOTIC PCB CHAMP
	554759-1	PLUG ASSY 64 POSN SLF-RTND ACTNPIN CHAMP LOK
	5554759-1	PLUG ASSY 64 POSN SLF-RTND ACTNPIN CHAMP LOK
	554758-1/3	PLUG ASSY 50 POSN SLF-RTND ACTN PIN CHAMP-LOK
	5554758-X	PLUG ASSY 50 POSN SLF-RTND ACTN PIN CHAMP-LOK
	554753-1/2	RCPT ASSY 50 POSN SLF-RTND ACTN PIN CHAMP-LOK
	553444-4/5/8	PLUG ASSY CTN PIN CHAMP-LOK
	5553444-4/5/8	PLUG ASSY CTN PIN CHAMP-LOK
	553443-4/5/6/8	RCPT ASSY ACTN PIN CHAMP-LOK
	5553443-4/5/6/8	RCPT ASSY ACTN PIN CHAMP-LOK
	406924-1	PLUG ASSY 64 POSN SHLD ACT PIN SCR LK
	5406924-1	PLUG ASSY 64 POSN SHLD ACT PIN SCR LK
	406875-1	RCPT ASSY 50 POSN ACT -PIN -HSG SLDR-TERM
	5406875-1	RCPT ASSY 50 POSN ACT -PIN -HSG SLDR-TERM
TYPE B	5406874-1	RCPT ASSY 50 POSN SHLD LPF VERT MTG CHAMP
	406874-1	RCPT ASSY 50 POSN SHLD LPF VERT MTG CHAMP
TYPE C	1116736-1	RCPT ASSY 36 POSN SHLD LPF SCL CTN PIN CHAMP
	6116736-1	RCPT ASSY 36 POSN SHLD LPF SCL CTN PIN CHAMP
	555750-1	HSG ASSY RCPT 36 POSN SHLD SOLDER PIN CHAMP
	5555750-1	HSG ASSY RCPT 36 POSN SHLD SOLDER PIN CHAMP
	554857-1	RCPT ASSY SHIELDED 24 POSN SOLDER PIN CHAMP
	5554857-1	RCPT ASSY SHIELDED 24 POSN SOLDER PIN CHAMP
	553444-3	PLUG ASSY CTN PIN CHAMP-LOK
	5553444-3	PLUG ASSY CTN PIN CHAMP-LOK
	5553443-3	RCPT ASSY ACTN PIN CHAMP-LOK
	553443-3	RCPT ASSY ACTN PIN CHAMP-LOK
TYPE D	1116754-1	RCPT ASSY ACTN PIN CHAMP-LOK
	6116754-1	RCPT ASSY ACTN PIN CHAMP-LOK
	553444-2	PLUG ASSY CTN PIN CHAMP-LOK
	5553444-2	PLUG ASSY CTN PIN CHAMP-LOK
	553443-1/2	RCPT ASSY ACTN PIN CHAMP-LOK
	5553443-1/2	RCPT ASSY ACTN PIN CHAMP-LOK

3. PACKAGING MATERIAL 包装材料

Package	Part No.	Description	Usage			
			TYPE A	TYPE B	TYPE C	TYPE D
INNER	623246-1	TRAY FOR SMALL ACTION PIN	-	-	1/30	1/30
	623247-1	TRAY FOR ANGLED ACTION PIN	1/20	1/20	-	-
	623845-5	SHEETING	1/1	-	-	1/1
	623268-1	CHIPBOARD FOR ACTION PIN	-	-	1/1 (for 松针)	1/1 (for 松针)
	623268-2	CHIPBOARD FOR ACTION PIN	1/1 (for 松针)	-	-	-
MIDDLE	110756-9	PAPER PAD	1/140	1/140	1/210	1/210
	4083117	IS SHEET(INSTR SH 408-3117)	1/140	1/140	1/210	1/210
	110455-2	BUBBLE PAD	2/140	2/140	2/210	2/210
OUTER	12120-1	BOX	1/140	1/140	1/210	1/210
	623865-5	LABEL	1/140	1/140	1/210	1/210

	Inner	Middle	Outer
LABEL	-	-	623865-5
SEALING	-	-	Tape

4. PACKAGING QUANTITY 包装数量

TYPE	Inner	Middle	Outer
TYPE A、B	20 pcs/tray	-	140 pcs/carton
TYPE C、D	30 pcs/tray	-	210 pcs/carton

5. PACKING METHOD 包装方法

5.1. Place products into tray as shown in figure.

如下图1~4所示,将产品放入TRAY中。

For angled tray, 623247-1, 产品放入TRAY的方向如下图1、图4所示(only for 406874/5406874-1):



图 1

5. PACKING METHOD 包装方法

For angled tray, 623247-1, 产品放入TRAY的方向如下图2、图4所示(for others):

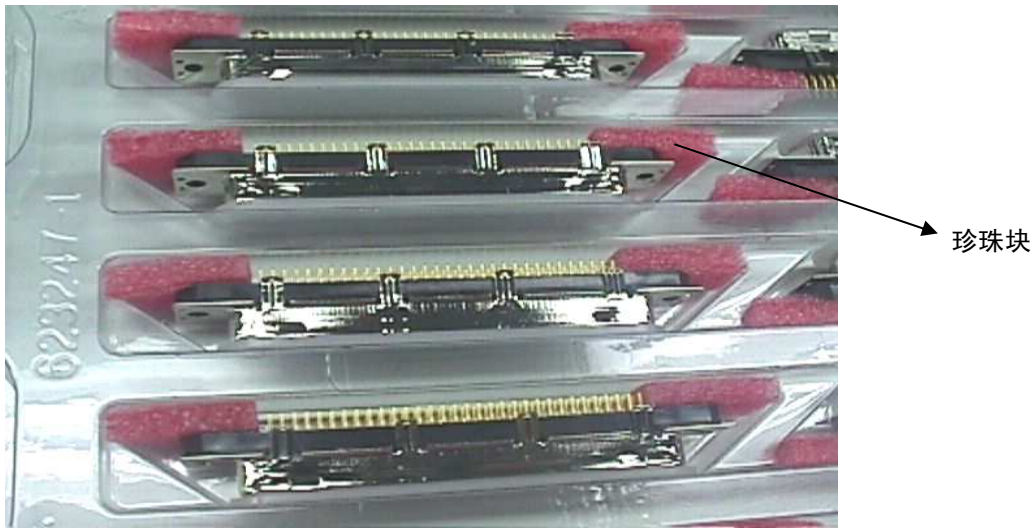


图 2

For small tray, 623246-1, 产品放入TRAY的方向如下图3、图4所示:



图 3

For all: 如下图4所示, 所有的A/P的放置方向统一为"梯型"口的宽边朝上, 短边朝下放置。

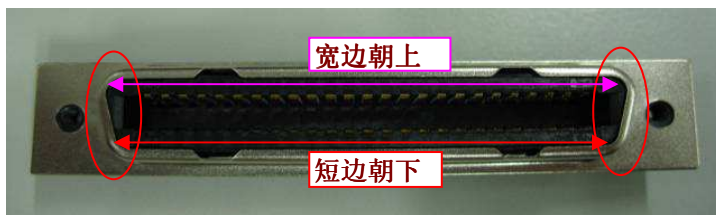


图 4

5. PACKING METHOD 包装方法

Only for TYPE A 、 D :

Place fill the void use sheeting of proper dimension.

如上图所示用适当大小的珍珠块塞住空隙。

注：珍珠块的大小以产品在TRAY中不易晃动为准。

Only for 松针产品:

Place one piece of paper pad to the side of pin of connector.

在产品的PIN的一边竖放一块白色纸板。

5.2. Place another tray onto previous tray with products. position each individual tray in reverse direction(at 180 degree to the tray below).

盖上另一个装满产品的TRAY，TRAY与TRAY之间的放置方向相反(即旋转180度)。

5.3. Repeat step 5.2. Five times.

重复5.2. 步五次(共叠放7个TRAY)。

5.4. Set up a box & secure bottom with flaps.

折叠好一个包装箱，并用胶带封箱。

5.5. Place a piece of bubble pack on the bottom of the box, bubble facing down.

放一块气泡垫入箱底，气泡面朝下。

5.6. Place 7 tray loaded products into box.

将7个装满产品的TRAY放入箱中。

5.7. Place one piece of paper pad & one IS sheet & one piece of bubble pack, bubble facing up on top of last tray.

在最后一个TRAY的上面放一张纸板，接着放一张说明书，最后再放一块气泡垫，气泡面朝上。

5.8. Seal the box with tape. And place product identification label in "product id" marked on box.

用胶带封箱，在箱外印有“PRODUCT ID”标识处贴上外标签。

注：对出货至华为客户的产品需要在外箱上贴一张客户标签，标签物料编号为 623865-2.

贴法：贴在与外箱标签对应侧面的右上角的位置。标签样板见打标签样板处。