

PRODUCT NUMBER

5 2 6 0 1 - X X X - X X X X LF

PLATING

S=15µ"[0.38µm]GOLD ON CONTACT AREA (NOTE 13)
100µ"[2.54µm]TIN ON TAIL
G=30µ"[0.76µm]GOLD ON CONTACT AREA (NOTE 13)
100µ"[2.54µm]TIN ON TAIL

LEAD FREE OPTION
NOTE 10,11,12

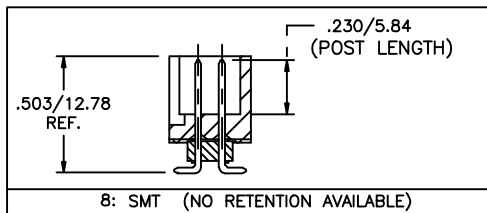
PACKAGE NOTE 5

RETENTION
R= RETENTIVE LEG (NOTE 6)

POLARIZATION
NOTE 9

TAIL		
+	.090/2.29	OBS.
-	.142/2.84	OBS.
4	.120/3.05	
6	.150/3.81	
-	.675/17.15	OBS.
8	SMT	

	TOTAL POSITIONS	HDR. STYLE
10	2 x 5	B
14	2 x 7	C
16	2 x 8	D
20	2 x 10	D
26	2 x 13	D
30	2 x 15	D
34	2 x 17	D
40	2 x 20	D
44	2 x 22	D
50	2 x 25	D
60	2 x 30	D

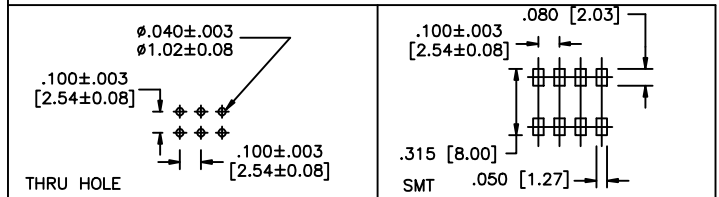
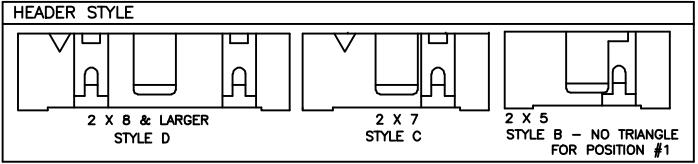
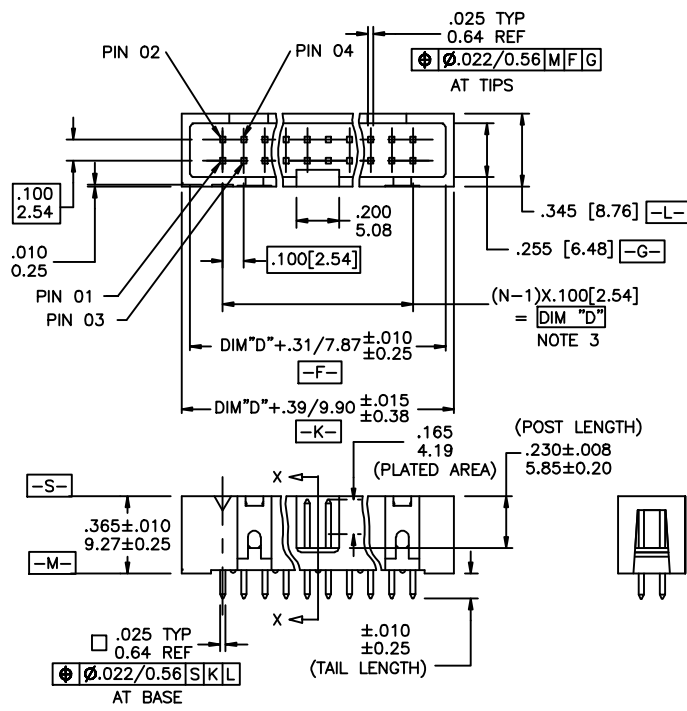


NOTES:

- HOUSING MAT'L: HIGH TEMPERATURE THERMOPLASTIC. UL94V-0
COLOR: BLACK
OR
MINERAL FILLED LCP FLAME RETARDANT
PER UL-94V-0. COLOR: BLACK.
- PIN MATERIAL: PHOSPHOR-BRONZE
- TO DETERMINE DIMENSIONS:
N = NUMBER OF POSITIONS PER ROW
EXAMPLE: 10 POS.,(N-1) x .100[2.54]=.900[22.86]
- 3 LBS./1.36 KG MIN. RETENTION
- PACKAGED IN TRAYS,
PART NUMBER FOLLOWS BY "T" SUFFIX ARE PACKAGED
TAPE ON REEL WITH PACK-UP INSTALLED. VACUUM CAP TO BE
CENTRALLY LOCATED REGARDLESS OF NUMBER OF POSITIONS (SHEET 3)
- RETENTIVE LEG APPLICABLE TO TAIL LENGTHS .125/3.18 MAX.
5LB/2.3KG MAX INSERTION FORCE AND .25LB./1KG MIN RETENTION FORCE
PER RETENTIVE PIN USING .062/1.57 THICK CIRCUIT BOARD AND RECOMMENDED
HOLE PATTERN. RETENTIVE LOCATION AT THE DISCRETION OF THE MANUFACTURER.
RETENTION PIN MAY BE SHIFTED TO NEXT POSITION.
- OMIT FROM PRODUCT NUMBER IF THIS FEATURE IS NOT APPLICABLE.
- UNDERPLATING: 50µ"/1.27µm Ni.
- FOR POLARIZATION SPECIFY POSITION NUMBER (i.e. 03 = PIN 3) TO OMIT PIN.
OMIT FROM PRODUCT NUMBER IF THIS FEATURE IS NOT APPLICABLE.
- ADD "Lf" SUFFIX AT THE END OF PART NUMBER FOR LEAD FREE OPTION.
- THE HOUSING WILL WITHSTAND EXPOSURE TO 260°C PEAK TEMPERATURE
FOR 15 SECONDS IN A WAVE SOLDER APPLICATION WITH A 1.5mm
MINIMUM THICK CIRCUIT BOARD. SEE APPLICATION NOTES/PROCEDURES
IF THEY ARE AVAILABLE.

THE HOUSING WILL WITHSTAND EXPOSURE TO 260°C PEAK TEMPERATURE
FOR 20 SECONDS IN A CONVECTION, INFRA-RED OR VAPOR PHASE
REFLOW OVEN. SEE APPLICATION NOTES/PROCEDURES IF THEY ARE AVAILABLE.
- THIS PRODUCT MEETS EUROPEAN UNION DIRECTIVES AND OTHER
COUNTRY REGULATION AS DESCRIBED IN GS-22-008.
- PLATING OPTIONS:
MAY BE EITHER GOLD OR GXT PLATED AT MANUFACTURER'S OPTION.

mat'l. code		surface ISO 902	tolerance ISO 406 ISO 1101	projection	product family QUICKIE
ltr	ecn no	dr	date	tolerances unless otherwise specified	title
P	M07-0185	MHT	4/16/07	angles	.100/2.54mm LOW PROFILE SHROUDED VERTICAL HEADER
R	M08-001d	MHT	1/11/07	linear	
S	M08-0117	MHT	4/24/08	0°±2'	scale 1:1
T	M08-0118	MHT	4/22/08	dr	D. INGRAM 7/7/99
U	M08-0237	MHT	5/25/08	engr	L. GREEN 7/12/99
V	M08-0261	MHT	8/19/08	chr	L. GREEN 7/12/99
W	M08-0279	MHT	9/30/08	appd	L. GREEN 7/21/99
sheet	revision	w	w	w	
index	sheet	1	2	3	



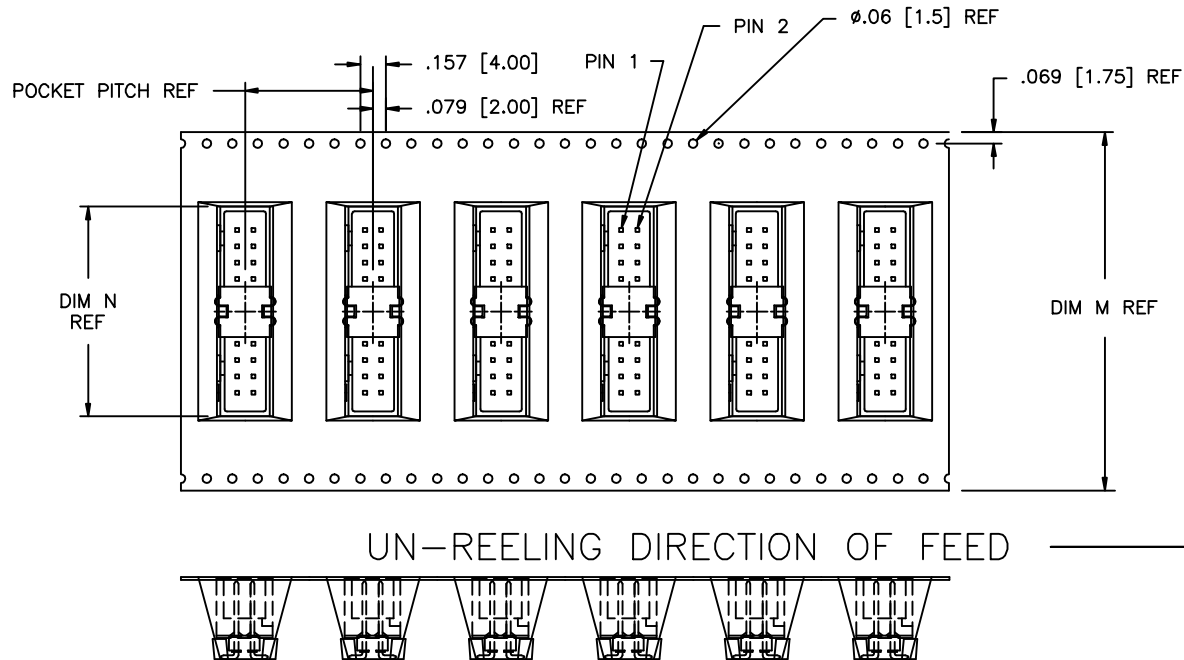
mat'l. code		surface	tolerance	projection	product family
ltr	ecn no	ISO 902	ISO 406	ISO 1101	QUICKIE
dr	date	tolerances unless otherwise specified		INCH/MM	title
w		angles	linear		
		0° ± 2'	XXX±.01/XXX±.03		.100/2.54mm LOW PROFILE SHROUDED VERTICAL HEADER
			XXX±.005/XXX±.013		dwg no
dr	D. INGRAM	7/7/99	XXX±.0020/XXX±0.05		sheet 2 of 3 size
engr	L. GREEN	7/12/99			52601 A3
chr	L. GREEN	7/12/99			type
appd	L. GREEN	7/21/99			Product Customer Drawing
sheet index	revision sheet				



Copyright FCI

PRODUCT No. NOTE 10	NO. OF POSITIONS	HSG. STYLE	POLARIZED POSITION	PACKAGING	POCKET PITCH	DIM M	DIM N
52601-S10-801T	2 X 5	B	01	TAPE-ON-REEL	0.787/20.00	1.260/32.00	0.790/20.07
52601-S10-805T	2 X 5	B	05	TAPE-ON-REEL	0.787/20.00	1.260/32.00	0.790/20.07
52601-S10-807T	2 X 5	B	07	TAPE-ON-REEL	0.787/20.00	1.260/32.00	0.790/20.07
52601-S14-807T	2 X 7	C	07	TAPE-ON-REEL	0.787/20.00	1.732/44.00	1.090/27.69
52601-S14-80714T	2 X 7	C	07,14	TAPE-ON-REEL	0.787/20.00	1.732/44.00	1.090/27.69
52601-X16-8T	2 X 8	D	-	TAPE-ON-REEL	0.787/20.00	1.732/44.00	1.090/27.69
52601-X20-8T	2 X 10	D	-	TAPE-ON-REEL	0.787/20.00	2.204/56.00	1.290/32.77
52601-X30-8T	2 X 15	D	-	TAPE-ON-REEL	0.787/20.00	2.834/72.00	1.786/45.37

* SPECIAL CUSTOMER



mat'l. code	surface	tolerance	projection	product family
ltr	ISO 1302	ISO 406	ISO 1101	QUICKIE
ecn no	tolerances unless otherwise specified		INCH/MM	title
dr	linear	XXX±.01/XXX.03	scale 1:1	.100/2.54mm LOW PROFILE SHOROUDED VERTICAL HEADER
w	0'±2'	XXX±.006/XXX.013		dwg no
		XXX±.0020/XXX±0.051		sheet 3 of 3 size
	dr	D. INGRAM 7/7/99		52601 A3
	engr	L. GREEN 7/12/99		type
	chr	L. GREEN 7/12/99		Product Customer Drawing
	appd	L. GREEN 7/21/99		
sheet	revision			
index	sheet			