

EAO – Your Expert Partner for Human Machine Interfaces

52-475.036 - Selector switch 2 positions square - Actuator

52-475.036 - Selector switch 2 positions square - Actuator



Attention: The preview is based on a sample product. This can differ from your current configuration.

Attribute

Design	flush
Front dimension	24 mm x 24 mm
Front form	square
IP front protection	IP65
Contacts	1 NO
Contact material	Gold
Lever illumination	optional illuminative
Lever material	plastic
Lever shape	short
Rotary positions	2
Switching action	Rest - Maintained
Switching angle	90° right
Switching current	0.1 A
Switching system	Low-level element
Switching voltage	42 V
Terminal	Universal terminal
Weight	0.007 kg
Switching rating	42 V @ 0,1 A

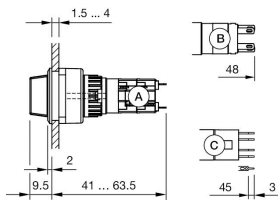
Function

Selector switch

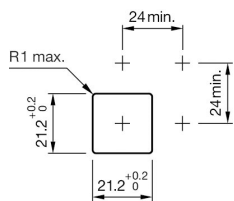
EAO – Your Expert Partner for Human Machine Interfaces

52-475.036 - Selector switch 2 positions square - Actuator

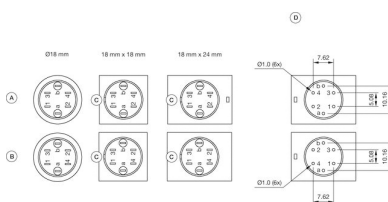
Dimensions



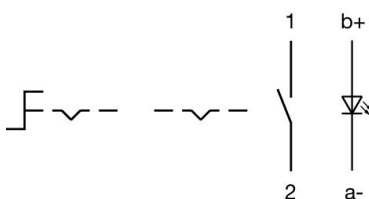
Mounting cut-outs



Component layouts



Wiring diagrams



Additional information

Illuminative

Contacts: NC = Normally closed, NO = Normally open

Illuminative

Contacts: NO = Normally open