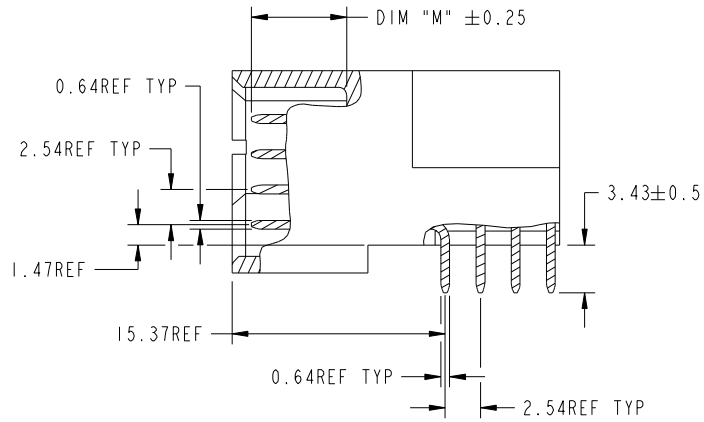


Tous droits strictement reserves. Reproduction ou communication a des tiers interdite sous quelque forme que ce soit sans autorisation écrite du propriétaire. Propriete de c FCI. Droits de reproduction FCI.

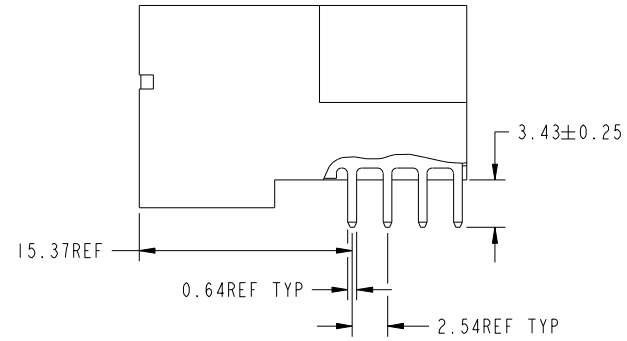
All rights strictly reserved. Reproduction or issue to third parties in any form whatever is not permitted without written authority from the proprietor. Property of FCI. Copyright FCI.



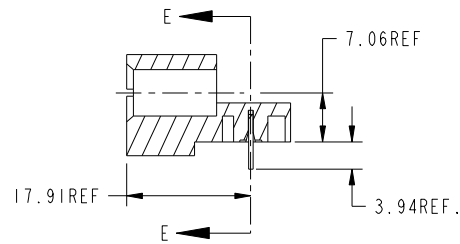
PRODUCT NUMBER
51939-318--
NOTE ③



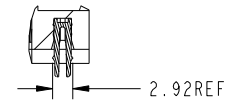
BROKEN-OUT SECTION A-A
SCALE 2:1



BROKEN-OUT SECTION B-B
SCALE 2:1



SECTION C-C



SECTION E-E

mat'l code				0	tolerances unless otherwise specified		CUSTOMER		FCI	
ltr	ecn no.	dr	date	linear	0.X ± 0.3	COPY		www.fciconnect.com		
A					0.XX ± 0.13	projection		title 12S + 6P		
				angles	0.XXX ± 0.051			RIGHT ANGLE SOLDER HEADER		
				dr	Jerome Chen 09/07/07			product family	PwrBlade	code
				enr	Jerome Chen 09/07/07	scale		size	dwg no	213
				chr	Garh Hsieh 09/07/07	1:1		A	51939-318	sheet
				appd	Joseph Hsia 09/07/07					2 of 4
sheet index	revision sheet									

cage code 22526

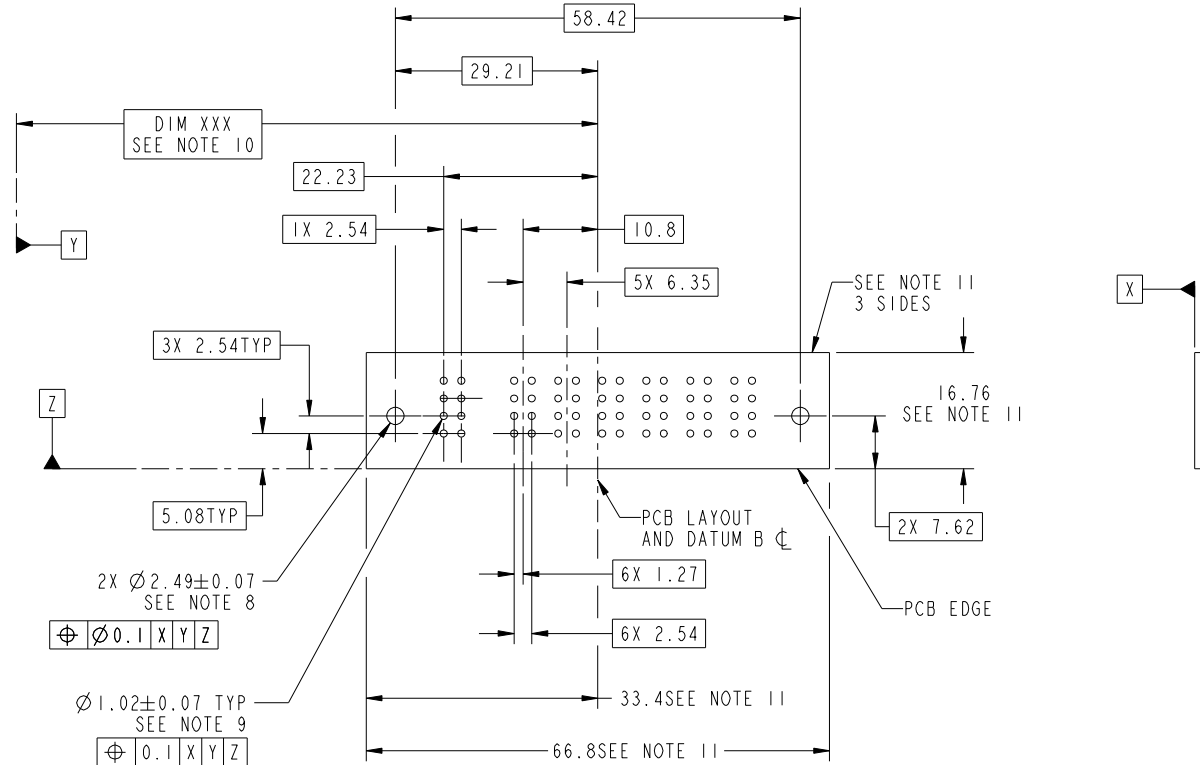
Pro/E

Tous droits strictement reserves. Reproduction ou communication a des tiers interdite sous quelque forme que ce soit sans autorisation écrite du propriétaire. Propriete de c FCI. Droits de reproduction FCI.



All rights strictly reserved. Reproduction or issue to third parties in any form whatever is not permitted without written authority from the proprietor. Property of FCI. Copyright FCI.

PRODUCT NUMBER
51939-318--
NOTE ③



RECOMMENDED PCB LAYOUT

mat'l code				0	tolerances unless otherwise specified		CUSTOMER		 www.fciconnect.com		
ltr	ecn no.	dr	date	linear	0.X ± 0.3		COPY		title		
A					0.XX ± 0.13		projection		12S + 6P		
					0.XXX ± 0.051				RIGHT ANGLE SOLDER HEADER		
				angles	0° ± 2°				product family PwrBlade code		
		dr	Jerome Chen	09/07/07			size		213		
		enr	Jerome Chen	09/07/07			dwg no		3 of 4		
		chr	Garh Hsieh	09/07/07			scale		sheet		
		appd	Joseph Hsia	09/07/07			1:1		3 of 4		
sheet index		revision sheet									

cage code 22526

Pro/E

Tous droits strictement reserves. Reproduction ou communication a des tiers interdite sous quelque forme que ce soit sans autorisation ecrite du proprietaire. Propriete de c FCI. Droits de reproduction FCI.



All rights strictly reserved. Reproduction or issue to third parties in any form whatever is not permitted without written authority from the proprietor. Property of FCI. Copyright FCI.

PRODUCT NUMBER
51939-318--
NOTE (3)

NOTES:

1. DIMENSIONS AND TOLERANCES ARE IN ACCORDANCE WITH ASME Y14.5M, 1994 UNLESS OTHERWISE SPECIFIED.

CONNECTOR NOTES:

- (2) HOUSING MATERIAL: UL 94 V-0 GLASS FILLED
HIGH-TEMP THERMOPLASTIC
POWER CONTACT MATERIAL: COPPER ALLOY
SIGNAL PIN MATERIAL: COPPER ALLOY
- 3. PLATING:
SEE PRINT 10064183 FOR PLATING SPEC OF 51939-318; 51939-318LF
- (4) MANUFACTURER'S NAME, P/N, AND DATE CODE TO APPEAR ON THIS SURFACE.
- 5. PRODUCT SPECIFICATION GS-12-149.
APPLICATION SPECIFICATION BUS-20-067.
- 6. PACKAGED IN TRAYS.

PCB NOTES:

- 7. ALL HOLE DIAMETERS ARE FINISHED HOLE SIZE.
- (8) MOUNTING HOLES, WHERE APPLICABLE, ARE UNPLATED.
- (9) $\varnothing 1.151 \pm 0.025$ DRILLED HOLES PLATED WITH 0.008 MIN SnPb OVER 0.03 TO 0.08 Cu PLATING TO ACHIEVE $\varnothing 1.02 \pm 0.07$ HOLE.
- (10) "DIM XXX" TO BE DETERMINED BY THE CUSTOMER.
- (11) CONNECTOR KEEP-OUT ZONE.

mat'l code				0	tolerances unless otherwise specified		CUSTOMER		
ltr	ecr no.	dr	date	linear	0.X ± 0.3		COPY		www.fciconnect.com
A					0.XX ± 0.13		projection		
					0.XXX ± 0.051				
				angles	0° ± 2°				product family PwrBlade
				dr	Jerome Chen	09/07/07	size		code 213
				enrg	Jerome Chen	09/07/07	dwg no		sheet 4 of 4
				chr	Garh Hsieh	09/07/07	scale		
				appd	Joseph Hsia	09/07/07	1:1		A 51939-318
sheet index	revision sheet								

cage code 22526

Pro/E