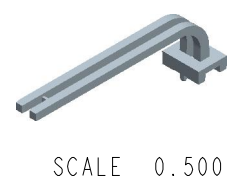
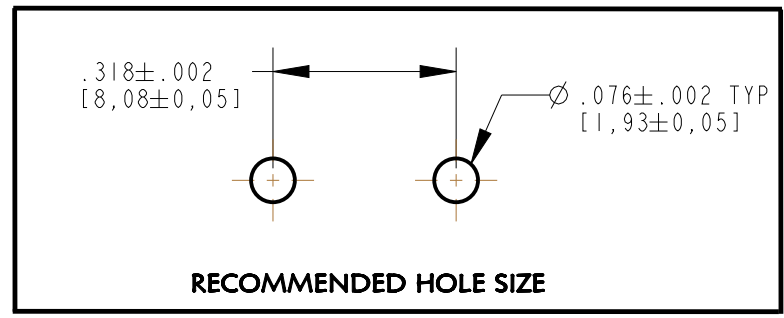
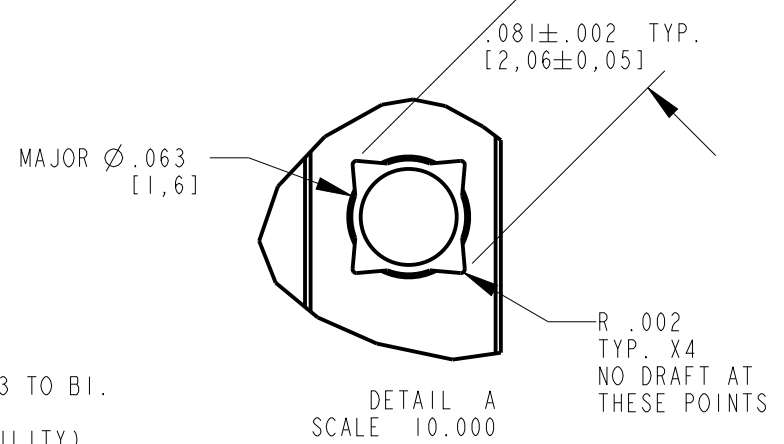
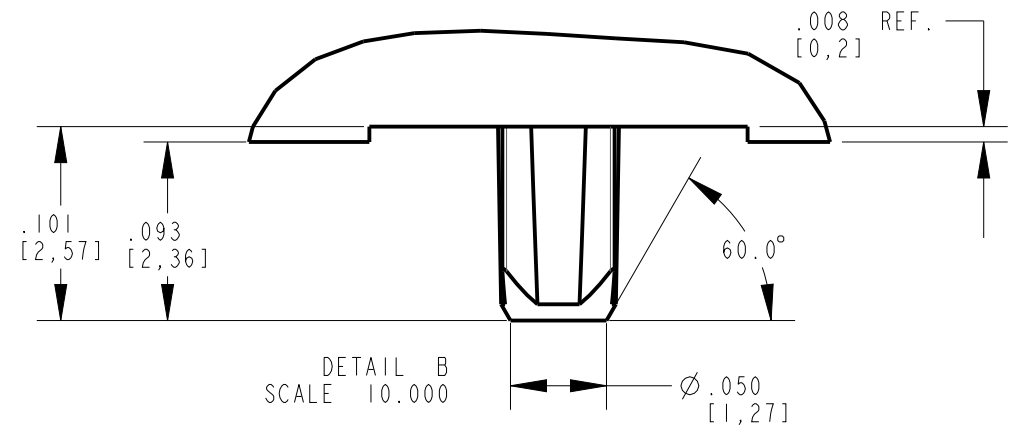
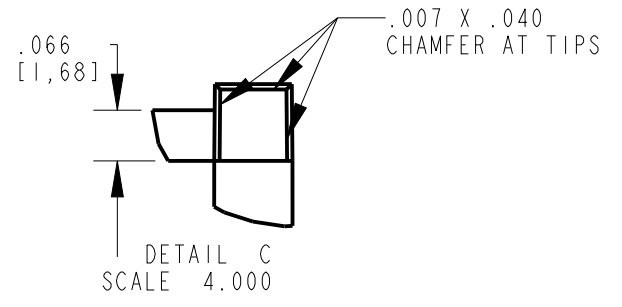
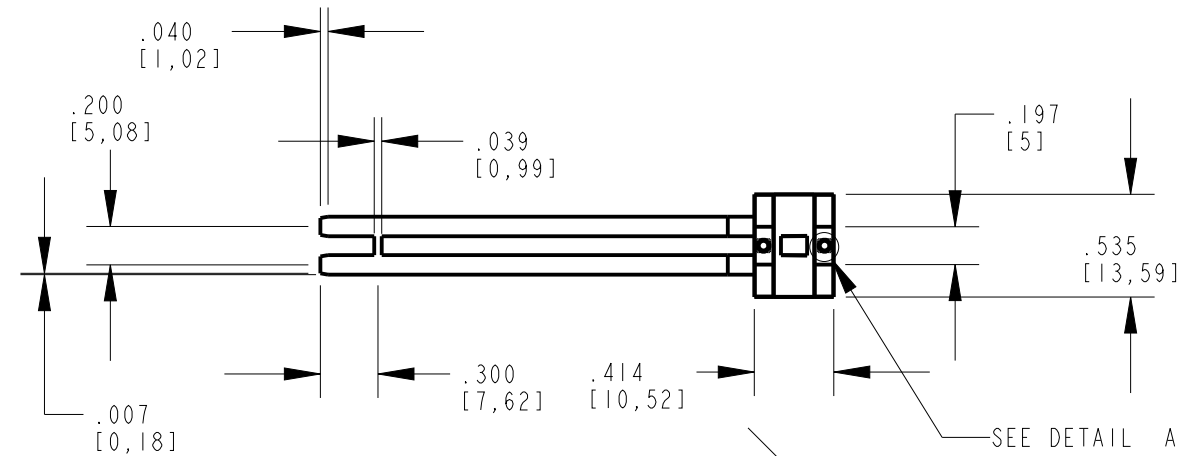
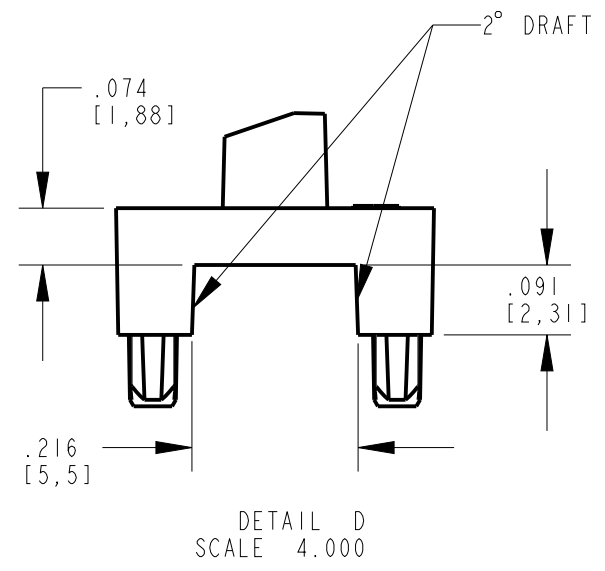
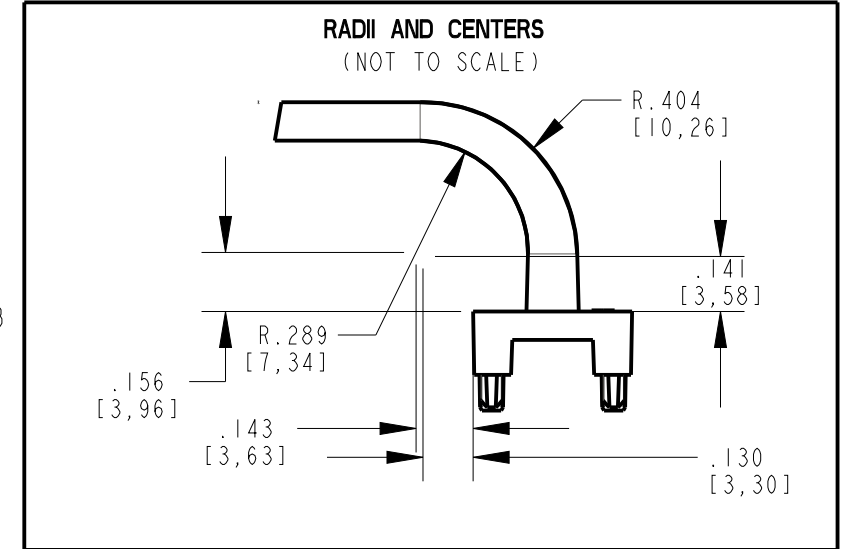
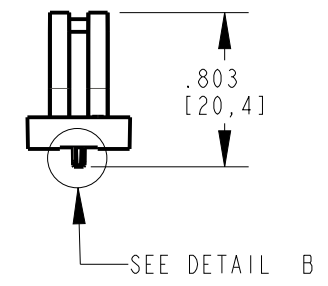
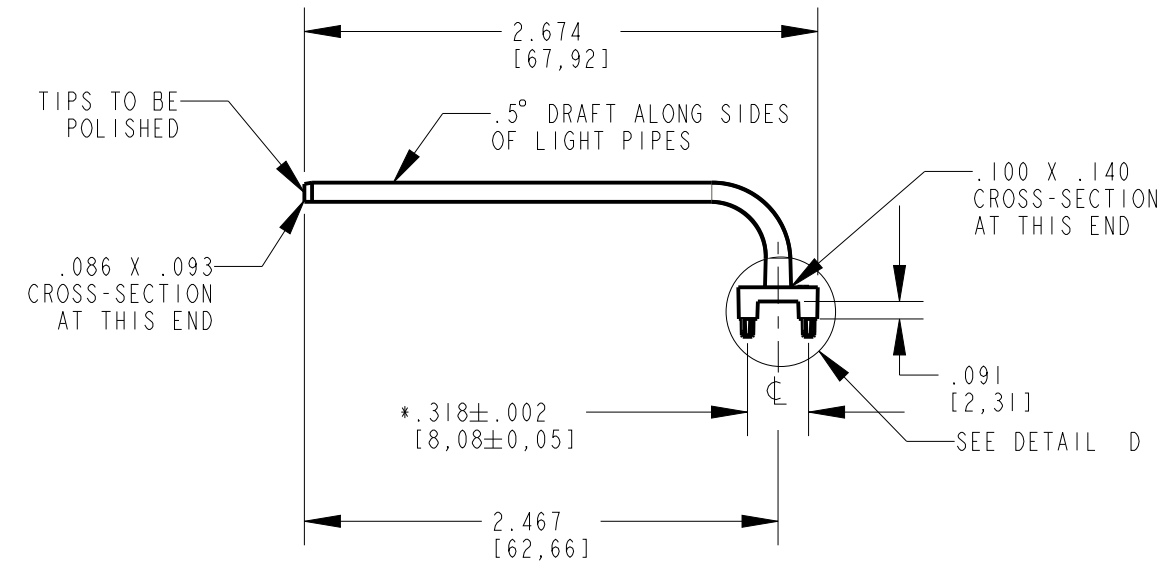
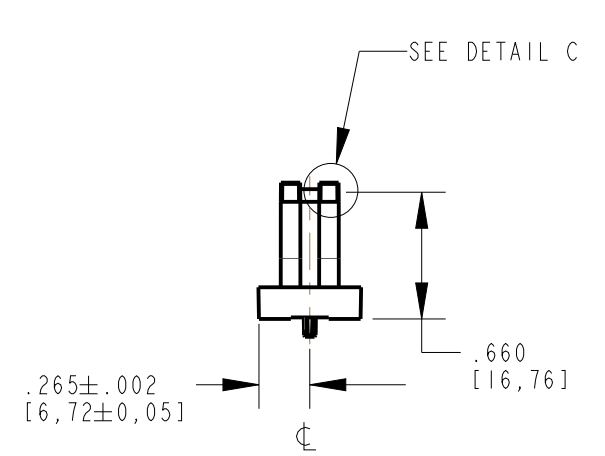


| REV | ECN NO | REVISIONS | DRN | CKD | APP | DATE |
|-----|--------|-------------|-----|-----|-----|---------|
| A | | NEW RELEASE | WFB | JTD | NO | 11-5-12 |



RoHS COMPLIANT 515-1200F

Part Numbers with the "F" suffix ending are RoHS Compliant. Packaging is marked with "RoHS Compliant" label or equivalent markings.

NOTES:

1. DIALIGHT PART NUMBER 515-1200F
2. UNLESS OTHERWISE SPECIFIED, ALL SURFACES MUST HAVE FINISH OF SPI A3 TO B1.
3. MATERIAL TO BE CLEAR, TRANSMISSABLE POLYCARBONATE (UL 94V-0 FLAMABILITY).
4. FLASH NOT TO EXCEED .005, SINK MARKS PERMISSIBLE ±.005.
5. UNLESS OTHERWISE SPECIFIED, .003" ROUNDS AND FILLETS PERMISSIBLE.
6. GATE VESTIGE TO BE .010" ABOVE OR BELOW SURFACE.
7. COMPONENTS DESIGNED TO BE PRESSED INTO PC BOARD.
8. UNLESS OTHERWISE SPECIFIED, 2 DEGREE DRAFT PERMISSIBLE.
9. * TOE-IN PERMISSIBLE BETWEEN LIMITS .310 TO .315

| | | |
|---|---|----------|
| THIS DRAWING AND THE CONTENTS HEREIN ARE CONFIDENTIAL AND THE SOLE PROPERTY OF DIALIGHT. REPRODUCTION OF THIS DRAWING OR CONSTRUCTION OF ANY PARTS WITHIN THIS DRAWING ARE FORBIDDEN WITHOUT THE WRITTEN CONSENT OF DIALIGHT. | | |
| SCALE: 1.000 ALL DIM'S IN: INCHES (MM) | DRAWING NUMBER C-17977 | REV A |
| TOLERANCES: UNLESS OTHERWISE SPECIFIED FRACTIONS: ±1/64 DECIMALS (.XX): ±.01 DECIMALS (.XXX): ±.005 | TITLE 2 ELEMENT LIGHTPIPE CANOGA 7512A5-1-AV0 | |
| ANGLES: ±3° FINISH: | MATERIAL | |
| FSCM 83330 | 1501 ROUTE 34 SOUTH FARMINGDALE, NJ 07727 | |
| SHEET 1 OF 1 FAMILY TABLE: | | |