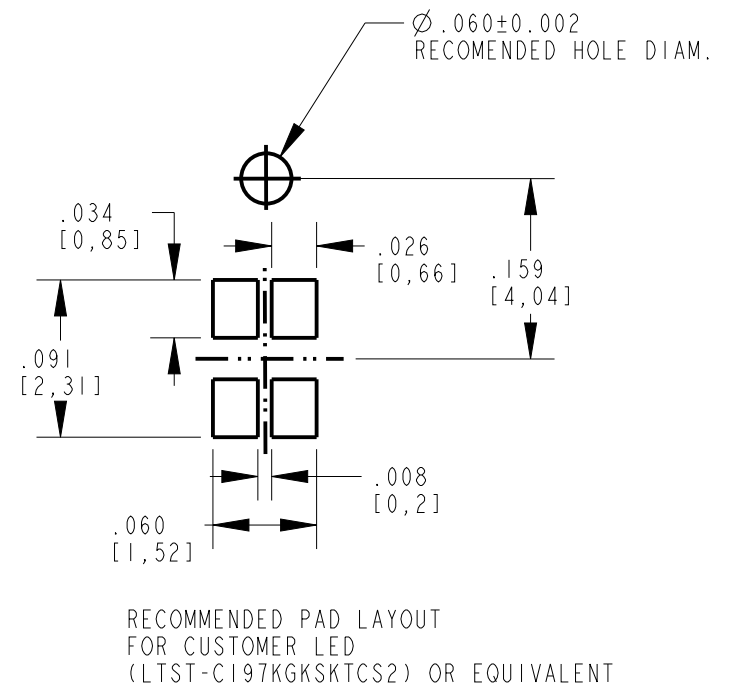
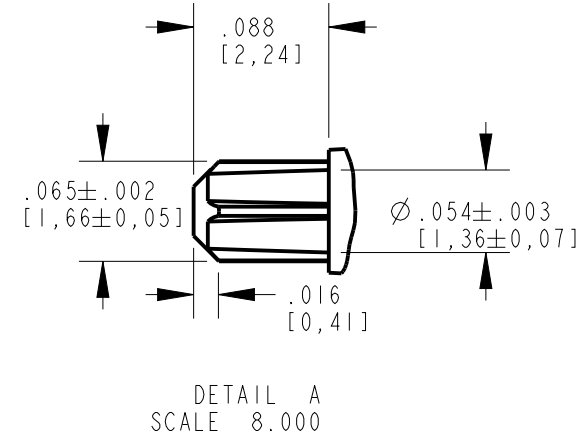
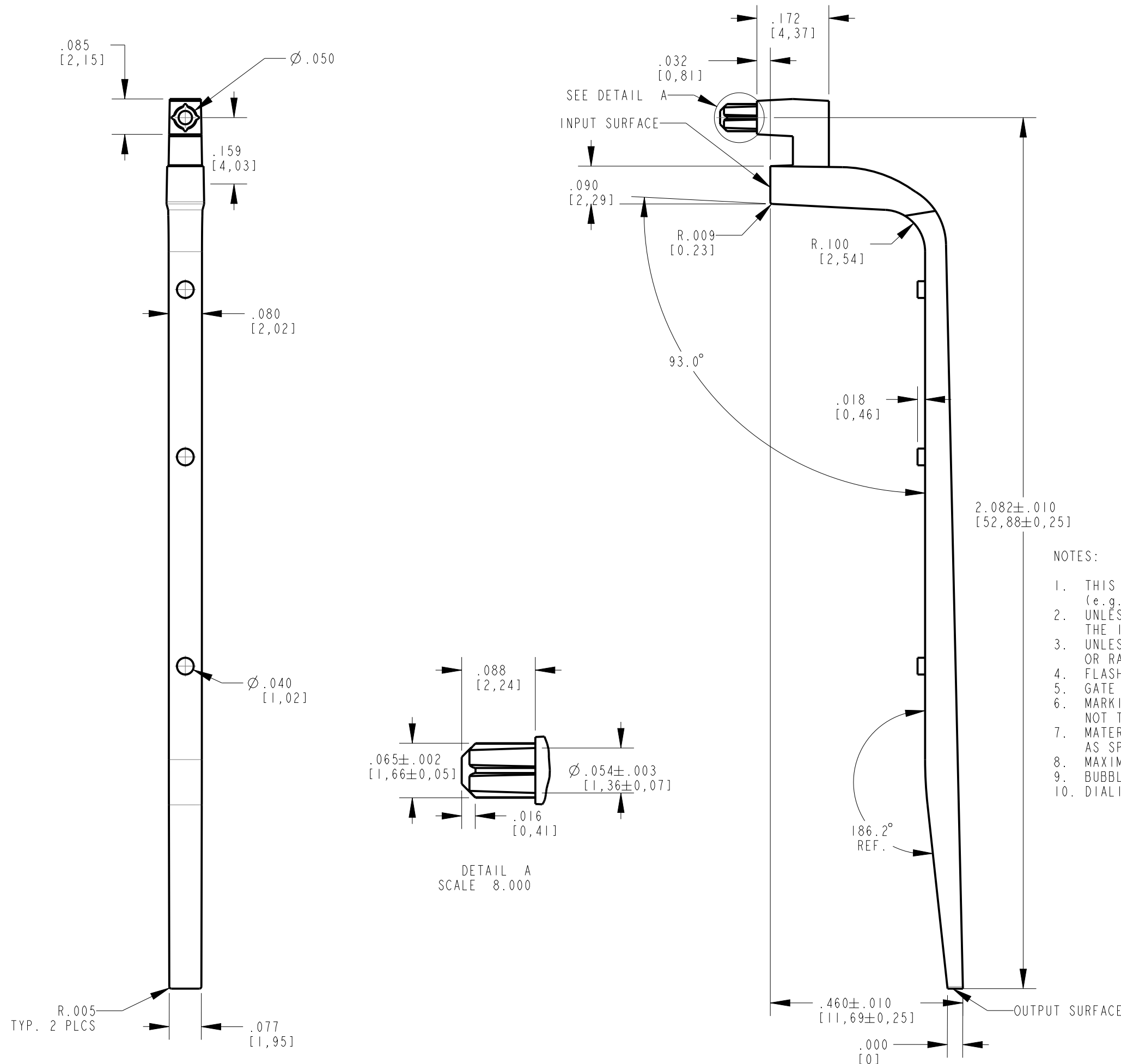


REV	ECN NO	REVISIONS	DRN	CKD	APP	DATE
A		NEW RELEASE	BP		NO	11-8-16



NOTES:

1. THIS DRAWING IS TO BE USED IN CONJUNCTION WITH DIALIGHT FURNISHED CAD MODEL (e.g. PRO/E FILE, IGES FILE, ETC.) FOR PART GEOMETRY AND DIMENSIONS NOT SHOWN.
2. UNLESS OTHERWISE SPECIFIED, ALL SURFACES MUST HAVE FINISH OF SPI A-2 OR BETTER. THE INPUT AND OUTPUT SURFACES MUST HAVE FINISH OF SPI A-3
3. UNLESS OTHERWISE SPECIFIED, KNOCKOUT MARKS NOT TO EXCEED .005" RECESSED OR RAISED.
4. FLASH NOT TO EXCEED .002" AND SINK MARKS  $\pm .005$ ".
5. GATE VESTIGE TO BE .010" ABOVE OR BELOW SURFACE.
6. MARKING FOR CAVITY IDENTIFICATION NOT TO EXCEED .003" RAISED OR LOWERED NOT TO EXCEED .005"
7. MATERIAL TO BE CLEAR POLYCARBONATE (9000-000-6407-04) OR EQUIVALENT. AS SPECIFIED BY DIALIGHT ENGINEERING DEPT.
8. MAXIMUM PERMISSIBLE MISMATCH IS .002"
9. BUBBLES, VOIDS, BLACK SPECS AS PER 01-356
10. DIALIGHT P/N 515-1176F.

THIS DRAWING AND THE CONTENTS HEREIN ARE CONFIDENTIAL AND THE SOLE PROPERTY OF DIALIGHT. REPRODUCTION OF THIS DRAWING OR CONSTRUCTION OF ANY PARTS WITHIN THIS DRAWING ARE FORBIDDEN WITHOUT THE WRITTEN CONSENT OF DIALIGHT.		
SCALE: 4.000 ALL DIM'S IN: INCHES (MM)	DRAWING NUMBER C-18297	REV A
TOLERANCES: UNLESS OTHERWISE SPECIFIED FRACTIONS: $\pm 1/64$ DECIMALS (.XX): $\pm .01$ DECIMALS (.XXX): $\pm .005$ DECIMALS (.XXXX): $\pm .0005$ ANGLES: $\pm 1^\circ$	TITLE ONE POSITION LIGHTPIPE	
FINISH:	MATERIAL	
FSCM 83330	Dialight 1501 ROUTE 34 SOUTH FARMINGDALE, NJ 07727	
SHEET 1 OF 1 FAMILY TABLE:		