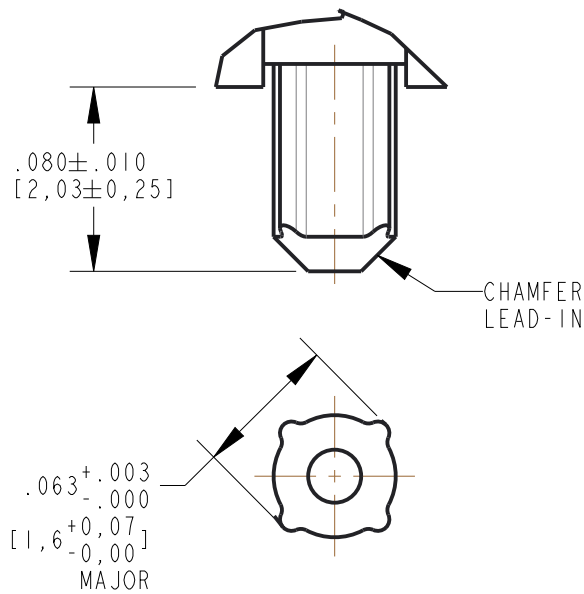
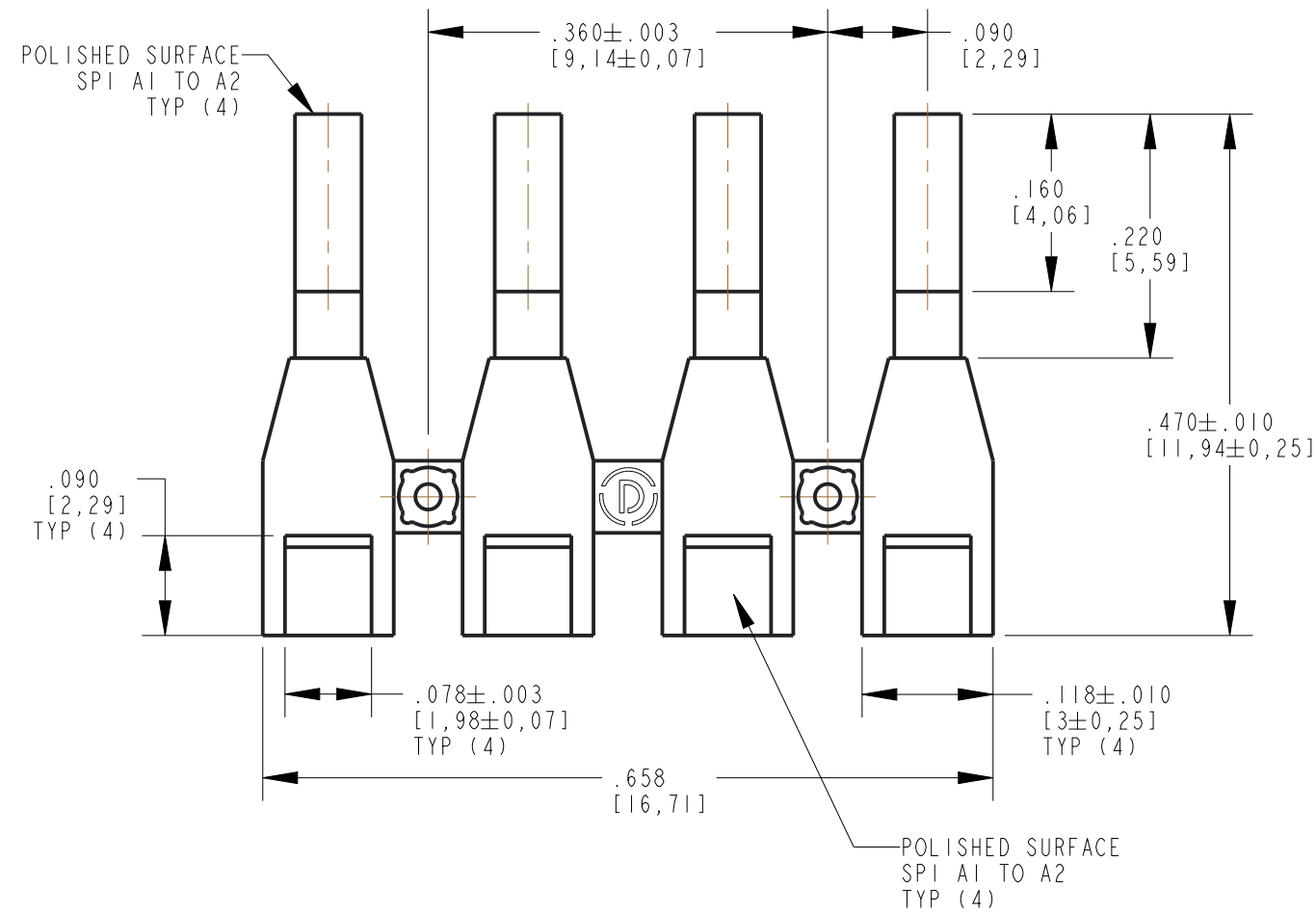
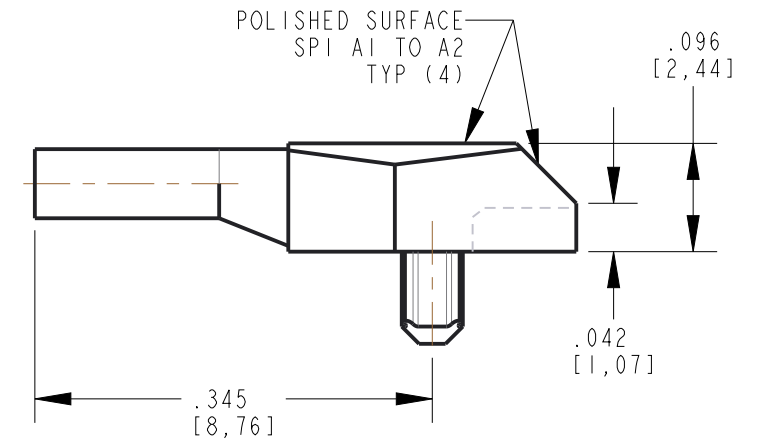
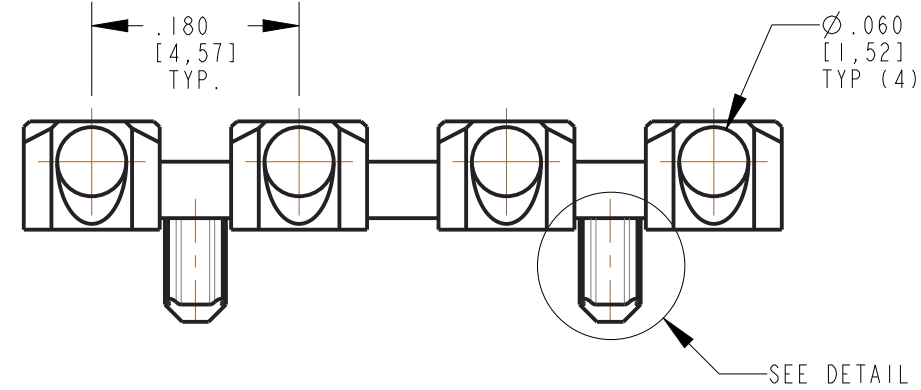


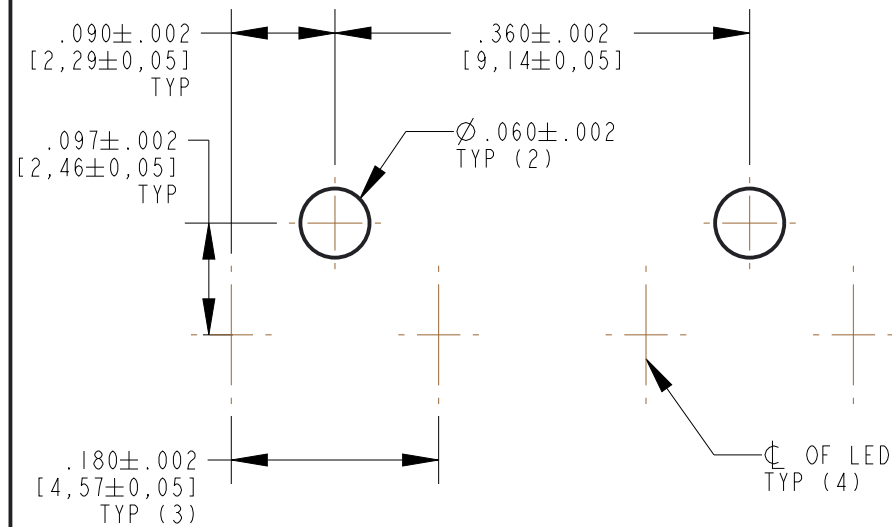
REV	ECN NO	REVISIONS	DRN	CKD	APP	DATE
A	102494	NEW RELEASE	LD	CS	NO	3-10-23

RoHS COMPLIANT 515-1167-802F

Part Numbers with the "F" suffix ending are RoHS Compliant. Packaging is marked with "RoHS Compliant" label or equivalent markings.



DETAIL A
SCALE 12.000




RECOMMENDED HOLE PATTERN

NOTES:

1. DIALIGHT PART NUMBER 515-1167-802F
2. COMPONENTS DESIGNED TO BE PRESSED INTO PC BOARD.
3. UNLESS OTHERWISE SPECIFIED, SURFACES TO HAVE A FINISH OF SPI A2 TO A3.
4. MATERIAL TO BE CLEAR, TRANSMISSIVE POLYCARBONATE (UL 94V-0 FLAMMABILITY).
5. STORAGE AND OPERATING TEMPERATURE -30 TO +100°C.

THIS DRAWING AND THE CONTENTS HEREIN ARE CONFIDENTIAL AND THE SOLE PROPERTY OF DIALIGHT CORP. REPRODUCTION OF THIS DRAWING OR CONSTRUCTION OF ANY PARTS WITHIN THIS DRAWING ARE FORBIDDEN WITHOUT THE WRITTEN CONSENT OF DIALIGHT CORP.

SCALE: 6.000	DRAWING NUMBER	REV
ALL DIM'S: INCH (mm)	C-17984	A
TOLERANCES: UNLESS OTHERWISE SPECIFIED	TITLE	
FRACTIONS: ±1/64 DECIMALS (.XX): ±.02 DECIMALS (.XXX): ±.015	4 ELEMENT LIGHTPIPE	
ANGLES: ±3°	MATERIAL	
FINISH	SEE NOTES	
FSCM 83330	 1501 ROUTE 34 SOUTH FARMINGDALE, NJ 07727 (732) 919-3119 www.dialight.com	
	SHEET 1 OF 1	FAMILY TABLE: