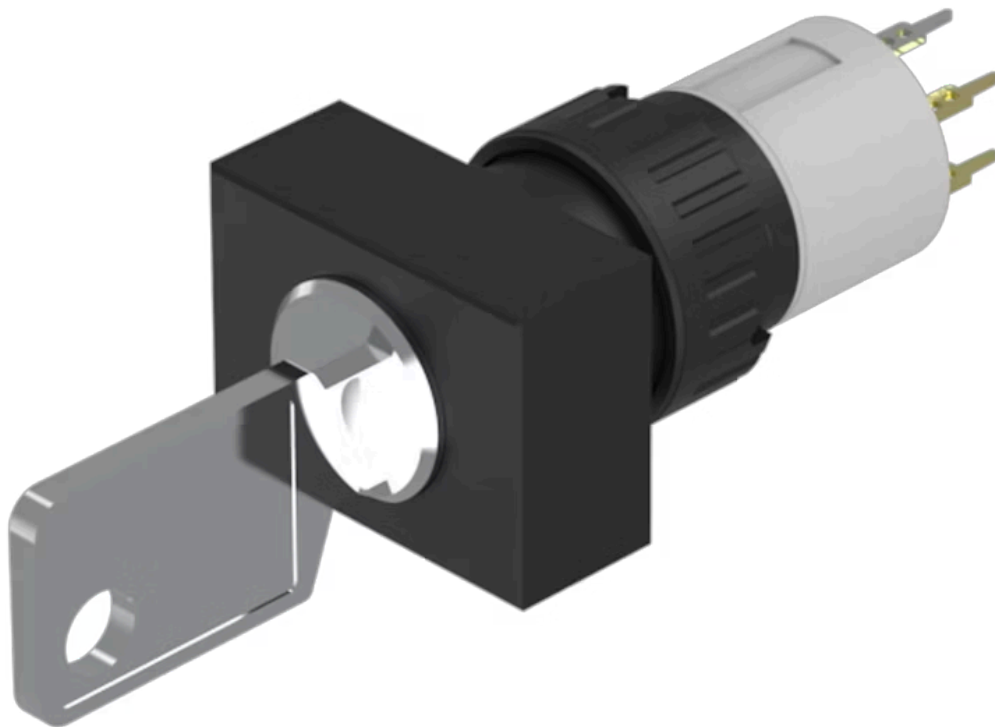


Actuator

51-
404.036DF



<https://eao.com/p/51-404.036DF>

Your product:



51-404.036DF Actuator

FRONT

Front dimension: 24 mm x 18 mm

MOUNTING

Mounting cut-out: 21 mm x 27 mm

Design: flush

ELECTRICAL CHARACTERISTICS

Switching voltage and switching current: 100 mA at 42 VAC/VDC

Electric strength: 2500 VAC, 50 Hz, 1 min. between all terminals and earth, according to IEC 61058-1, part 15

Standards: According to EN/IEC 61058-1

Contacts: 2 NO

Electrostatic discharge (ESD): ≤ 15 kV

MECHANICAL CHARACTERISTIC

Terminal: Universal terminal, 2 x 0.5 mm

Switching angle: 90° right

Switching action: Rest (a) - Maintained

Switching positions: 2 positions

Switching system: This low-level switching element was designed for switching low powers in electronic circuits. The mechanism assures reliable switching of loads ranging from a few $\mu\text{A}/\mu\text{V}$ up to 100 mA/ 42 VAC/DC. Single-break momentary contact, as normally open or normally closed with 4 independent points of contact. 2 momentary contacts per switching element; combination of normally open and normally closed is possible.

Special features are the long life, extremely short rebound time and stable contact resistance.

Contact material:	Gold
Weight:	0.016 kg
Switching system:	Low-level element
Tightening torque:	Fixing nut max. 0.5 Nm
Mechanical lifetime:	50 000 cycles of operation
Operating force:	1,8 ... 3,5 N

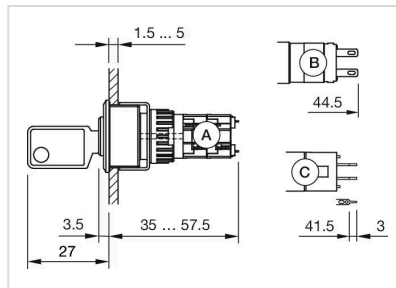
AMBIENT CONDITION

Storage temperature:	- 40 °C ... + 85 °C
Shock resistance:	15 g for 11 ms, as per DIN / EN 60512-4-3, DIN / EN 60068-2-27 (Single impacts, semi-sinusoidal)
IP front protection:	IP65, according to DIN EN 60529

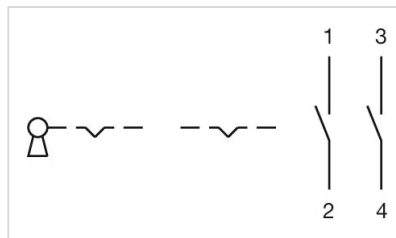
OTHER

Short Description:	Actuator, 21 mm x 27 mm, 24 mm x 18 mm, 2 NO, Rest (a) - Maintained, Universal terminal, 2 x 0.5 mm, IP65, according to DIN EN 60529
Hints:	Standard lock: DOM 311
Housing colour:	Black

Dimension drawings:



Wiring diagrams:



Switching positions:

