

Actuator

51-
121.022



<https://eao.com/p/51-121.022>

Your product:



51-121.022 Actuator

FRONT

Front bezel colour:	Black
Front dimension:	24 mm x 18 mm
Front bezel material:	Plastic

MOUNTING

Design:	raised
----------------	--------

OPERATING-/INDICATION PART

Lens illumination:	illuminative
---------------------------	--------------

ELECTRICAL CHARACTERISTICS

Protection class:	II
Standards:	According to EN/IEC 61058-1
Rated Operational Voltage Ue:	250 VAC/DC according to EN IEC 60947-1
Switching voltage and switching current:	250 VAC, 5 A (ohmic) 250 VAC, 3 A (Soldering terminal) 250 VAC, 2 A (inductive, $\cos(\phi) = 0.7$) 125 VAC, 3 A (inductive, $\cos(\phi) = 0.7$) 220 VDC, 0.1 A (inductive, L:R = 30 ms) 110 VDC, 0.2 A (inductive, L:R = 30 ms) 60 VDC, 0.7 A (inductive, L:R = 30 ms) 24 VDC, 2 A (inductive, L:R = 30 ms)
Thermal current Ith:	5 A, according to EN / IEC 60947-5-1 The maximum current in continuous operation and at ambient temperature not exceeding the quoted maximum values.
Electric strength:	2500 VAC, 50 Hz, 1 min. between all terminals and earth, according to IEC 61058-1, part 15
Contacts:	1 NC / 1 NO

Electrical lifetime: 50 000 cycles of operation

MECHANICAL CHARACTERISTIC

Tightening torque: Fixing nut max. 0.5 Nm

Operating Travel: 3 mm

Operating force: 1,8 ... 6 N

Wire cross section: Snap-action switching element with axial soldering terminals, which can also be used as plug-in terminals 2.8 x 0.5mm
Max. wire diameter 2 wires of 1 mm
Max. wire cross-section of stranded cable 2 of 0.75 mm² or 1 x 1.0 mm²

Switching system: Snap-action switching element

Mechanical lifetime: 2 Mio. cycles of operation

Weight: 0.006 kg

Switching action: Momentary

Contact material: Gold

Switching system: Self-cleaning, double-break snap action switching system, 1 normally closed and 1 normally open contact per element.

Terminal: Plug-in terminal, 2.8 x 0.5 mm

AMBIENT CONDITION

Storage temperature: - 40 °C ... + 85 °C

Shock resistance: 15 g for 11 ms, as per DIN / EN 60512-4-3, DIN / EN 60068-2-27 (Single impacts, semi-sinusoidal)

IP front protection: IP65, according to DIN EN 60529

Vibration resistance: 10 g at 10 Hz...1500 Hz, amplitude 0.75 mm (Sinusoidal), according to DIN EN 60512-4-4, DIN EN 60068-2-6

Climate resistance: Standard condition, as per DIN EN 60068-2-30
Changing condition, as per DIN EN 60068-2-14

Operating temperature: - 25 °C ... + 55 °C, mounted as a block, make sure the heat can escape freely

CERTIFICATE

Approbations: CB (IEC 61058-1), CQC, CSA, DNV, ENEC (EN 61058-1), UL

Conformities: CE, UKCA, 2011 / 65 / EC (RoHS), 2014 / 30 / EU (EMC), 2014 / 35 / EU (LVD)

OTHER

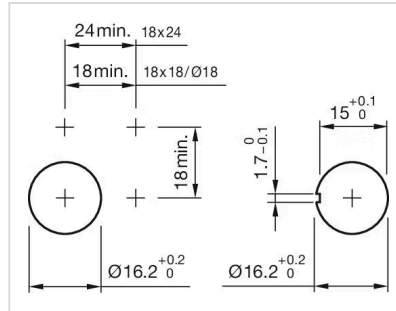
Internal size:

21,5 mm x 15,3 mm

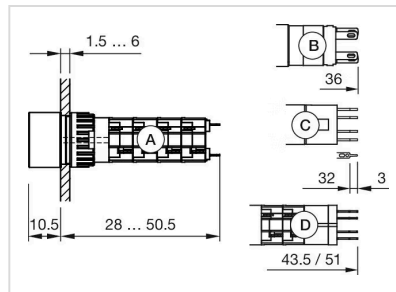
Housing colour: Black

Short Description: Actuator, 24 mm x 18 mm, illuminative, Black, Plastic, 1 NC / 1 NO, Momentary, Plug-in terminal, 2.8 x 0.5 mm, IP65, according to DIN EN 60529

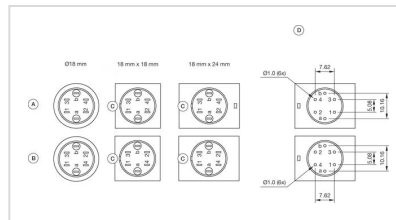
Mounting cut-outs:



Dimension drawings:



Component layouts:



Wiring diagrams:

