

**PLEASE CHECK WWW.MOLEX.COM FOR LATEST PART INFORMATION**

**Part Number:** **5025781406**  
**Status:** **Active**  
**Overview:** CLIK-Mate Wire-to-Board Connectors  
**Description:** 1.50mm Pitch, CLIK-Mate Plug Crimp Housing, Single Row, Positive Lock, 14 Circuits, Green

**Documents:**

<a href="#">3D Model</a>	<a href="#">Product Specification 5025781002-PS-000 (PDF)</a>
<a href="#">3D Model (PDF)</a>	<a href="#">Product Specification 5025781003-PS-000 (PDF)</a>
<a href="#">Drawing (PDF)</a>	<a href="#">Product Specification 5025781004-PS-000 (PDF)</a>
<a href="#">Product Specification 5025780000-PS-000 (PDF)</a>	<a href="#">Application Specification AS-502578-001-001 (PDF)</a>
<a href="#">Product Specification 5025780001-PS-000 (PDF)</a>	<a href="#">Application Specification AS-503395-001-001 (PDF)</a>
<a href="#">Product Specification 5025780002-PS-000 (PDF)</a>	<a href="#">Packaging Specification SPK-502578-001-001 (PDF)</a>
<a href="#">Product Specification 5025780003-PS-000 (PDF)</a>	<a href="#">RoHS Certificate of Compliance (PDF)</a>
<a href="#">Product Specification 5025781000-PS-000 (PDF)</a>	

**General**

Product Family	Crimp Housings
Series	<u>502578</u>
Application	Signal, Wire-to-Board
Overview	<u>CLIK-Mate Wire-to-Board Connectors</u>
Product Name	CLIK-Mate
UPC	800756701189

**Physical**

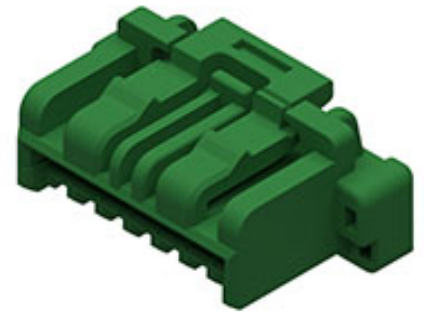
Circuits (maximum)	14
Color - Resin	Green
Gender	Plug
Glow-Wire Capable	No
Keying to Mating Part	None
Lock to Mating Part	Yes
Material - Resin	PBT
Net Weight	583.200/mg
Number of Rows	1
Packaging Type	Bag
Panel Mount	No
Pitch - Mating Interface	1.50mm
Pitch - Termination Interface	1.50mm
Polarized to Mating Part	Yes
Stackable	No
Temperature Range - Operating	-40° to +105°C

**Material Info**

Cross-Plant Material Status	LT
-----------------------------	----

**Reference - Drawing Numbers**

Application Specification	AS-502578-001-001, AS-503395-001-001
Packaging Specification	SPK-502578-001-001
Product Specification	5025780000-PS-000, 5025780001-PS-000, 5025780002-PS-000, 5025780003-PS-000, 5025781000-PS-000, 5025781002-PS-000, 5025781003-PS-000, 5025781004-PS-000
Sales Drawing	5025780000-SD-000



*Series image - Reference only*

**EU ELV**

**Not Relevant**

**EU RoHS**

**Compliant**

**REACH SVHC**

Not Contained Per -  
D(2020)4578-DC (25  
June 2020)

**Halogen-Free**

**Status**

**Not Low-Halogen**

For more information, please visit [Contact US](#)

China ROHS

ELV

RoHS Phthalates

**China RoHS**

Green Image

Not Relevant

Not Contained

**Search Parts in this Series**

502578 Series

**Mates With**

CLIK-Mate Bottom-Entry Receptacle 503395  
. CLIK-Mate Right Angle Receptacles  
503175 , 502585 , 213226 <br> CLIK-Mate  
Vertical Receptacles 503159 , 502584 ,  
505405 , 213225

**Use With**

CLIK-Mate Tin Terminals 502579 , 503429  
<br> CLIK-Mate Gold Terminals 213028 ,  
213029 <br> CLIK-Mate Pre-Crimped Lead  
797581011 , 215710 , 215711

**PLEASE CHECK [WWW.MOLEX.COM](http://WWW.MOLEX.COM) FOR LATEST PART INFORMATION**