

PLEASE CHECK WWW.MOLEX.COM FOR LATEST PART INFORMATION

Part Number: **5025781306**
Status: **Active**
Overview: CLIK-Mate Wire-to-Board Connectors
Description: 1.50mm Pitch, CLIK-Mate Plug Crimp Housing, Single Row, Positive Lock, 13 Circuits, Green

Documents:

3D Model	Product Specification 5025781002-PS-000 (PDF)
3D Model (PDF)	Product Specification 5025781003-PS-000 (PDF)
Drawing (PDF)	Product Specification 5025781004-PS-000 (PDF)
Product Specification 5025780000-PS-000 (PDF)	Application Specification AS-502578-001-001 (PDF)
Product Specification 5025780001-PS-000 (PDF)	Application Specification AS-503395-001-001 (PDF)
Product Specification 5025780002-PS-000 (PDF)	Packaging Specification SPK-502578-001-001 (PDF)
Product Specification 5025780003-PS-000 (PDF)	RoHS Certificate of Compliance (PDF)
Product Specification 5025781000-PS-000 (PDF)	

General

Product Family	Crimp Housings
Series	<u>502578</u>
Application	Signal, Wire-to-Board
Overview	<u>CLIK-Mate Wire-to-Board Connectors</u>
Product Name	CLIK-Mate
UPC	800756701080

Physical

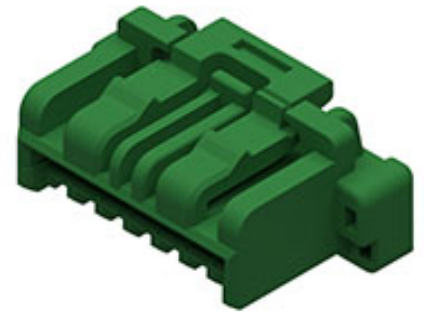
Circuits (maximum)	13
Color - Resin	Green
Gender	Plug
Glow-Wire Capable	No
Keying to Mating Part	None
Lock to Mating Part	Yes
Material - Resin	PBT
Net Weight	553.200/mg
Number of Rows	1
Packaging Type	Bag
Panel Mount	No
Pitch - Mating Interface	1.50mm
Pitch - Termination Interface	1.50mm
Polarized to Mating Part	Yes
Stackable	No
Temperature Range - Operating	-40° to +105°C

Material Info

Cross-Plant Material Status	LT
-----------------------------	----

Reference - Drawing Numbers

Application Specification	AS-502578-001-001, AS-503395-001-001
Packaging Specification	SPK-502578-001-001
Product Specification	5025780000-PS-000, 5025780001-PS-000, 5025780002-PS-000, 5025780003-PS-000, 5025781000-PS-000, 5025781002-PS-000, 5025781003-PS-000, 5025781004-PS-000
Sales Drawing	5025780000-SD-000



Series image - Reference only

EU ELV

Not Relevant

EU RoHS

Compliant

REACH SVHC

Not Contained Per -
D(2020)4578-DC (25
June 2020)

Halogen-Free

Status

Not Low-Halogen

For more information, please visit [Contact US](#)

China ROHS

ELV

RoHS Phthalates

China RoHS

Green Image

Not Relevant

Not Contained

Search Parts in this Series

502578 Series

Mates With

CLIK-Mate Bottom-Entry Receptacle 503395
. CLIK-Mate Right Angle Receptacles
503175 , 502585 , 213226
 CLIK-Mate
Vertical Receptacles 503159 , 502584 ,
505405 , 213225

Use With

CLIK-Mate Tin Terminals 502579 , 503429

 CLIK-Mate Gold Terminals 213028 ,
213029
 CLIK-Mate Pre-Crimped Lead
797581011 , 215710 , 215711

PLEASE CHECK WWW.MOLEX.COM FOR LATEST PART INFORMATION