

PLEASE CHECK WWW.MOLEX.COM FOR LATEST PART INFORMATION

Part Number: [5013300834](#)
Status: **Active**
Overview: [Pico-Clasp Wire-to-Board Connectors](#)
Description: 1.00mm Pitch, Pico-Clasp Receptacle Crimp Housing, Single Row, Positive Lock, 8 Circuits, Blue

Documents:

Drawing (PDF)	Application Specification 5013300000-AS-000 (PDF)
Product Specification 5013300000-PS-001 (PDF)	Packaging Specification SPK-501330-001-001 (PDF)
Product Specification 5013301000-PS-001 (PDF)	RoHS Certificate of Compliance (PDF)

Application tooling part link

Application Tooling Part Link 63813-1700

General

Product Family	Crimp Housings
Series	501330
Application	Signal, Wire-to-Board
Overview	Pico-Clasp Wire-to-Board Connectors
Product Name	Pico-Clasp
UPC	800756912714

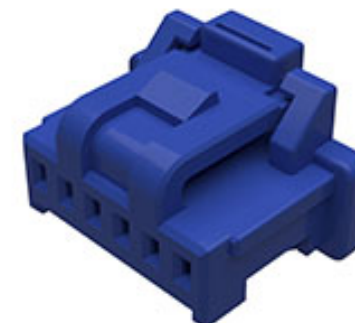
Physical

Circuits (maximum)	8
Color - Resin	Blue
Gender	Receptacle
Glow-Wire Capable	No
Keying to Mating Part	None
Lock to Mating Part	Yes
Material - Resin	Nylon
Net Weight	75.500/mg
Number of Rows	1
Packaging Type	Bag
Panel Mount	No
Pitch - Mating Interface	1.00mm
Pitch - Termination Interface	1.00mm
Polarized to Mating Part	Yes
Stackable	No
Temperature Range - Operating	-40° to +105°C

Material Info

Reference - Drawing Numbers

Application Specification	5013300000-AS-000
Packaging Specification	SPK-501330-001-001
Product Specification	5013300000-PS-001, 5013301000-PS-001
Sales Drawing	SD-501330-002-001



Series image - Reference only

EU ELV

Not Relevant

EU RoHS

Compliant

REACH SVHC

Not Contained Per -
D(2020)4578-DC (25
June 2020)

Halogen-Free

Status

Low-Halogen

For more information, please visit [Contact US](#)

China ROHS

ELV

RoHS Phthalates

China RoHS

Green Image

Not Relevant

Not Contained

Search Parts in this Series

[501330](#) Series

Mates With

[501331](#) , [203556](#) , [203557](#) Vertical PCB Header
Link:[501568](#) , [203558](#) , [203559](#)
Right Angle PCB Header

Use With

[501334](#) Tin Crimp Terminal
[501193](#) Gold Crimp Terminal

Application Tooling | FAQ

Tooling specifications and manuals are found by selecting the products below. Crimp Height Specifications are then contained in the Application Tooling Specification document.

Global

Description	Product #
Extraction Tool	638131700

PLEASE CHECK WWW.MOLEX.COM FOR LATEST PART INFORMATION