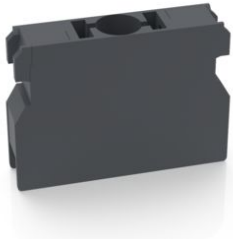


# RAFIX 22 QR, lamp socket, screw terminal, without coupling, for BA9s



## fields of application

- › Measurement-control-regulation
- › Electrical engineering
- › Mechanical and system engineering
- › Vehicle construction

## special features

- › Lamp socket BA 9s with screw connection
- › Illumination by socketed LEDs or incandescent lamps
- › Recommendation for clear colors with LEDs: LED color = aperture color
- › Mounting by snapping on (on coupling) and actuator / light attachment
- › Mounting always at the middle coupling position
- › The connections are open, wiring can start immediately
- › The screws are captively fixed in the clamping position
- › Time and material savings due to omission of wire end ferrules for stranded wires
- › Rigid wires and stranded wires can be used
- › Less wiring effort by inserting the cables from the rear, as no bending of the wires is necessary.
- › Disassembly by loosening the bayonet lever of the coupling



## description

RAFIX control units are modular units consisting of several parts. In the RAFIX 22 QR family, they always consist of an actuating element, coupling, and switching element, or of a light attachment, coupling, and lamp socket. For assembly, the switching elements and lamp holders are first snapped into the coupling. Then this unit is snapped onto the actuating element or the signal lamp. To release, a bayonet lever must be actuated.

For illuminable actuators and indicator lights, please use a lamp socket / LED element as the middle element in the coupling.

Switching elements marked in different colors prevent confusion in the bearing and when connecting:

- › 1/2 NC contacts = 1/2 red side cover
- › 1/2 normally open contacts = 1/2 green side covers
- › 1 NC and 1 NO contact = 1 red and 1 green side cover
- › Silver contacts = housing base color black
- › Gold contacts = housing base color gray
- › Lamp socket and LED element = completely black
- › The connections belonging to a pair of contacts are marked in color on the connection side and provided with contact identification numbers: 1-2 = NC contact, 3-4 = NO contact

## technical data

### › general

Color	light gray
Operating temperature, min.	-25 °C
Operating temperature, max.	70 °C
Storage temperature, min.	-40 °C
Storage temperature, max.	80 °C
illuminated	Yes
Lamp socket	BA9s
Packaging unit	5 pcs.
net weight	12 g
Environment resistance	IEC 60068-2-14 IEC 60068-2-30 IEC 60068-2-33 IEC 60068-2-78
Shock resistance according to standard IEC 60068-2-27	50 g at 11 ms amplitude semi-sinusoidal
Vibration resistance according to standard IEC 60068-2-6	10 g at 40 - 500 Hz
MOQ order	10 pcs.
RoHS compliant	Yes
REACH compliant	Yes

### direct links

- › [RAFI eCatalog](#)

### › mounting diameters

The information in this data sheet only contains general descriptions and / or performance features, which may not apply precisely as described to the respective application, and which may change due to further product enhancements. The technical data, illustrations and other information about our products are the mere results of individual technical testing. These descriptions and other product features are only binding if they expressly agreed upon at the time of the conclusion of a binding contract. In all other cases, we reserve the right to make technical changes as well as changes of availability. Pictures and other graphic illustrations are approximations only. All product names may be trademarks or brand names of the RAFI Group or any other sub-supplier of RAFI. The use of such by any third parties for their own purposes may infringe the rights of the respective entity holding those rights.

date: Nov 14, 2024 page: 2/4

### RAFI GmbH & Co. KG

Ravensburger Str. 128-134  
88276 Berg / Ravensburg  
Germany  
[www.rafi-group.com](http://www.rafi-group.com),  
[info.headquarters@rafi-group.com](mailto:info.headquarters@rafi-group.com)

Outside dimension, length	49.9 mm
Outside dimension, width	39.5 mm
Outside dimension, height	30 mm
Mounting depth	56.4 mm

**> mechanical data**

Fixing	Latching
Terminal on the rear	Screw terminal
Abisolierlänge	9 mm

**> electrical data**

Operating voltage of the luminous element, min.	6 V
Operating voltage of the luminous element, max.	250 V

**drawings**

**Dimensioned drawing**

