



Part Number : [1731071111](#)

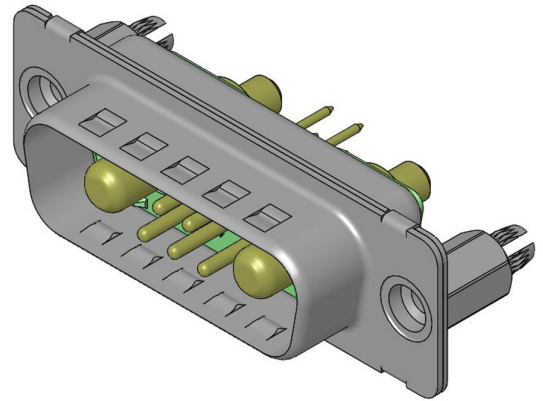
Product Description : FCT Mixed Layout D-Sub Connector, Male, Straight, PCB Through Hole, Gold Plating, Tin-plated Shell with Dimples, 6.60mm Snap-in Bolt, Guide Pin, 36 Circuits Max, 3 High Power and 32 Signal Contacts Loaded, Green Insulator

Series Number : 173107

Status : Active

Product Category : D-Sub Connectors

Engineering Number : FM36W4P1-5817




Documents & Resources

Drawings

[1731071000_sd.pdf](#)

Product Environment Compliance

Compliance

GADSL/IMDS	Not Relevant
China RoHS	
EU ELV	Not Relevant
Low-Halogen Status	Not Reviewed per IEC 61249-2-21
REACH SVHC	Contains Lead per D(2023)3788-DC (14 Jun 2023)
EU RoHS	Compliant with Exemption 6(c) per EU 2015/863

Multiple Part Product Compliance Statements

- Eu RoHS
- REACH SVHC
- Low-Halogen

Multiple Part Industry Compliance Documents

- IPC 1752A Class C
- IPC 1752A Class D
- Molex Product Compliance Declaration
- IEC-62474

Part Details

General

Status	Active
Category	D-Sub Connectors
Series	173107
Description	FCT Mixed Layout D-Sub Connector, Male, Straight, PCB Through Hole, Gold Plating, Tin-plated Shell with Dimples, 6.60mm Snap-in Bolt, Guide Pin, 36 Circuits Max, 3 High Power and 32 Signal Contacts Loaded, Green Insulator
IP Rating	IP20
Magnetic	Yes
Product Name	FCT Products
Type	Mixed Layout
UPC	191130104772

Electrical

Current - Maximum per Contact	7.5A, 20.0A
Shielded	Yes

Physical

Circuits (Loaded)	35
Circuits (maximum)	36
Color - Resin	Green
Durability (mating cycles max)	500
Gender	Male
Material - Contact	Copper Alloy
Material - Resin	PBT
Material - Shell	Steel
Net Weight	24.900/g
Number of Rows	3
Orientation	Straight

Packaging Type	Carton
Panel Mount	Rear
Panel Mount Method	Thread-In
PC Tail Length	10.30mm
PCB Locator	Yes
PCB Retention	Yes
PCB Thickness - Recommended	1.60mm
Pitch - Mating Interface	2.84mm
Pitch - Termination Interface	2.54mm
Plating - Contact	Gold over Nickel Gold/Tin over Nickel
Plating min - Mating	0.800µm
Plating min - Termination	0.800µm, 5.000µm
Plating - Shell	Tin
Polarized to Mating Part	Yes
Polarized to PCB	Yes
Ports	1
Temperature Range - Operating	-55° to +130°C
Termination Style	Through Hole
Waterproof / Dustproof	No
Waterproof / Dustproof Type	IP20

Mates With / Use With

Mates with Part(s)

Description	Part Number
Mates With	FCT Mixed Layout D-Sub, Size 5, 36W4, Socket