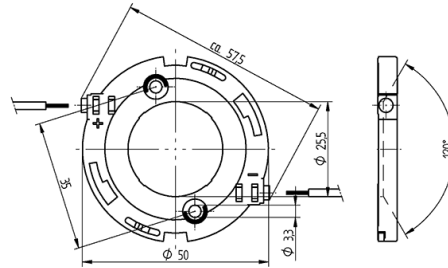
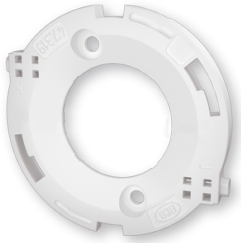


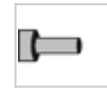


Technology for Light

COB connector \varnothing 50 mm for LED array 28 x 28 mm 47.319.2033.50



0,75 mm²



0,75 mm²



COB connector Ø 50 mm for LED array 28 x 28 mm 47.319.2033.50

Technology for Light

DESCRIPTION

With integrated reflector interface
Screw mounting: for screws M3 and locking washer
Max. torque for screw fixing 0.5 Nm*
Strip length: 7-1 mm
Polarity of LED must be observed
Specifications of LED manufacturer must be observed
cURus: For limited applications
VDE-Reg. No. E289
*Please note the max torque of the COB manufacturer

Mounting method 1:	Screw mount
LED manufacturer:	GLBTECH, iLED, Lextar, Bridgelux, Citizen, Edison, Itswell, Luminus, Prolight Opto, Samsung, Seoul Semiconductor, Sunpu, LG Innotek
LED Typ:	PB38V03, PB40H02, SAW x2296A, LC040D / 60D / 80D, CL-U730 / CL-U731, CL-U044/U046/U048, V22, CLM-22 / CXM-22, PB38U02, CHM-14, PB30U03, PB20U02, PB40U03, PACG 110, SAW x229AAA, SP22N-4090, 37W L-COB G2, GME2821, Opto 40W, G7, LEMWM28-40W, PB20H01, ZC25/40/60, COB-Q series, CL-L040/042, SAW x2298A, PB38H01
Prefixation of COB:	Yes
Conductor cross-section:	0.75 mm
Weight:	5
Approval:	cURus
Material:	Housing: PBT Contacts: CuSn
cULus file no.:	E-345385
Mounting method 2:	P2F fixing with 28.902.-102
Pkg.:	504
Rating:	3A / 150 VDC
Product name:	COB connector Ø 50 mm for LED array 28 x 28 mm

Suitable for the following LED models:

LED Manufacturer	LED Type	More Information
Samsung	LC040D / 60D / 80D	http://www.samsung.com
Luminus	CLM-22 / CXM-22	http://www.luminus.com
GLBTECH	GME2821	http://www.high-cri-led.com
iLED	SP22N-4090	http://www.iledm.com
Sunpu	G7	http://www.sunpuled.com
LG Innotek	LEMWM28-40W	http://ledlighting.lginnotek.com
Seoul Semiconductor	ZC25/40/60	http://www.seoulsemicon.com
Lextar	PB20H01	http://www.lextar.com
Edison	Opto 40W	http://www.edison-opto.com.tw
Citizen	CL-U044/U046/U048	http://ce.citizen.co.jp
Itswell	COB-Q series	http://www.itswell.com



Technology for Light

COB connector Ø 50 mm for LED array 28 x 28 mm 47.319.2033.50

Citizen	CL-U730 / CL-U731	http://ce.citizen.co.jp
Prolight Opto	PACG 110	http://www.prolightopto.com
Citizen	CL-L040/042	http://ce.citizen.co.jp
Lextar	PB38H01	http://www.lextar.com
Lextar	PB30U03	http://www.lextar.com
Lextar	PB20U02	http://www.lextar.com
Lextar	PB40U03	http://www.lextar.com
Lextar	PB40H02	http://www.lextar.com
Bridgelux	V22	http://www.bridgelux.com
Seoul Semiconductor	SAW x2296A	http://www.seoulsemicon.com
Luminus	CHM-14	http://www.luminus.com
LG Innotek	37W L-COB G2	http://ledlighting.lginnotek.com
Lextar	PB38U02	http://www.lextar.com
Lextar	PB38V03	http://www.lextar.com
Seoul Semiconductor	SAW x229AAA	http://www.seoulsemicon.com
Seoul Semiconductor	SAW x2298A	http://www.seoulsemicon.com