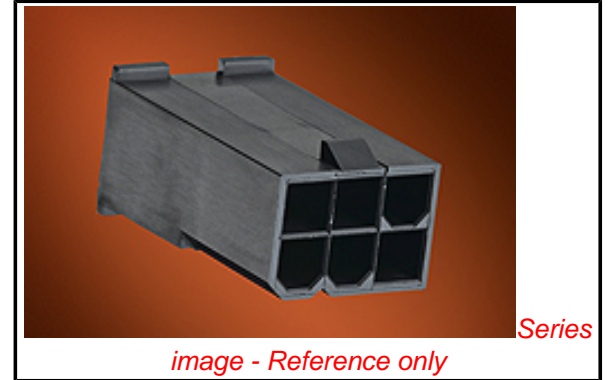


PLEASE CHECK WWW.MOLEX.COM FOR LATEST PART INFORMATION

Part Number: [46993-0410](#)
Status: **Active**
Overview: [Mini-Fit Jr.™ Power Connectors](#)
Description: Mini-Fit Jr.™ Plug Housing, Dual Row with Panel Mount Ears, PA Polyamide Nylon 6/6, UL 94V-2, Panel Mount, 4 Circuits, Glow Wire Compatible

Documents:

| | |
|---|---|
| Drawing (PDF) | Packaging Specification PK-5559-001 (PDF) |
| Product Specification PS-45750-001 (PDF) | Test Summary TS-5556-002 (PDF) |
| Product Specification PS-5556-001 (PDF) | RoHS Certificate of Compliance (PDF) |
| Packaging Specification PK-5557-003 (PDF) | |



Agency Certification

| | |
|-----|---------|
| CSA | LR19980 |
| UL | E29179 |

General

| | |
|----------------|--|
| Product Family | Crimp Housings |
| Series | 46993 |
| Application | Power, Wire-to-Board, Wire-to-Wire |
| Overview | Mini-Fit Jr.™ Power Connectors |
| Product Name | Mini-Fit Jr.™ |
| UPC | 887191638782 |

Physical

| | |
|-------------------------------|-----------------|
| Circuits (maximum) | 4 |
| Color - Resin | Black |
| Flammability | 94V-2 |
| Gender | Plug |
| Glow-Wire Compliant | Yes |
| Keying to Mating Part | None |
| Lock to Mating Part | Yes |
| Material - Resin | Nylon |
| Net Weight | 1.985/g |
| Number of Rows | 2 |
| Packaging Type | Bag |
| Panel Mount | No |
| Pitch - Mating Interface | 4.20mm |
| Pitch - Termination Interface | 4.20mm |
| Polarized to Mating Part | Yes |
| Ports | 1 |
| Stackable | No |
| Temperature Range - Operating | -40°C to +105°C |


Electrical

| | |
|-------------------------------|-----|
| Current - Maximum per Contact | 13A |
|-------------------------------|-----|

Material Info

Reference - Drawing Numbers

| | |
|-------------------------|---------------------------|
| Packaging Specification | PK-5557-003, PK-5559-001 |
| Product Specification | PS-45750-001, PS-5556-001 |
| Sales Drawing | SD-46993-0000 |
| Test Summary | TS-5556-002 |

| | |
|---|--|
| EU RoHS ELV and RoHS Compliant REACH SVHC Contains SVHC: No Low-Halogen Status Not Low-Halogen | China RoHS  |
|---|--|

Need more information on product environmental compliance?

Email productcompliance@molex.com
 For a multiple part number RoHS Certificate of Compliance, [click here](#)

Please visit the [Contact Us](#) section for any non-product compliance questions.

Search Parts in this Series

[46993Series](#)

Mates With

[46992](#) Receptacle Housing

Use With

[5558](#) Male Terminal

This document was generated on 12/17/2014

PLEASE CHECK WWW.MOLEX.COM FOR LATEST PART INFORMATION