

PLEASE CHECK WWW.MOLEX.COM FOR LATEST PART INFORMATION

Part Number: [0465629322](#)
Status: **Active**
Overview: EXTreme Ten60 High-Power Connectors
Description: EXTreme Ten60Power Vertical Receptacle with Side Guides, 2 DC Power Circuits, 15 Signal Circuits, 2 DC Power Circuits, Press Fit Tail

Documents:

Drawing (PDF)	Test Summary 464361000-TS-000 (PDF)
Product Specification PS-46436-100-001 (PDF)	Datasheet (PDF)
Packaging Specification 465621001-PK-000 (PDF)	RoHS Certificate of Compliance (PDF)

General

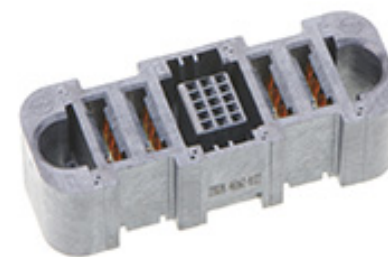
Product Family	PCB Receptacles
Series	46562
Application	Board-to-Board, Power, Signal
Comments	See Product Specification for details
Overview	EXTreme Ten60 High-Power Connectors
Product Name	EXTreme Ten60Power
UPC	195842673106

Physical

(p)ower-(s)ignal Configuration	2p - 15s - 2p
Circuits (Loaded)	19
Circuits (maximum)	19
Color - Resin	Black
Durability (mating cycles max)	200
Glow-Wire Capable	No
Guide to Mating Part	Side, Yes
Keying to Mating Part	None
Lock to Mating Part	No
Material - Metal	High Conductivity Copper
Material - Plating Mating	Gold
Material - Plating Termination	Tin
Material - Resin	Liquid Crystal Polymer
Net Weight	14.066/g
Number of Rows	1, 5
Orientation	Vertical
PC Tail Length	2.50mm, 3.28mm
PCB Locator	No
PCB Retention	Yes
PCB Thickness - Recommended	1.58mm
Packaging Type	Tray
Pitch - Mating Interface	2.00mm, 5.50mm
Plating min - Mating	0.762µm
Plating min - Termination	2.540µm
Polarized to Mating Part	Yes
Polarized to PCB	Yes
Stackable	No
Surface Mount Compatible (SMC)	No
Temperature Range - Operating	-40° to +105°C
Termination Interface: Style	Through Hole - Compliant Pin

Electrical

Current - Maximum per Contact	60.0A
Grounding to PCB	No
Voltage - Maximum	600V AC / 250V DC



Series image - Reference only

EU ELV

Not Relevant

EU RoHS

Compliant

REACH SVHC

Not Contained Per -
D(2021)10043-DC (17
Jan 2022)

Halogen-Free

Status

Low-Halogen

For more information, please visit [Contact US](#)

China ROHS

ELV

RoHS Phthalates

China RoHS

Green Image

Not Relevant

Not Contained

Search Parts in this Series

[46562 Series](#)

Mates With

[EXTreme Ten60Power Right-Angle Plug
464379322](#)

Material Info

Reference - Drawing Numbers

Packaging Specification	465621001-PK-000
Product Specification	PS-46436-100-001
Sales Drawing	465629330-000
Test Summary	464361000-TS-000

This document was generated on 05/27/2022

PLEASE CHECK WWW.MOLEX.COM FOR LATEST PART INFORMATION