



[All Series](#) > [Series 45](#) > Part No. 45-1131.3110.000.401

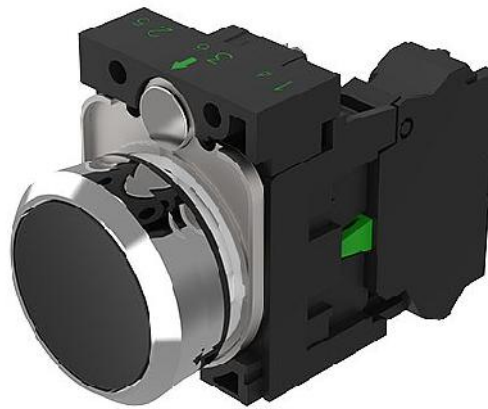
Part No. 45-1131.3110.000.401, Pushbutton

[Request Information](#)

[Printable Page](#)

[Download PDF](#)

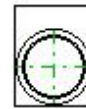
[Email This Page](#)



[3D CAD DRAWING](#)

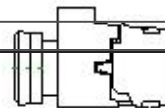


[3D](#)



[Front View](#)

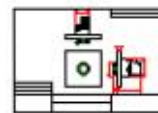
45-1131.3110.000.401



[2D Right Side View](#)



[2D Top View](#)



[2D Sales Drawing](#)

[Specifications](#) | [Bill of Materials](#)

Specifications

Actuator	Pushbutton
Lens Colour	Black

Function	2 Positions, momentary (O<l)
Housing Material	Metal/Plastic
Shape of Handle or Frontring	raised/ level to bezel
Lock System	None
Key	None
Key Type	None
Switching Angle	None
Contacts	1NO
Terminal	Spring-loaded terminal
Voltage Illumination	None
Mounting Type	Front mounting
Mounting Style	Holder
Environmental Rating	IP66, IP67, IP69K
Industry Standards/Certifications	UL, CSA, VDE, CCC, CE, RoHS
Switching Function	On-Off
Illumination	None
Contact Material	Silver
Termination Style	Spring type
Mechanical Life	Maintain 500'000 switching cycles Momentary 10'000'000 switching cycles
AC Voltage	500 V
DC Voltage	500 V
Switching Current	10 A

Bill of Materials

Actuator	45-2131.3110.000
----------	------------------

Holder	45-2300.1000.000
Switch Element 1	45-311.1Z40