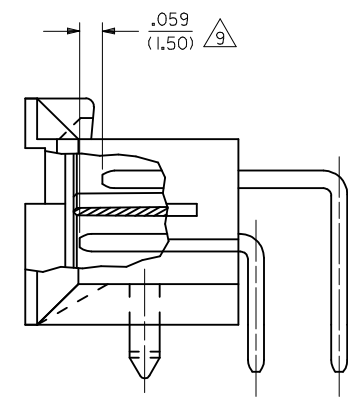
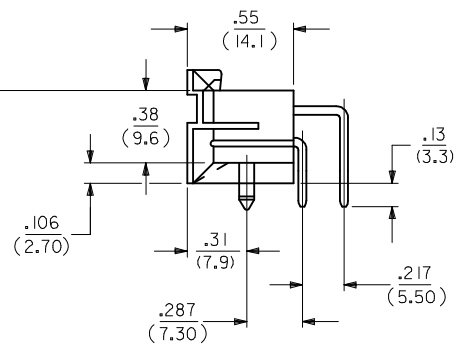
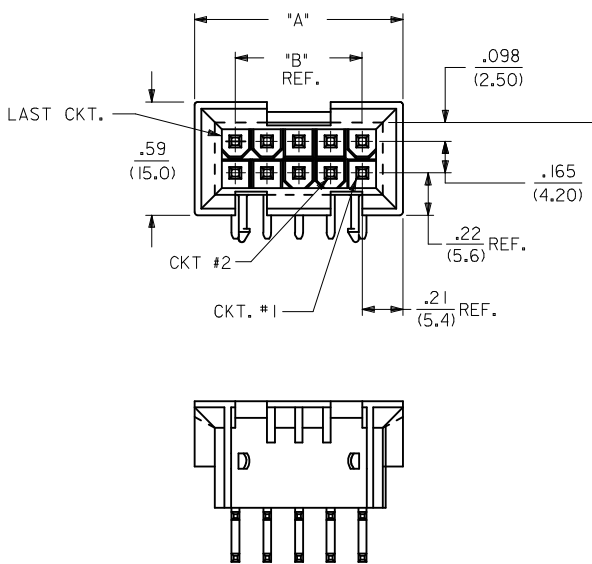
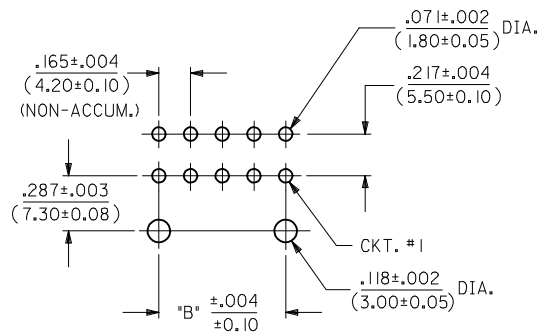
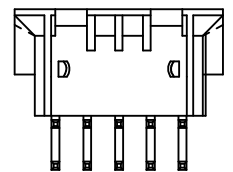


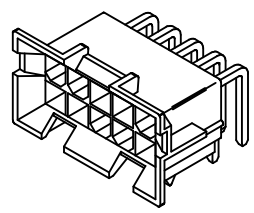
CIRCUIT SIZE	DIM. "A"	DIM. "B"
2	—	—
4	.59 (15.0)	.165 (4.20)
6	.76 (19.2)	.331 (8.40)
8	.92 (23.4)	.496 (12.60)
10	1.09 (27.6)	.661 (16.80)
12	1.25 (31.8)	.827 (21.00)
14	1.42 (36.0)	.992 (25.20)
16	1.58 (40.2)	1.157 (29.40)
18	1.75 (44.4)	1.323 (33.60)
20	1.91 (48.6)	1.488 (37.80)
22	2.08 (52.8)	1.654 (42.00)
24	2.24 (57.0)	1.819 (46.20)



SCALE 4:1



RECOMMENDED HOLE LAYOUT FOR  
.070/(1.78) MAX. THICK P.C. BOARD  
VIEWED FROM COMPONENT SIDE



A-44499-\*

NOTES:

- MATERIAL:  
HOUSING: "A" = NYLON 6/6, UL 94V-2, COLOR: NATURAL  
"B" = NYLON 6/6, UL 94V-0, COLOR: NATURAL  
TERMINALS: BRASS
- TERMINAL PLATING:  
A = .000100/(.00254) MIN. BRIGHT TIN OVER  
.000050/(.00127) MIN. NICKEL OVERALL.  
B = .000030/(.00076) MIN. GOLD OVER  
.000050/(.00127) MIN. NICKEL OVERALL.  
C = .000030/(.00076) MIN. SELECT GOLD AND  
.000100/(.00254) MIN. MATTE TIN OVER  
.000050/(.00127) MIN. NICKEL OVERALL.
- PRODUCT SPECIFICATION: PS-5556-002
- PACKAGING: TRAY PACKED PER MOLEX SPECIFICATION PK-42404-002.
- PART MATES WITH MINI-FIT JR. RECEPTACLE 42385 AND 42474.
- PART ALLOWS FOR UP TO .100/(2.54) MISALIGNMENT WITH MATING RECEPTACLE IN ANY DIRECTION. SEE MATING CONNECTOR DRAWINGS FOR SPECIFIC ALLOWANCES.
- PART IS NOT DESIGNED FOR CURRENT SHARING.
- CONNECTOR ASSEMBLIES ARE NOT TO BE MATED OR UNMATED WHILE CIRCUITS ARE LIVE.
- CIRCUITS SHOWN PROVIDE THE "MAKE-FIRST/BREAK-LAST" FEATURE.
- PART CONFORMS TO CLASS B OF COSMETIC SPECIFICATION PS-45499-002.

4	C4
3	C1
2	C2
1	C4
SHT.	REV.

ADD 44499-0102 EC NO: UCP2009-1454 DRWN:JKLOSTER/ER 2008/12/19 CHKD:JBELL 2008/12/22 APPR:FSMITH 2009/01/05	QUALITY SYMBOLS ▽=0 ▽=0	GENERAL TOLERANCES (UNLESS SPECIFIED)		DIMENSION STYLE <b>IN/MM</b>	SCALE <b>1:1</b>	DESIGN UNITS <b>METRIC</b>	THIRD ANGLE PROJECTION		
		4 PLACES ± --- ± --- 3 PLACES ± --- ± .010 2 PLACES ± 0.25 ± .015 1 PLACE ± 0.38 ± ---	mm INCH ± --- ± --- ± .010 ± .015 ± 0.38 ± ---	DRAWN BY AFG	DATE 1994/09/13	TITLE <b>SELECTIVELY-LOADED RT ANGLE DUAL ROW HEADER (MATE-FIRST/BREAK-LAST)</b>			
		ANGULAR ± 1/2°		CHECKED BY RJF	DATE 1994/09/13	MOLEX MOLEX INCORPORATED			
		DRAFT WHERE APPLICABLE MUST REMAIN WITHIN DIMENSIONS		APPROVED BY RJF	DATE 1994/09/13	MATERIAL NO. <b>SEE CHART</b>	DOCUMENT NO. <b>SDA-44499-*</b>	SHEET NO. <b>1 OF 4</b>	

	13		12		11		10		9		8		7		6		5		4		3		2		1		
	ITEM NO.	CKT. SIZE	CHARACTERISTIC DESCRIPTION		LETTER INDICATES PIN PLATING AND LENGTH REQUIRED AT EACH CIRCUIT LOCATION. SEE NOTE 2 ON SHEET 1.																						
			1	2	3	4	5	6	7	8	9	10	11	12	13	14	15	16	17	18	19	20	21	22	23	24	
J	44499-0036	24	24BA	AS	AS	AM	AM	AS	AS	AM	AM	AS	AS	AS	AS	AS	AM	AM	AS	AS	AS	AS	AS	AM	AS	AS	
	44499-0037	14	14AA	AS	AS	AS	AS	AM	AM	AM	AS	AS	AS	AS	AS	AS	-	-	-	-	-	-	-	-	-	-	
	44499-0038	10	10BB	BM	BM	BM	BM	BS	BS	BS	BS	BS	-	-	-	-	-	-	-	-	-	-	-	-	-	-	
	44499-0039	14	14AA	AS	AS	AS	AS	AS	AS	AM	AM	AM	AS	AS	AS	AS	-	-	-	-	-	-	-	-	-	-	
I	44499-0040	14	14AA	AS	AS	AS	V	AS	AS	AS	AM	V	AM	V	AS	AS	AS	-	-	-	-	-	-	-	-	-	
	44499-0041	14	14AA	AS	AS	AS	V	AS	AS	AS	AM	AS	AS	V	AS	AS	AM	-	-	-	-	-	-	-	-	-	
	44499-0042	10	10BB	BS	BS	BS	BS	BS	BS	BS	BS	BS	BM	-	-	-	-	-	-	-	-	-	-	-	-	-	
	44499-0043	18	18BB	BS	BS	BS	BS	BM	BS	BS	BS	BS	BS	BS	BS	BM	BS	BS	BS	BS	-	-	-	-	-	-	
	44499-0044	04	04BB	BS	BS	BM	BM	-	-	-	-	-	-	-	-	-	-	-	-	-	-	-	-	-	-	-	
H	44499-0045	24	24BB	BM	BM	BM	BM	BM	BM	BM	BM	BM	BM	BM	BM	BM	BM	BM	BM	BM	BM	BM	BM	BM	BM	BM	BM
	44499-0046	24	24B*	AM	AM	BM	BS	BM	AM	AM	AM	BS	AM	AM	AM	AM	BM	BM	BS	AM	AM	AM	AM	AM	AM	AM	
	44499-0047	24	24AA	AS	AM	AM	AM	AM	AM	AM	AM	AM	AM	AM	AM	AM	AM	AM	AM	AM	AM	AM	AM	AM	AM	AS	AM
	44499-0048	24	24BA	AM	AM	AM	AS	AM	AM	AM	AM	AS	AM	AM	AM	AM	AM	AM	AS	AM	AM	AM	AM	AM	AM	AM	
G	44499-0049	24	24AA	AM	AM	AM	AM	AS	AS	AS	AS	AS	AS	AS	AS	AS	AS	AS	AS	AS	AS	AS	AS	AS	AS	AS	
	44499-0050	06	06AA	AM	V	AS	V	AS	-	-	-	-	-	-	-	-	-	-	-	-	-	-	-	-	-	-	
	44499-0051	10	10AA	V	AS	V	AS	V	AS	V	AS	V	AS	-	-	-	-	-	-	-	-	-	-	-	-	-	
	44499-0052	18	18BA	AM	AM	AM	AS	AM	AM	AM	AM	AM	AM	AM	AM	AS	AM	AM	AM	AM	-	-	-	-	-	-	
	44499-0053	18	18AA	AS	AS	AS	AS	AS	AS	AS	AM	AS	AS	AM	AS	AS	AS	AS	AS	AS	-	-	-	-	-	-	
F	44499-0055	10	10BB	BS	BM	BM	BM	BM	BM	BM	BM	BM	-	-	-	-	-	-	-	-	-	-	-	-	-	-	
	44499-0056	14	14BB	BS	BM	BS	BS	BS	BS	BS	BS	BS	BS	BS	BS	-	-	-	-	-	-	-	-	-	-	-	
	44499-0057	18	18B*	AS	AS	AM	AM	BS	BS	AS	AM	BS	AS	AS	AM	AM	BM	BS	AS	BS	-	-	-	-	-	-	
	44499-0058	24	24AA	AS	AS	AM	AM	AM	AM	AM	AM	AM	AM	AM	AM	AM	AM	AM	AM	AM	AM	AM	AM	AS	AM	AM	
E	44499-0059	14	14AA	AS	V	AM	AS	AS	AS	AS	AS	V	AS	AS	AS	AS	AM	-	-	-	-	-	-	-	-	-	
	44499-0060	24	24BB	BS	BS	BM	BS	BS	BS	BS	BS	BS	BM	BS	BS	BS	BS	BS	BS	BS	BS	BS	BM	BS	BS	BS	
	44499-0061	06	06BA	AM	AM	AM	AM	AM	AM	-	-	-	-	-	-	-	-	-	-	-	-	-	-	-	-	-	
	44499-0062	14	14BB	BS	BS	BM	BM	BS	BS	BM	BM	BS	BS	BS	BS	BM	-	-	-	-	-	-	-	-	-	-	
D	44499-0063	18	18BA	AM	AM	AM	AM	AS	AS	AS	AS	AS	AS	AS	AS	AM	AM	AM	AM	-	-	-	-	-	-	-	
	44499-0064	18	18BA	AS	AS	AS	AS	AS	AS	AS	AS	AS	AS	AM	AM	AS	AS	AS	AS	AS	-	-	-	-	-	-	
	44499-0065	24	24BB	BS	BM	BM	BM	BM	BM	BM	BM	BM	BM	BM	BM	BM	BM	BM	BM	BM	BM	BM	BM	BS	BM	BM	
	44499-0066	18	18BA	AS	AS	AS	AS	AS	AS	AS	AS	AS	AS	AS	AM	AS	AS	AS	AM	-	-	-	-	-	-	-	
	44499-0067	06	06AA	AS	AS	AM	AS	AS	AS	-	-	-	-	-	-	-	-	-	-	-	-	-	-	-	-	-	
C	44499-0068	24	24AA	AS	AS	AS	AS	AS	AS	AS	AS	AS	AM	AS	AS	AS	AS	AS	AS	AS	AS	AS	AS	AS	AS	AS	
	44499-0069	18	18BA	AS	AM	AS	AS	AS	AM	AS	AS	AS	AS	AM	AS	AS	AM	AS	AS	AM	-	-	-	-	-	-	
	44499-0070	10	10BA	AS	AS	AS	AS	AS	AM	AS	AS	AS	AM	-	-	-	-	-	-	-	-	-	-	-	-	-	
	44499-0071	24	24BB	BS	BS	BS	BS	BS	BS	BS	BS	BS	BS	BS	BS	BS	BS	BS	BS	BS	BS	BS	BS	BS	BS	BS	

CHARACTERISTICS LEGEND:

CIRCUIT SIZE \_\_\_\_\_ \*\* \* \*

(02-24)

HOUSING MATERIAL \_\_\_\_\_

A = NYLON 6/6, U.L. 94V-2,  
COLOR: NATURAL

B = NYLON 6/6, U.L. 94V-0,  
COLOR: NATURAL

TERMINAL PLATING \_\_\_\_\_

A = 100 m.i. TIN OVERALL  
B = 30 m.i. GOLD OVERALL  
C = 30 m.i. SELECT GOLD  
\* = MIXED TIN AND GOLD

<b>TERMINAL PLATING AND LENGTH CODE</b> AS = 100 m.i. TIN, STANDARD LENGTH BS = 30 m.i. GOLD, STANDARD LENGTH CS = 30 m.i. SELECT GOLD, STANDARD LENGTH AM = 100 m.i. TIN, MATE-FIRST/BREAK-LAST BM = 30 m.i. GOLD, MATE-FIRST/BREAK-LAST CM = 30 m.i. SELECT GOLD, MATE-FIRST/BREAK-LAST V = VOID CIRCUIT	<b>QUALITY SYMBOLS</b> 	<b>GENERAL TOLERANCES (UNLESS SPECIFIED)</b>		<b>DIMENSION STYLE</b> IN/MM		<b>SCALE</b> ---	<b>DESIGN UNITS</b> INCH	<b>THIRD ANGLE PROJECTION</b>
		<b>SEE SHEET ONE</b> FC NO: UCP2007-2017 DRWN:LSCHI DT 2007/02/15 CHKD:ADERR 2007/02/16 APPR:FSM TH 2007/02/16 REV C1	m/m    INCH 4 PLACES ± --- ± --- 3 PLACES ± --- ± --- 2 PLACES ± --- ± --- 1 PLACE ± --- ± --- ANGULAR ± --- °	DRAWN BY DATE LEM 04/29/99 CHECKED BY DATE MAB 04/29/99 APPROVED BY DATE RRE 04/29/99	<b>TITLE</b> SELECTIVELY-LOADED RT. ANGLE DUAL ROW HEADER (MATE-FIRST/BREAK-LAST)	<b>MATERIAL NO.</b> SDA-44499-*	<b>DOCUMENT NO.</b> SDA-44499-*	<b>SHEET NO.</b> 3 OF 4
<b>DRAFT WHERE APPLICABLE MUST REMAIN WITHIN DIMENSIONS</b>		<b>SEE CHART</b>		<b>THIS DRAWING CONTAINS INFORMATION THAT IS PROPRIETARY TO MOLEX INCORPORATED AND SHOULD NOT BE USED WITHOUT WRITTEN PERMISSION</b>				