

**PLEASE CHECK WWW.MOLEX.COM FOR LATEST PART INFORMATION**

**Part Number:** [43810-0331](#)  
**Status:** **Active**  
**Overview:** [Mini-Fit® Blind Mate Interface \(BMI\) Connectors](#)  
**Description:** 4.20mm Pitch Mini-Fit SMC™ Surface Mount Compatible Header, Dual Row, Right Angle, for 3.18mm PCB, 4 Circuits, Tin (Sn) Plating, without Solderable Retention Clip

**Documents:**

<a href="#">3D Model</a>	<a href="#">Product Specification PS-45750-001 (PDF)</a>
<a href="#">Drawing (PDF)</a>	<a href="#">Test Summary TS-43810-001 (PDF)</a>
<a href="#">Product Specification PS-43810-001 (PDF)</a>	<a href="#">RoHS Certificate of Compliance (PDF)</a>

**Agency Certification**

CSA	LR19980
TUV	R72081037
UL	E29179

**General**

Product Family	PCB Headers
Series	<a href="#">43810</a>
Application	Board-to-Board, Power, Wire-to-Board
Comments	Current = 13A max. per circuit when header is mated to a receptacle loaded with <a href="#">45750</a> Mini-Fit® Plus HCS Crimp Terminal Crimped to 16 AWG wire., See Molex product specification PS-45750-001 for additional current de-rating information.
Overview	<a href="#">Mini-Fit® Blind Mate Interface (BMI) Connectors</a>
Product Name	Mini-Fit® SMC
UPC	800753307872

**Physical**

Breakaway	No
Circuits (Loaded)	4
Circuits (maximum)	4
Color - Resin	Black
Durability (mating cycles max)	30
Flammability	94V-0
Glow-Wire Compliant	No
Material - Metal	Brass
Material - Plating Mating	Tin
Material - Plating Termination	Tin
Material - Resin	High Temperature Thermoplastic
Net Weight	3.275/g
Number of Rows	2
Orientation	Right Angle
PC Tail Length	5.08mm
PCB Locator	Yes
PCB Retention	None
PCB Thickness - Recommended	3.20mm
Packaging Type	Tray
Pitch - Mating Interface	4.20mm
Pitch - Termination Interface	4.20mm
Plating min - Mating	2.540µm
Plating min - Termination	2.540µm
Polarized to PCB	Yes
Shrouded	Partial
Stackable	No

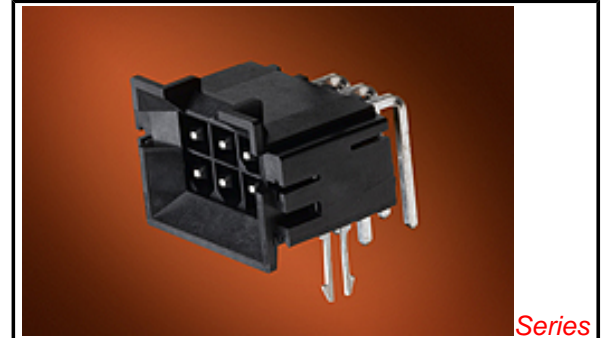


image - Reference only

Series

**EU RoHS**

**ELV and RoHS Compliant**

**REACH SVHC Contains SVHC: No Low-Halogen Status Not Low-Halogen**

**China RoHS**



**Need more information on product environmental compliance?**

Email [productcompliance@molex.com](mailto:productcompliance@molex.com)  
 For a multiple part number RoHS Certificate of Compliance, [click here](#)

Please visit the [Contact Us](#) section for any non-product compliance questions.

**Search Parts in this Series**

[43810Series](#)

**Mates With**

[42385](#) , [42474](#) , [44475](#) , [44516](#) , [5557](#) Dual Row

Surface Mount Compatible (SMC)	Yes
Temperature Range - Operating	-40°C to +105°C
Termination Interface: Style	Through Hole

### **Electrical**

Current - Maximum per Contact	13A
Voltage - Maximum	600V

### **Solder Process Data**

Duration at Max. Process Temperature (seconds)	5
Lead-free Process Capability	Wave Capable (TH only)
Max. Cycles at Max. Process Temperature	1
Process Temperature max. C	260

### **Material Info**

### **Reference - Drawing Numbers**

Product Specification	PS-43810-001, PS-45750-001
Sales Drawing	SD-43810-051
Test Summary	TS-43810-001

This document was generated on 06/27/2013

**PLEASE CHECK [WWW.MOLEX.COM](http://WWW.MOLEX.COM) FOR LATEST PART INFORMATION**