

PLEASE CHECK WWW.MOLEX.COM FOR LATEST PART INFORMATION

Part Number: [43810-0063](#)
Status: **Active**
Overview: [Mini-Fit® Blind Mate Interface \(BMI\) Connectors](#)
Description: 4.20mm Pitch Mini-Fit SMC™ Surface Mount Compatible Header, Dual Row, Right Angle, for 2.39mm PCB, 18 Circuits, Gold (Au) Plating, with Solderable Retention Clip

Documents:

| | |
|--|--|
| 3D Model | Product Specification PS-45750-001 (PDF) |
| Drawing (PDF) | Test Summary TS-43810-001 (PDF) |
| Product Specification PS-43810-001 (PDF) | RoHS Certificate of Compliance (PDF) |

Agency Certification

| | |
|-----|-----------|
| CSA | LR19980 |
| TUV | R72081037 |
| UL | E29179 |

General

| | |
|----------------|---|
| Product Family | PCB Headers |
| Series | 43810 |
| Application | Board-to-Board, Power, Wire-to-Board |
| Comments | Current = 13A max. per circuit when header is mated to a receptacle loaded with 45750 Mini-Fit® Plus HCS Crimp Terminal Crimped to 16 AWG wire., See Molex product specification PS-45750-001 for additional current de-rating information. |
| Overview | Mini-Fit® Blind Mate Interface (BMI) Connectors |
| Product Name | Mini-Fit® SMC |
| UPC | 800753299283 |

Physical

| | |
|--------------------------------|--------------------------------|
| Breakaway | No |
| Circuits (Loaded) | 18 |
| Circuits (maximum) | 18 |
| Color - Resin | Black |
| Durability (mating cycles max) | 30 |
| Flammability | 94V-0 |
| Glow-Wire Compliant | No |
| Material - Metal | Brass |
| Material - Plating Mating | Gold |
| Material - Plating Termination | Gold |
| Material - Resin | High Temperature Thermoplastic |
| Net Weight | 9.969/g |
| Number of Rows | 2 |
| Orientation | Right Angle |
| PC Tail Length | 3.60mm |
| PCB Locator | Yes |
| PCB Retention | Yes |
| PCB Thickness - Recommended | 2.40mm |
| Packaging Type | Tray |
| Pitch - Mating Interface | 4.20mm |
| Pitch - Termination Interface | 4.20mm |
| Plating min - Mating | 0.762µm |
| Plating min - Termination | 0.762µm |
| Polarized to PCB | Yes |
| Shrouded | Partial |
| Stackable | No |

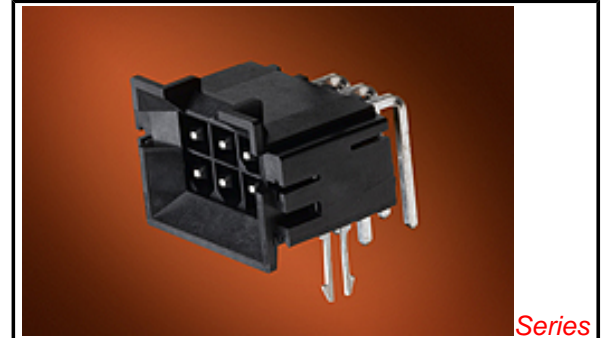


image - Reference only

Series

EU RoHS

ELV and RoHS Compliant

REACH SVHC Contains SVHC: No Low-Halogen Status Not Low-Halogen

China RoHS



Need more information on product environmental compliance?

Email productcompliance@molex.com
 For a multiple part number RoHS Certificate of Compliance, [click here](#)

Please visit the [Contact Us](#) section for any non-product compliance questions.

Search Parts in this Series

[43810Series](#)

Mates With

[42385](#) , [42474](#) , [44475](#) , [44516](#) , [5557](#) Dual Row

| | |
|--------------------------------|-----------------|
| Surface Mount Compatible (SMC) | Yes |
| Temperature Range - Operating | -40°C to +105°C |
| Termination Interface: Style | Through Hole |

Electrical

| | |
|-------------------------------|------|
| Current - Maximum per Contact | 13A |
| Voltage - Maximum | 600V |

Solder Process Data

| | |
|--|------------------------|
| Duration at Max. Process Temperature (seconds) | 5 |
| Lead-free Process Capability | Wave Capable (TH only) |
| Max. Cycles at Max. Process Temperature | 1 |
| Process Temperature max. C | 260 |

Material Info

Reference - Drawing Numbers

| | |
|-----------------------|----------------------------|
| Product Specification | PS-43810-001, PS-45750-001 |
| Sales Drawing | SD-43810-031 |
| Test Summary | TS-43810-001 |

This document was generated on 06/27/2013

PLEASE CHECK WWW.MOLEX.COM FOR LATEST PART INFORMATION