

PLEASE CHECK WWW.MOLEX.COM FOR LATEST PART INFORMATION

Part Number: [0428206222](#)
Status: **Active**
Overview: [Mini-Fit Sr. Power Connectors](#)
Description: 10.00mm Pitch Mini-Fit Sr. Header, Single Row, Right-Angle, 2.36mm PCB Thickness, Tin (Sn) Plating, 6 Circuits, USE NYE LUBE ON MATING SURFACES
Replacement Part Number : <http://www.molex.com/molex/search/partSearch?pQuery=&sType=p&query=0428206223428206223> (Gold)

Documents:

[Drawing \(PDF\)](#) [RoHS Certificate of Compliance \(PDF\)](#)

Agency Certification

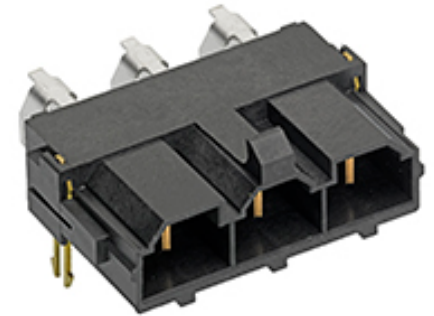
UL E29179

General

Product Family	PCB Headers
Series	42820
Application	Power, Wire-to-Board
Comments	WHEN USING OVERALL TIN PLATED TERMINALS: FOR APPLICATIONS INVOLVING VIBRATION AND/OR THERMAL CYCLING, MOLEX STRONGLY RECOMMENDS THE USE OF NYE LUBRICANT (NYOGEL 7600) ON THE MATING SURFACES OF THE TERMINAL. .
Overview	Mini-Fit Sr. Power Connectors
Product Name	Mini-Fit Sr.
Replacement Part Number	428206223 (Gold)
Replacement Part Number	428206224 (Silver)
UPC	800754383127

Physical

Breakaway	No
Circuits (Loaded)	6
Circuits (maximum)	6
Color - Resin	Black
Durability (mating cycles max)	30
First Mate / Last Break	No
Flammability	94V-0
Glow-Wire Capable	No
Guide to Mating Part	No
Keying to Mating Part	None
Lock to Mating Part	Yes
Material - Metal	Brass
Material - Plating Mating	Tin
Material - Plating Termination	Tin
Material - Resin	High Temperature Thermoplastic
Net Weight	18.574/g
Number of Rows	1
Orientation	Right Angle
PC Tail Length	5.10mm
PCB Locator	Yes
PCB Retention	Yes
PCB Thickness - Recommended	2.36mm
Packaging Type	Tube
Pitch - Mating Interface	10.00mm
Pitch - Termination Interface	10.00mm
Plating min - Mating	2.540µm



Series image - Reference only

EU ELV

Not Relevant

EU RoHS

Compliant

REACH SVHC

Not Contained Per - D(2020)4578-DC (25 June 2020)

Halogen-Free

Status

Not Low-Halogen

For more information, please visit [Contact US](#)

China ROHS

ELV

RoHS Phthalates

China RoHS

Green Image

Not Relevant

Not Contained

Search Parts in this Series

[42820 Series](#)

Mates With

[Mini-Fit Sr. Receptacle Housing with TPA 42816](#)

Plating min - Termination	2.540µm
Polarized to Mating Part	Yes
Polarized to PCB	Yes
Shrouded	Fully
Stackable	No
Surface Mount Compatible (SMC)	No
Temperature Range - Operating	-40° to +105°C
Termination Interface: Style	Through Hole

Electrical

Current - Maximum per Contact	50.0A
Voltage - Maximum	600V

Solder Process Data

Duration at Max. Process Temperature (seconds)	030
Lead-freeProcess Capability	SMC&WAVE
Max. Cycles at Max. Process Temperature	003
Process Temperature max. C	235

Material Info

This document was generated on 09/11/2020

PLEASE CHECK WWW.MOLEX.COM FOR LATEST PART INFORMATION