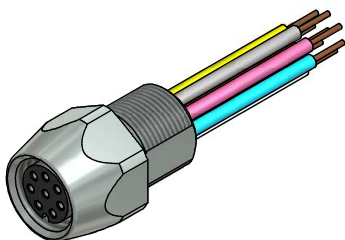


Contact assignment:

- | | |
|-----------|---------|
| 1) white | 5) grey |
| 2) brown | 6) pink |
| 3) green | 7) blue |
| 4) yellow | 8) red |



Technical specification:

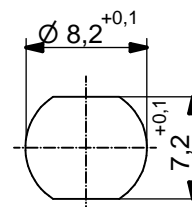
Rated voltage: IEC 61076-2-104	30 V
Current rating: IEC 61076-2-104	1,5 A bei 40°C
Insulation resistance: IEC 60512	>=100 MΩ
Pollution degree: IEC 60664-1	3/2
Degree of protection: IEC 60529	IP 67, in mated condition
Temperature range: IEC 60664-1	-30°C ... +80°C
Mating cycles: IEC 60512-9a	>=100

Materials:

Contact:	CuZn
Contact plating:	Nickel, gold plated
Contact carrier:	TPU GF, UL 94
Sealing:	NBR
Socket housing:	CuZn, nickel plated
Grouting:	Polyurethane-resin, UL 94

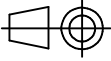

Installation specification:

Recommended torque:	0,6-0,8 Nm
Conec installation tool:	Torque wrench: 36-000200 Insert across flats 10: 36-000270



Minimum wall thickness
1,5mm, alternativ panel
cut-out d=8,2

Part no:	Description:	Pos	Length L:	Wire:
42-01070	SAL - 8 - FK8 - 0,2	8	0,2m	AWG 26 PVC, UL
42-xxxxx	SAL - 8 - FK8 - ...	8	x	

DO NOT ALTER CAD DRAWING BY HAND Directive 2002/95/EC RoHS compliant	Index: b 17.04.12 fro Ä4281 positions corrected in list	 dim. in mm		title: Female socket M8x1 with wire, frontmounting	
		date	name		
	tolerance of wire: L <= 0,5m: L + 20mm L > 0,5m: L + 4%	drawn	29.09.10	Mankopf	dwg no: 42K1A266
	general tolerance: 0 ± 0,50mm 0,0 ± 0,25mm 0,00 ± 0,10mm	appd.	29.09.10	Franz	
				part no: see table	
THIS DRAWING MAY NOT BE COPIED OR REPRODUCED IN ANY WAY, AND MAY NOT BE PASSED ON TO A THIRD PARTY WITHOUT WRITTEN PERMISSION. OWNERSHIP AND COPYRIGHT OF CONEC GmbH					