

SPRING-LOADED CONNECTORS

SERIES 419, 499 • 2,54 GRID TARGET CONNECTORS FOR SPRING-LOADED ASSEMBLIES • DOUBLE ROW STRIPS

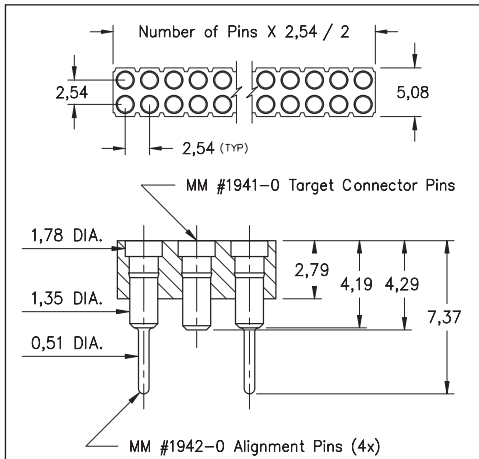
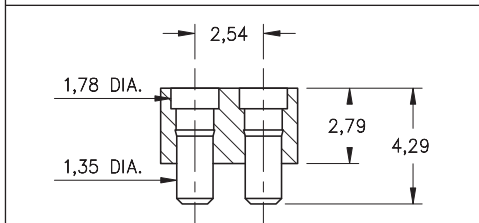
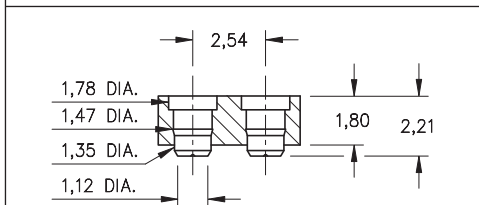


FIG. 1



Coplanarity 0,13. For Pin counts >20 positions, consult Technical Support.

FIG. 2



Coplanarity 0,13. For Pin counts >20 positions, consult Technical Support.

FIG. 3

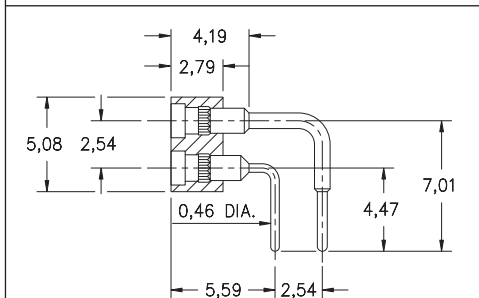
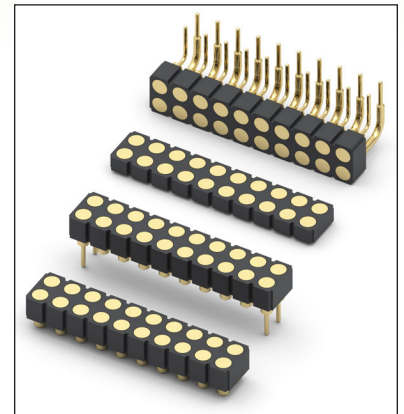


FIG. 4

- Series 419 and 499 Spring Target Connectors, supplied in double row strips. Available in SMT and right angle through-hole termination configurations
- Target Connectors provide an excellent gold-plated conductive mating surface for spring loaded connectors. These series are offered with a flat face for making contact with our standard 1,07 dia. spring pin plungers
- Target connectors use MM #1940, #1941/1942, #1953 and #1954 pins. See pages 218 & 223.3 for details
- Insulators are high temperature thermoplastic



ORDERING INFORMATION

	Series 419...042	Surface Mount w/ Alignments Pins
FIG. 1	419-10-2	-30-042000 Specify number of pins 06-72
FIG. 2	Series 419...041	Surface Mount 419-10-2 -30-041000 Specify number of pins 04-72
FIG. 3	Series 419...054	Low Profile Surface Mount 419-10-2 -30-054000 Specify number of pins 04-72
FIG. 4	Series 499...008	Right Angle Solder Tails 499-10-2 -10-008000 Specify number of pins 04-64



XX=Plating Code
See Below

For
Electrical, Mechanical
& Environmental Data,
See page 264

SPECIFY PLATING CODE XX=	10			
Pin Plating 	0,25µm Au			

