



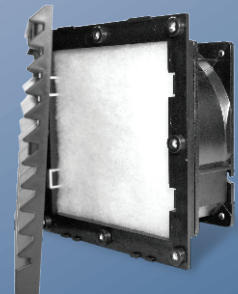
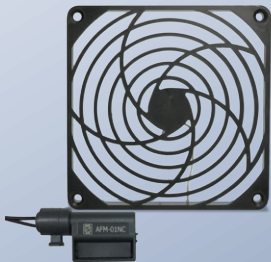
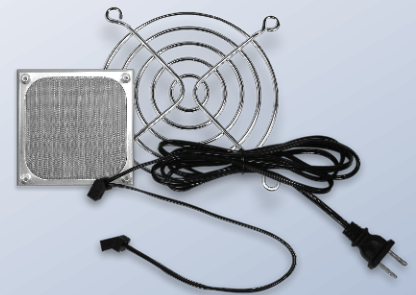
ORION FANS

We'll make YOU a fan.

PRODUCT SELECTOR GUIDE

Easily Access Data Sheets, Inventory... and Buy Now

AC Fans | DC Fans | EC Fans
Fan Trays | Louvered Filter Fan Kits
Accessories | Blowers | Motorized Impellers





ORION FANS

COOL IDEAS

Click on any title below to access more information

Louvered Filter Fan Kits with new Slide or Hinged Guards

Orion Fans delivers the industry's lowest cost filter fan kit, including louvered fan guard, filter, fan, metal guard, and hardware. The new slide and hinged guard versions provide an easier, faster way to access and change filters. The heavy-duty louvered filtered guards keep dust, dirt and moisture out of the enclosure. Unlike competitors' guards, Orion's louvered guards feature UV protection as standard. The kits provide an IP54, IP55, IP56 rating.



EC Fans

Designed for power hungry equipment, Orion's Electronically Commutated (EC) fans offer a lower power, energy-efficient cooling solution. The AC input fans utilize a brushless DC Motor and incorporate voltage transformation within the motor for significantly lower power consumption. Some models available with dual speed functionality and universal voltage range, and other models with IP68 rating and ATEX certification.



AC & DC Motorized Impellers

Orion Fans AC & DC motorized impellers offer a low power, energy-efficient solution. Available from 133mm to 400mm, these motorized impellers can be used in circular, rectangular or scroll shaped housings as well as free air operation environments. Ideal for electronic cabinet, telecom, networking, air filtration and ventilation systems. Orion Fans ships the required capacitor with all AC impeller models. DC models include PWM and Tachometer as standard features. Optional metal duct rings are available.



Lowest Cost AC Fan Airflow Monitoring System

At \$37.50, the AFM Series is a low cost solution for indicating positive or negative airflow in AC or DC fan/blower applications in servers, telecom switches, power supplies, kiosks and medical equipment. The AFM module can operate an optical LED, audible alarm, or other relay driven signals, when airflow falls below 8.2 ft/s due to fan filter clogs or foreign materials coming in contact with the fan blade. An AFM Kit is also available including an AFM-01NC, clip, three plastic guards (80, 92, & 120mm), buzzer, LED and holder, switch and power supply.



Harsh Environment Fans

Orion's comprehensive line of waterproof harsh environment AC fans, DC fans and accessories are designed to protect against dust, moisture, salt fog, salt spray, temperature changes, humidity and more. With the industry's shortest lead times, Orion's harsh environment fans can be quickly integrated into process control, HVAC equipment, industrial and military designs.



Industry's Lowest Cost Fan Trays

As the industry's largest AC & DC fan tray manufacturer, Orion delivers the lowest cost 3-, 6-, and 9-fan tray solutions for a wide range of rack-mount, ventilation hood and enclosure applications. Orion's Thermalcare Series of modular fan assemblies enable easy expansion with the "add-a-module" feature. The Short Fan Tray Series of 3- and 6-fan assemblies fit any 19" rack with optional "smart" fan control.



Accessorize Your Fans

Orion Fans offers the industry's broadest line of fan accessories, including fan guards, filters, filter kits, cords, power cords, cage nuts, Air Flow Monitor (AFM) modules and AFM kits. Additions to the accessories family include Specialty Filters that are high density, water repellent or fire retardant along with new easy access slide or hinged louvered fan guards. Designed to provide additional protection, simplify installation and reduce maintenance time and cost, these new filters and guards make it easier to access and change filters.



Cost-efficient Sealed Sleeve Fans

A less expensive alternative to ball bearing fans, Orion Fans sealed sleeve fans perform like a ball-bearing fan, but at a significant lower cost. With a longer life expectancy than sleeve bearing fans (up to 50,000 hours), sealed sleeve fans are designed for volume requirements in high performance applications. Available in the most popular DC frame sizes from 40mm to 120mm, the sealed sleeve fans deliver airflows up to 105 CFM.



DC Fans for High Static Pressure Environments

Designed for highly restrictive environments found in telecom, medical and industrial applications, Orion's family of high static pressure DC fans, deliver superior airflows up to 283 CFM. The Vane Axial and Super High Performance fan series feature specially designed blades that focus air movement to push/pull air through obstacles to cool radiators, CPUs and other high static pressure applications.



Click on any part number below to access product information.



AC FANS, EC FANS and LOUVERED FILTER FAN KITS

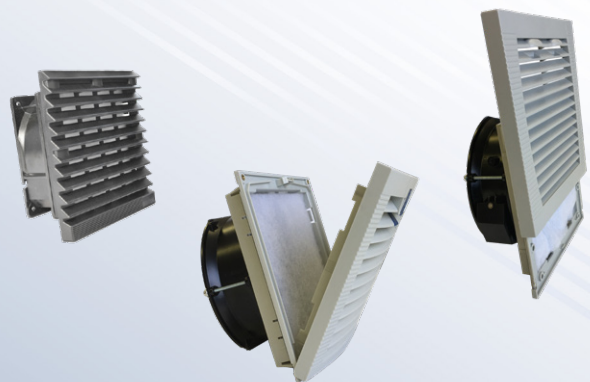
Broad fan selection, short lead times, competitive pricing.

- Airflow from 11-1130 CFM
- Fan diameter sizes from 60mm to 280mm
- Ball bearing or sleeve bearing versions
- Universal range and dual voltage versions
- IP55 to IP68-ATEX versions

AC FANS SERIES	mm (in)	Voltage (V)	Airflow (CFM)
OA60	60x60x30 (2.36x1.20)	115, 230	11
OA825	80x80x25 (3.15x1.0)	115, 230 DV*	16 - 25
OA80	80x80x38 (3.15x1.5)	115, 230 DV*	17 - 31
OA80 - Metal	80x80x38 (3.15x1.5)	115, 230	18 - 33
OA92	92x92x25 (3.62x1.0)	115, 230 DV*	22 - 35
OA938	92x92x38 (3.62x1.5)	115, 230 DV*	26 - 50
OA938 - Metal	92x92x38 (3.62x1.5)	115, 230	27 - 55
OA125	120x120x25 (4.7x1.0)	115, 230 DV*	42 - 81
OA109	120x120x38 (4.7x1.5)	115, 230 DV*	51 - 110
OA109 AIOS	120x120x38 (4.7x 1.5)	115, 230	75 - 99
OA109(XC)	120x120x38 (4.7x1.5)	115, 230	110 - 131
OA109 - Metal	120x120x38 (4.7x1.5)	115, 230	58 - 105
OA109AP - IP55	120x120x38 (4.7x1.5)	115, 230	106
OA109AP - Salt Fog	120x120x38 (4.7x1.5)	115, 230	106
OA109 AP Smart Fan	120x120x38 (4.7x1.5)	115, 230	63 - 97
OA4715	120x120x38 (4.7x1.5)	115, 230	111
OA1238AP	120x120x38 (4.7x1.5)	115, 230	85 - 97
OA119	127x127x38 (5.0x1.5)	115, 230 DV*	74 - 130
OA119 - Metal	127x127x38 (5.0x1.5)	115, 230	65 - 128
OA5920	172x150x51 (6.7x5.9x2.0)	115, 230	180
OA172SAPL	172x150x38 (6.7x5.9x1.5)	115, 230	108 - 228
OA172SAP	172x150x51 (6.7x5.9x2.0)	115, 230	135 - 235
OA172SAP (XC)	172x150x51 (6.7x5.9x2.0)	115, 230	300
OA172SAP - Metal	172x150x51 (6.7x5.9x2.0)	115, 230	95 - 210
OA172SAP - IP55	172x150x51 (6.7x5.9x2.0)	115, 230	226
OA172SAP - Salt Fog	172x150x51 (6.7x5.9x2.0)	115, 230	226
OA172SAP (XC) Salt Fog	172x150x55 (6.7x5.9x2.2)	115, 230	293
OA172SAPL - IP55	172x150x38 (6.7x5.9x1.5)	115, 230	103 - 228
OA172AP	172x172x51 (6.7x2.0)	115, 230	135 - 235
OA172AN	172x172x51 (6.7x2.0)	115, 230	135 - 235
OA172 - Metal	172x172x51 (6.7x2.0)	115, 230	105 - 215
OA162 - Metal	172x172x55 (6.7x2.17)	115, 230	100 - 210
OA162	172x172x55 (6.7x2.17)	115, 230	241
OA180AP	176x176x89 (6.9x3.5)	115, 230	375
OA180AN - Metal	176x176x89 (6.9x3.5)	115, 230	175 - 380
OA180ANL - Metal	180x180x65 (7.1x2.56)	110, 240	185 - 400
OA180APL	180x180x65 (7.1x2.6)	115, 230	210 - 405
OA180 - IP55	180x180x90 (7.1x3.5)	230	460
OA200AN - Metal	200x220x70 (7.8x2.8)	115, 230	230 - 485
OA205AN - Metal	205x72 (8.0x2.8)	115, 230	310 - 650
OA225 - Metal	225x225x80 (8.85x3.15)	115, 230	530 - 600
OA254	254x89 (10x3.5)	115, 230	460 - 547
OA254 (XC)	254x89 (10x3.5)	115, 230	320 - 850
OA254AP - Salt-Fog	254x89 (10x3.5)	115, 230	550
OA2543AN - Metal	254x89 (10x3.5)	115, 230	460 - 930
OA2547AN - Metal	254x89 (10x3.5)	115, 230	500 - 1000
OA280 - Metal	280x280x80 (11x3.15)	115, 230	1130



EC FANS SERIES	mm (in)	Voltage (V)	Airflow (CFM)
OA60EC	60x60x25 (2.36x1.00)	95-264	19.5-20
OA60EC-ATEX	60x60x25 (2.36x1.00)	95-264	19.5-20
OA109EC	120x120x38 (4.7x1.5)	90-265	106
OA109EC-ATEX	120x120x38 (4.7x1.5)	90-265	106
OA172EC	172x150x51 (6.7x5.9x2.0)	115, 230	220
OA172EC-ATEX	172x150x51 (6.7x5.9x2.0)	115, 230	220
OA200EC	250x76 (9.85x3.0)	115, 230	290 - 460
OA254EC	254x89 (10x3.5)	95-264	500
OA254EC-XC	254x89 (10x3.5)	115, 230	830
OA254EC-ATEX	254x89 (10x3.5)	95-264	500
OA254EC-XC-ATEX	254x89 (10x3.5)	115, 230	830



LOUVERED FILTER FAN KITS			Voltage (V)	Airflow (CFM)
Snap-On	Slide	Hinged		
OA109LFG	OA109LFGS	OA109LFGH	115, 230	64
OA172LFG	OA172LFGS	OA172LFGH	115, 230	141
OA172LFG XC	OA172LFGS XC	OA172LFGH XC	115, 230	180
OA225LFG	OA225LFGS	OA225LFGH	115, 230	318 - 360
OA254LFG	OA254LFGS	OA254LFGH	115, 230	276-328
OA254LFG XC	OA254LFGS XC	OA254LFGH XC	115, 230	276-328
OA280LFG	OA280LFGS	OA280LFGH	115, 230	654 - 678

Information and data is subject to change without prior notification.

* DV = 115/230 Dual Voltage

All Kits have an IP54 or higher rating

Click on any part number below to access product information.



DC FANS

Standard, special function and custom DC fans with JIT delivery worldwide

- Airflow from 1.8 to 1200 CFM
- Voltages from 5VDC to 60VDC
- Fan diameter sizes from 25mm to 280mm
- Ball, sealed sleeve or sleeve bearing versions

* These models can be salt-fog, IP55, and/or IP68 rated

DC FAN	mm (in)	Voltage (V)	Airflow (CFM)
OD2510	25x25x10 (1x0.39)	5, 12	1.8 - 2.7
OD3010	30x30x10 (1.18x0.39)	5, 12	3.3 - 4.6
OD3510	35x35x10 (1.18x0.39)	5, 12	3 - 6
OD4010*	40x40x10 (1.57x0.39)	5, 12, 24	5 - 7
OD4010-SS	40x40x10 (1.57x0.40)	12, 24	6.7
OD4015	40x40x15 (1.57x0.79)	5, 12, 24	6.8 - 8.5
OD4020*	40x40x20 (1.57x0.79)	5, 12, 24	7 - 9
OD4020-SS	40x40x20 (1.57x0.79)	12, 24	9
OD4028	40x40x28 (1.57x1.1)	5, 12, 24	7 - 11
OD4028(XC)*	40x40x28 (1.57x1.1)	12	26.5
OD5010	50x50x10 (1.97x0.39)	5, 12, 24	9 - 11
OD5015	50x50x15 (2.04x0.39)	12	14
OD5210	52x52x10 (2.04x0.39)	5, 12	10 - 12
OD6010	60x60x10 (2.36x0.39)	5, 12	14 - 21
OD6015	60x60x15 (2.36x0.59)	5, 12, 24	11 - 18
OD6020	60x60x20 (2.36x0.79)	12, 24	13 - 18
OD6025*	60x60x25 (2.36x1.0)	5, 12, 24, 48	13 - 28
OD6025-IP68	60x60x25 (2.36x1.0)	12, 24, 48	14 - 32
OD6025-60LB	60x60x25 (2.36x1.0)	60	26
OD6025 SS	60x60x25 (2.36x1.0)	12, 24	25
OD6025 (XC)	60x60x25 (2.36x1.0)	12, 24, 48	32 - 38
OD6038VXC*	60x60x38 (2.36x1.5)	12, 24	38 - 61
OD6038 High Static Pressure	60x60x38 (2.36x1.5)	12	76 - 86
OD7015	70x70x15 (2.76x0.60)	12	28.5 - 41
OD7020	70x70x20 (2.76x0.79)	12	41 - 45
OD7025	70x70x25 (2.76x1.0)	12, 24	33 - 60
OD8015	80x80x15 (3.15x0.59)	12, 24	20 - 30
OD8025*	80x80x25 (3.15x1.0)	5, 12, 24	19 - 44
OD8025-IP68	80x80x25 (3.15x1.0)	12, 24, 48	22 - 48
OD8025 SS	80x80x25 (3.15x1.0)	12, 24	40
OD8025 (XC)	80x80x25 (3.15x1.0)	12, 24, 48	56 - 72
OD8032	80x80x32 (3.15x1.25)	12, 24, 48	40 - 50
OD8032-IP68	80x80x32 (3.15x1.25)	12, 24, 48	60.4 - 81.6
OD8038	80x80x38 (3.15x1.5)	12, 24	38 - 61
OD8038-IP68	80x80x38 (3.15x1.5)	12, 24, 48	48.5 - 80.3
OD8038VXC*	80x80x38 (3.15x1.5)	12, 24, 48	76 - 112
OD8038 High Static Pressure	80x80x38 (3.15x1.5)	12, 48	141
OD9220	92x92x20 (3.62x0.79)	12, 24	28 - 32
OD9225*	92x92x25 (3.62x1.0)	12, 24, 48	39 - 60
OD9225-IP68	92x92x25 (3.62x1.0)	12, 24, 48	25 - 60
OD9225 SS	92x92x25 (3.62x1.0)	12, 24	52
OD9225 - 60HB	92x92x25 (3.62x1.0)	60	69
OD9225 (XC)	92x92x25 (3.62x1.0)	12, 24, 48	63 - 84
OD9238	92x92x38 (3.62x1.5)	12, 24	90
OD9238-IP68	92x92x25 (3.62x1.0)	12, 24, 48	25 - 60

DC FAN	mm (in)	Voltage (V)	Airflow (CFM)
OD9238VXC*	92x92x38 (3.62x1.0)	12, 24, 48	108 - 135
OD9238 High Static Pressure	92x92x38 (3.62x1.5)	12	174
OD1225	120x120x25 (4.7x1.0)	12, 24	72 - 89
OD1225-IP68	120x120x25 (4.7x1.0)	12, 24, 48	45 - 86
OD1225 SS	120x120x25 (4.7x1.0)	12, 24	85
OD1225 48V	120x120x25 (4.7x1.0)	48	45 - 86
OD1225 (XC)	120x120x25 (4.7x1.0)	12, 24, 48	76 - 122
OD1225VXC	120x120x25 (4.7x1.0)	12, 24, 48	126 - 176
OD1232	120x120x32 (4.7x1.25)	12, 24, 48	93 - 120
OD1238*	120x120x38 (4.7x1.5)	12, 24, 48	53 - 105
OD1238AP	120x120x38 (4.7x1.5)	12, 24, 48	70 - 140
OD1238-IP68	120x120x38 (4.7x1.5)	12, 24, 48	103 - 136
OD1238 High Static Pressure	120x120x38 (4.7x1.5)	12	207
OD1238VXC*	120x120x38 (4.7x1.5)	12, 24, 48	140 - 283
OD1238 SS	120x120x38 (4.7x1.5)	12, 24	96 - 105
OD1238XC	120x120x38 (4.7x1.5)	12, 24, 48	130 - 220
OD1238 Super High*	120x120x38 (4.7x1.5)	12, 24, 48	154
OD1238-60HB*	120x120x38 (4.7x1.5)	60	115
OD1238 HTB	120x120x38 (4.7x1.5)	12, 24, 48	90
OD127 (XC)	127x127x38 (5x1.5)	12, 24, 48	107 - 242
OD127AP	127x127x38 (5x1.5)	12, 24, 48	86 - 140
OD172SAPL	172x150x38 (6.7x5.9x1.5)	12, 24, 48	120 - 225
OD172SAP	172x150x51 (6.7x5.9x2.0)	12, 24, 48	125 - 300
OD172SAP-IP68	172x150x51 (6.7x5.9x2.0)	12, 24, 48	125 - 300
OD172SAP (XC)	172x150x51 (6.7x5.9x2.0)	12, 24, 48	232 - 307
OD180	180x180x65 (7.1x2.6)	12, 24, 48	300 - 470
OD254	254x89 (10x3.5)	12, 24, 48	550 - 830
OD280	280x89 (11x3.5)	12, 24, 48	780 - 1200



Click on any part number below to access product information.



FAN TRAYS and CONTROLLERS

Flexibility. Efficiency. Very cost-effective.

- Pre-wired modular design
- Remote monitoring and noise reduction versions available
- Configurable versions

AC FAN TRAY SERIES	Voltage	# of Fans	Airflow (CFM)	Part No.
OA300	115VAC	3	330	FTA-03115-018(BK)
OA300S		3	330	FTA-018B311HF (S)
OA300ST-120		3	310	FTA-018C311(HF)
OA300ST-12003		3	190 - 300	FTA-018C311HF(03)
OA300ST-12004		3	190 - 300	FTA-018C311HF(04)
OA600S		6	660	FTA018B611HF (S)
OA600ST-120		6	620	FTA-018C611(HF)
OA600		6	660	FTA-06115-018(BK)
OA900		9	990	FTA-09115-018(BK)
OA300ST-230		230VAC	3	310
OA300ST-23003	3		190 - 300	FTA-018C322HF(03)
OA300ST-23004	3		190 - 300	FTA-018C322HF(04)
OA302	3		330	FTA-03220-018(BK)
OA302S	3		330	FTA-018B322HF (S)
OA600ST-230	6		620	FTA-018C622(HF)
OA602	6		660	FTA-06220-018(BK)
OA602S	6		660	FTA018B622HF (S)
OA902	9		990	FTA-09220-018(BK)
OA300-DV	115/230VAC		3	330
OA300S-DV		3	330	FTA-03DV-014(BK)
OA600-DV		6	660	FTA-06DV-018(BK)
OA600S-DV		6	660	FTA-06DV-014(BK)
OA900-DV		9	990	FTA-09DV-018(BK)
OA406	90-264VAC	6	160	OA406 (NEMA 5-15 plug)
OA406-DUAL	115/230VAC	6	160	with redundant power supply
OA406-PS	Power Supply			converts OA406 to DUAL

DC FAN TRAY SERIES	Voltage	# of Fans	Airflow (CFM)	Part No.	
OD300-12	12VDC	3	330	FTD-03012-018(BK)	
OD300S-12		3	330	FTD-030 12 -014(BK)	
OD600-12		6	660	FTD-06012-018(BK)	
OD600S-12		6	660	FTD-060 12-0 14(BK)	
OD900-12	24VDC	9	990	FTD-09012-018(BK)	
OD300-24		3	330	FTD-03024-018(BK)	
OD300S-24		3	330	FTD-03024-014(BK)	
OD600-24		6	660	FTD-06024-018(BK)	
OD600S-24		6	660	FTD-06024-014(BK)	
OD900-24		9	990	FTD-09024-018(BK)	
OD300-48		48VDC	3	330	FTD-03048-018(BK)
OD300S-48			3	330	FTD-03048-014(BK)
OD600-48	6		660	FTD-06048-018(BK)	
OD600S-48	6		660	FTD-06048-014(BK)	
OD900-48		9	990	FTD-09048-018(BK)	



FAN TRAY BLOWER ASSEMBLIES	Voltage	Airflow (CFM)
OMB5200-120	115VAC	340
OMB5200-230	230VAC	340

FAN SPEED CONTROL UNIT	Voltage
OA11/22CB	120/220V



THERMAL CONTROLLER	Voltage	Output
TCAC001	120/230V	10 Amps



POWER DISTRIBUTION UNITS	Voltage	# of Outlets
OSP-V-20-11-16-N1	115	16
OSP-V-16-23-16-N1	230	16
OSP-H-16-23-08-N1	230	8
OSP-H-15-11-08-N1	115	8



Fan trays are UL Listed by the part number only. Model numbers are assigned as configuration descriptors only and do not affect UL certifications.

Information and data is subject to change without prior notification.

Click on any part number below to access product information.



ACCESSORIES

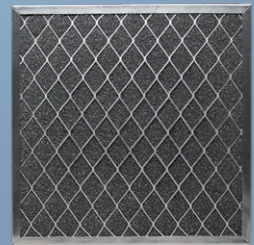
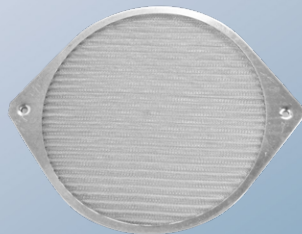
Manufactured by Orion Fans - Optimized for Orion fans

- Fan Guards
- Filter Media
- Cage Nuts
- Spot Cool
- Fan Filters
- Air Flow Monitors
- Fan Cords

Fan Size	Matching Fan Series		Steel Wire Guards	Wire Mesh Guards	Plastic Guards	Push-on Guards	Louvered Guards	Filter Kits	Specialty Filters
	AC (OA)	DC (OD)							
25mm (1.0")		2510	G25-2						
40mm (1.57")		4010, 4015, 4020, 4028	G40-2		G40P			GRM40-30 GRM40-45	
50mm (2.05")		5010, 5015	G50-3						
60mm (2.36")	60	6010, 6015, 6020, 6025, 6038	G60-4	WMG60M WMG60B	G60P			GRM60-30 GRM60-45	
70mm (2.76")		7015, 7020, 7025	G70-4						
80mm (3.15")	80, 825	8015, 8025, 8032, 8038	G80-18 G80-18B	WMG80M WMG80B	G80P	G80POG	LFG80 LFGH8092	GRM80-30 GRM80-45	
92mm (3.62")	92, 938	9220, 9225, 9238	G92-16 G92-16B	WMG92M WMG92B	G92P	G92POG	LFG92 LFGH8092	GRM92-30 GRM92-45	
120mm (4.7")	109, 125, 4715	1225, 1232, 1238	G109-15-1 G109-15B-1 G109-15A G109-15AB	WMG120M WMG120B	G120P	G120POG	LFG120B LFGH120* LFGS120*	GRM120-30 GRM120-45	LFG120FHD LFG120FHDDH LFG120FHDP
127mm (5.0")	119	127	G119-8 G119-13	WMG127M WMG127B					
172mm (6.7")	109*, 125*, 4715*, 162, 172, 5920	1225*, 1232*, 1238*, 172	G172-10H G172-10HB G172-10HA G172-10HAB G172-10LN	WMG172M WMG172B	G172P		LFG172B LFGH172* LFGS172*	GRM172-30 GRM172-45	LFG172FHD LFG172FHDDH LFG172FHDP
180mm (7.0")	180	180	G180-11						
200mm (7.87")	162*, 172S*, 5920*, 200AN, 225*	OD172*	G200-12				LFGH200* LFGS200*		LFG200FHD LFG200FHDDH LFG200FHDP
205mm (8.07")	205AN		G205-8D						
225mm (8.85")	225		G225				LFG225B		
254mm (10.0")	254, 2543AN, 2547AN	254	G254-10 G254-10P				LFG254B LFGH254 LFGS254		LFG254FHD LFG254FHDDH LFG254FHDP
280mm (11.0)	162*, 172S*, 5920*, 180*, 200AN*, 225*, 254*, 2543AN*, 2547*, OA280	172*, 180*, 254*, 280	G280				LFG280B LFGH280* LFGS280*		LFG280FHD LFG280FHDDH LFG280FHDP

* Fan series with an asterisk fit larger size Slide and Hinged Louvered Guards * even though they do not match the Fan Size column

Louvered guards come standard in black or gray depending on size



Click on any part number below to access product information.



ACCESSORIES

Manufactured by Orion Fans - Optimized for Orion fans

AIR FLOW MONITORS

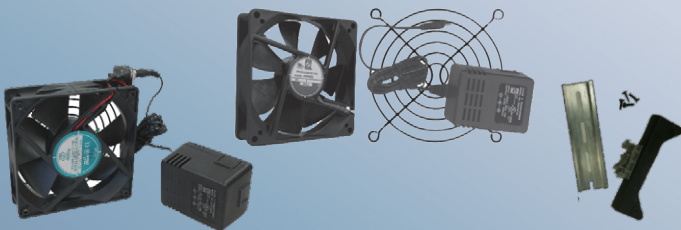


AFM-01NC	Air Flow Monitor Switch, NC w/ clip and clamp
AFM-01NO	Air Flow Monitor Switch, NO w/ clip and clamp
AFM-80NC	Air Flow Monitor Switch, NC w/ 80mm guard
AFM-80NO	Air Flow Monitor Switch, NO w/ 80mm guard
AFM-92NC	Air Flow Monitor Switch, NC w/ 92mm guard
AFM-92NO	Air Flow Monitor Switch, NO w/ 92mm guard
AFM-120NC	Air Flow Monitor Switch, NC w/ 120mm guard
AFM-120NO	Air Flow Monitor Switch, NO w/ 120mm guard
AFM-KIT	Includes an AFM-01NC, clip, three plastic guards (80, 92, & 120mm), buzzer, LED and holder, switch and power supply.



CAGE NUTS (OCN Series)	Label	Hole Style	Thread
OCN-1032PK	Cage Nuts	Square	10-32
OCN-1032RHPK	Cage Nuts	Round	10-32
OCN-1032RHHDWPK	Washers	Round	N/A
OCN-1032SCWPK	Screws	N/A	10-32
OCN-1224PK	Cage Nuts	Square	12-24
OCN-1224SCWPK	Screws	N/A	12-24
OCN-1224WSPK	Washers	Square	N/A
OCN-M6PK	Cage Nuts	Square	M6
OCN-M6SCWPK	Screws	N/A	M6

Packs contain 25 qty



SPOT COOL FANS	mm (in)	Voltage	Airflow (CFM)
OD9225-SPOT	92x92x25 (3.62x1.0)	120VAC	25 - 50
OD1232-SPOT	120x120x32 (4.7x1.25)	120VAC	30 - 50
OD1232-SPOT / DIN	120x120x32 (4.7x1.25)	120VAC	30 - 50

Spot Cooler includes fan, 1 fan guard, and power adapter with 6' cord

SPOT-DIN includes fan, DIN rail, DIN mount fan bracket, mounting screws, 2 fan guards, power adapter with 6' cord, and automotive grade, double-sided tape

Information and data is subject to change without prior notification.



FAN CORDS	Head Style	# of Heads	Tail Length	Termination
C180-12	Straight	1	12"	Blunt Cut
C180-24	Straight	1	24"	Blunt Cut
C180-36	Straight	1	36"	Blunt Cut
C180-48	Straight	1	48"	Blunt Cut
C180-48P	Straight	1	48"	Plug Added
C180-72	Straight	1	72"	Blunt Cut
C180T-12	"T"	1	12"	Blunt Cut
C180T-24	"T"	1	24"	Blunt Cut
C180T-36	"T"	1	36"	Blunt Cut
C180T-48	"T"	1	48"	Blunt Cut
C180T-72	"T"	1	72"	Blunt Cut
C45-12	45 Degree	1	12"	Blunt Cut
C45-144	45 Degree	1	144"	Blunt Cut
C45-144P	45 Degree	1	144"	Plug Added
C45-24	45 Degree	1	24"	Blunt Cut
C45-24P	45 Degree	1	24"	Plug Added
C45-2DC-24	45 Degree	2	24"	Blunt Cut
C45-2DC-144P	45 Degree	2	144"	Plug Added
C45-2DC-36	45 Degree	2	36"	Blunt Cut
C45-2DC-60	45 Degree	2	60"	Blunt Cut
C45-2DC-72P	45 Degree	2	72"	Plug Added
C45-2DC-84	45 Degree	2	84"	Blunt Cut
C45-36	45 Degree	1	36"	Blunt Cut
C45-3DC-24	45 Degree	3	24"	Blunt Cut
C45-3DC-144P	45 Degree	3	144"	Plug Added
C45-3DC-72P	45 Degree	3	72"	Plug Added
C45-3DC-24P	45 Degree	3	24"	Plug Added
C45-48	45 Degree	1	48"	Blunt Cut
C45-48P	45 Degree	1	48"	Plug Added
C45-4DC-24	45 Degree	4	24"	Blunt Cut
C45-4DC-72P	45 Degree	4	72"	Plug Added
C45-60P	45 Degree	1	60"	Plug Added
C45-6DC-24	45 Degree	6	24"	Blunt Cut
C45-72	45 Degree	1	72"	Blunt Cut
C45-72P	45 Degree	1	72"	Plug Added
C45-9DC-24	45 Degree	9	24"	Blunt Cut
C90-12	90 Degree	1	12"	Blunt Cut
C90-144P	90 Degree	1	144"	Plug Added
C90-24	90 Degree	1	24"	Blunt Cut
C90-36	90 Degree	1	36"	Blunt Cut
C90-48	90 Degree	1	48"	Blunt Cut
C90-72	90 Degree	1	72"	Blunt Cut
C90-80P	90 Degree	1	80"	Plug Added

DC = Daisy Chain

Additional information on fan cords, daisy chains, power cords, power distribution units and cage nuts at: <http://orionfans.com/products/accessories>

Click on any part number below to access product information.



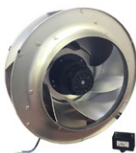
BLOWERS and MOTORIZED IMPELLERS

- AC & DC Blowers
- AC & DC Backward Curved Impellers

AC & DC BLOWERS	Voltage (V)	Airflow (CFM)
OAB800AN-11-1B	115 VAC	30
OAB800AN-11-2B	115 VAC	22
OAB800AN-11-3B	115 VAC	14
OAB800AN-22-1B	220 VAC	30
OAB800AN-22-2B	230 VAC	22
OAB800AN-22-3B	230 VAC	14
OAB908AN-11-1/2	120 VAC	100/75
OAB908AN-11-3	115 VAC	50
OAB908AN-22-1/2	220 VAC	100/75
OAB908AN-22-3	230 VAC	50
ODB5009	5, 12 VDC	3
ODB5115	12 VDC	2.4 - 4.2
ODB600PT	12, 24 VDC	20 - 25 - 35
ODB6015-12HHB02A	12 VDC	7.45
ODB7530	12, 24 VDC	10
ODB9733	12, 24 VDC	33
ODB1232	12, 24, 48 VDC	25 - 33
ODB182	24, 48 VDC	136



MOTORIZED* IMPELLERS	Voltage (V)	Airflow (CFM)
OAB13372	115, 230 VAC	165/188
OAB13391	115, 230 VAC	168/188
OAB18055	115, 230 VAC	265/290
OAB190	120, 230 VAC	370
OAB220	120, 230 VAC	530
OAB22569	115, 230 VAC	500/550
OAB22585	115, 230 VAC	618/680
OAB22599	115, 230 VAC	700/770
OAB250	115, 230 VAC	850
OAB318	115, 230 VAC	1015/1165
OAB360	115, 230 VAC	1645
OAB400	230 VAC	1900
ODB13391-24HB10A	24 VDC	257
ODB13391-48HB10A	48 VDC	257
ODB17567-12HB10A	12 VDC	298
ODB17567-24HB10A	24 VDC	298
ODB17567-48HB10A	48 VDC	298
ODB19069-24HB10A	24 VDC	395
ODB19069-48HB10A	48 VDC	432
ODB22071-24HB10A	24 VDC	618
ODB22071-48HB10A	48 VDC	618
ODB22599-24HB10A	24 VDC	784
ODB22599-48HB10A	48 VDC	784
ODB250110-24HB10A	24 VDC	790
ODB250110-48HB10A	48 VDC	790



Knight OEM Manufacturing Services

Making it better for less

Knight Electronic's OEM Division provides procurement, design, manufacturing and assembly services to small, medium and large OEMs. Knight OEM manufactures electronic components, PC boards, cords, cables, extrusions, die castings, injection-molded plastics, fan assemblies and custom fan trays, subassemblies, turnkey and custom assemblies – all to your specifications. No risk, just high quality products at prices that keep OEMs competitive.



- Extrusions
- Injection Molding
- Stampings
- Electronic Components
- PC Boards (bare and populated)
- Subassemblies and Turnkey Assemblies



ORION FANS
 10557 Metric Drive
 Dallas, Texas 75243
 800-323-2439 (Toll Free)
 214-340-0265 (P)
 214-340-5870 (F)
www.orionfans.com

* Required capacitor is included with all AC motorized impellers
 DC models include PWM and Tachometer as standard features
 See website for available optional metal duct rings

All Orion blowers are designed to meet UL, cUL, TUV, VDE and CE standards
 Other blower models and configurations available upon request

Information and data is subject to change without prior notification.

Knight Electronics
 Europe Stocking Location
 Solid State Supplies

