

# Product Data Sheet

One27 Male low-profile,  
Part No. 403-52012-51

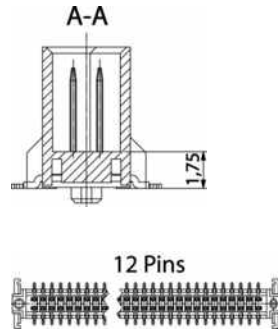
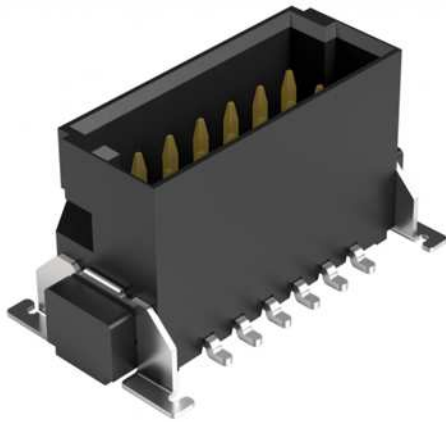


Illustration similar



Parallel



Perpendicular



SMT



Cable-to-Board



High Density



Rugged

- 12 pins
- unmated stacking height: 1.75 mm
- for board-to-board distances from 8.0 to 12.3 mm
- SMT
- pitch 1.27 mm
- Performance level 1



» to product on [www.ept.de](http://www.ept.de)



» to product group One27

# Product Data Sheet

One27 Male low-profile,  
Part No. 403-52012-51



## Technical Specifications

### Basics

No. of Contacts	12
Termination Technology	SMT
Board-to-Board Distance	8.0 mm to 12.3 mm
Operating Temperature Range	-55°C to + 125°C

### Material

Insulator Material	LCP, UL 94 V-0
CTI value <i>IEC 60112</i>	175
Contact Material	Copper alloy
Plating	Au over PdNi over Ni
Termination area	Sn over Ni

### Mechanical

Pitch	1.27 mm
Mating Force per Pin	$\leq 0.5$ N
Separating Force per Pin	$\geq 0.1$ N
Durability <i>IEC 60512-9-1</i>	Performance level 1: 500 mating cycles
Coplanarity	$\leq 0.1$ mm
Vibration, sinusoidal <i>IEC 60512-6-4</i>	10 - 2000 Hz, 20g
Contact mating problems if vibrations occur, sinusoidal <i>IEC 60512-2-5</i>	$\leq 1$ $\mu$ s
Shock, semi-sinusoidal <i>IEC 60512-6-3</i>	50g, 11 ms
Contact mating problems if shock occur, semi-sinusoidal <i>IEC 60512-2-5</i>	$\leq 1$ $\mu$ s

### Electrical

Operational Current <i>IEC 60512-5-2</i>	1.4 A at 20°C (50 pins)
Contact Resistance <i>IEC 60512-2-1</i>	$\leq 25$ m $\Omega$
Clearance and Creepage	min. 0.4 mm
Insulation Resistance <i>IEC 60512-3-1</i>	$\geq 10$ G $\Omega$
Test Voltage <i>IEC 60512-4-1</i>	500 VAC

# Product Data Sheet

One27 Male low-profile,  
Part No. 403-52012-51



---

## Technical Specifications

### Processing

---

Soldering Temperature 20 - 40 s at 260°C  
*JEDEC J-STD-020E*

MSL 1  
*JEDEC J-STD-020E*

Assembly Pick and Place

### Approval / Compliance

---

UL file E130314

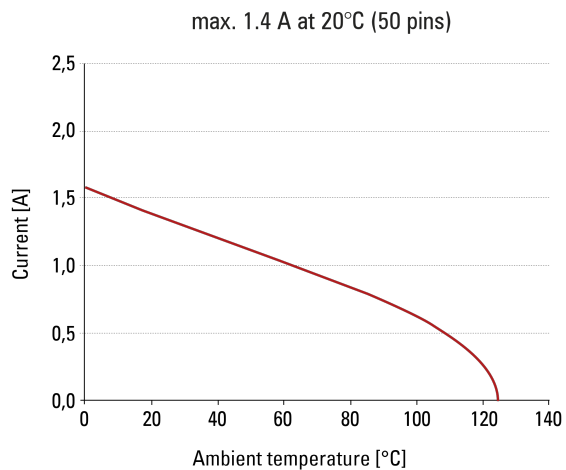
Environment RoHS compliant

# Product Data Sheet

One27 Male low-profile,  
Part No. 403-52012-51



## Derating Diagram



# Product Data Sheet

One27 Male low-profile,  
Part No. 403-52012-51

---



## Modifications

Available on request

- different number of pins
- other performance level

## Drawings

Component data in 2D and 3D format you can download here:

[» PDF](#)

[» 3D IGES](#)

[» 3D STEP](#)

[» 3D PDF](#)