



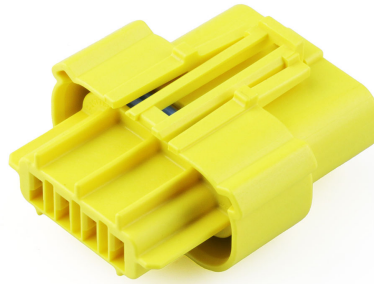
Part Number : [2077820404](#)

Product Description : Squba 3.6 Sealed Receptacle Assembly, 3.60mm Pitch, 4 Circuits, Single Row, Glow-Wire Capable, Key D, Yellow, UL1007/UL1061 Compatible

Series Number : 207782

Status : Active

Product Category : Connector Housings



Documents & Resources

Drawings

[2077820404_sd.pdf](#)

[2077820000-PK-000.pdf](#)

3D Models and Design Files

[2077820404_stp.zip](#)

Specifications


[2077760000-AS-000.pdf](#)

[2077760000-PS-000.pdf](#)

[2077760000-TS-000.pdf](#)

Product Environment Compliance

Compliance

| | |
|--------------------|---|
| GADSL/IMDS | Not Relevant |
| China RoHS |  |
| EU ELV | Not Relevant |
| Low-Halogen Status | Not Low-Halogen per IEC 61249-2-21 |
| REACH SVHC | Not Contained per D(2023)8585-DC (23 Jan 2024) |
| EU RoHS | Compliant per EU 2015/863 |

Multiple Part Product Compliance Statements

- Eu RoHS
- REACH SVHC
- Low-Halogen

Multiple Part Industry Compliance Documents

- IPC 1752A Class C
- IPC 1752A Class D
- Molex Product Compliance Declaration
- IEC-62474
- chemSHERPA (xml)

EU RoHS Certificate of Compliance

Part Details

General

| | |
|--------------|--|
| Status | Active |
| Category | Connector Housings |
| Series | 207782 |
| Description | Squba 3.6 Sealed Receptacle Assembly, 3.60mm Pitch, 4 Circuits, Single Row, Glow-Wire Capable, Key D, Yellow, UL1007/UL1061 Compatible |
| Application | Power, Signal, Wire-to-Wire |
| Product Name | Squba |
| UPC | 196823172243 |

Agency

| | |
|----|--------|
| UL | E29179 |
|----|--------|

Physical

| | |
|-----------------------|------------|
| Circuits (maximum) | 4 |
| Color - Resin | Yellow |
| Flammability | 94V-0 |
| Gender | Receptacle |
| Glow-Wire Capable | Yes |
| Keying to Mating Part | None |
| Lock to Mating Part | Yes |
| Material - Resin | Nylon |
| Net Weight | 4.809/g |
| Number of Rows | 1 |
| Packaging Type | Tray |

| | |
|-------------------------------|----------------|
| Panel Mount | No |
| Pitch - Mating Interface | 3.60mm |
| Pitch - Termination Interface | 3.60mm |
| Polarized to Mating Part | Yes |
| Temperature Range - Operating | -40° to +105°C |

Mates With / Use With

Mates with Part(s)

| Description | Part Number |
|---|-------------------|
| Squba 3.6 Sealed Plug Assembly, 3.60mm Pitch, 4 Circuits, Single Row, Glow-Wire Capable, Key D, Yellow, UL1007/UL1061 Compatible | <u>2077780404</u> |
| Squba 3.6 Sealed Plug Assembly, 3.60mm Pitch, 4 Circuits, Single Row, Glow-Wire Capable, with Clipslot, Key D, Yellow, UL1007/UL1061 Compatible | <u>2077781404</u> |

Use with Part(s)

| Description | Part Number |
|---|-------------------|
| Squba 3.6 Receptacle Terminal, Matte Tin Plating, UL1007/UL1061 Compatible, 16 AWG, Reel | <u>2077770001</u> |
| Squba 3.6 Receptacle Terminal, Matte Tin Plating, UL1007/UL1061 Compatible, 20-18 AWG, Reel | <u>2077770002</u> |