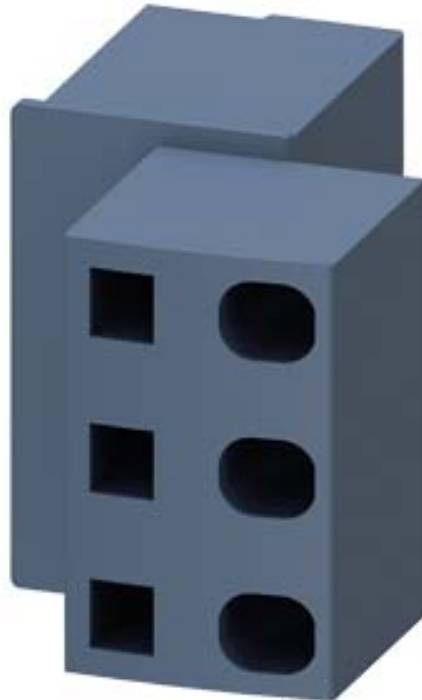


TERMINAL BLOCK 6MM² FOR CURRENT OUTPUT
AND ALSO FOR CONNECTING 3-PHASE BUSBARS



General technical data:

product brand name		SIRIUS
Product designation		Terminal block
Design of the product		for power outlet
Protection class IP on the front		IP20
Insulation voltage with degree of pollution 3 Rated value	V	500
Ambient temperature		
• during storage	°C	-50 ... +80
• during operation	°C	-20 ... +60
Ampacity maximum	A	32

Installation/ mounting/ dimensions:

Width	mm	40.4
Height	mm	34.5
Depth	mm	50

Certificates/ approvals:

Certificate of suitability		CE / UL / CSA / CCC
-----------------------------------	--	---------------------

General Product Approval	Test Certificates	Shipping Approval
---------------------------------	--------------------------	--------------------------



[Werksbescheinigung](#)

[spezielle Prüfbescheinigung](#)



Shipping Approval	other
--------------------------	--------------



[Bestätigungen](#)

other	Railway
--------------	----------------

[Umweltbestätigung](#)



[Schwingen/Schocke](#)

[n](#)

Further information

Information- and Downloadcenter (Catalogs, Brochures,...)

<http://www.siemens.com/industrial-controls/catalogs>

Industry Mall (Online ordering system)

<http://www.siemens.com/industrymall>

Cax online generator

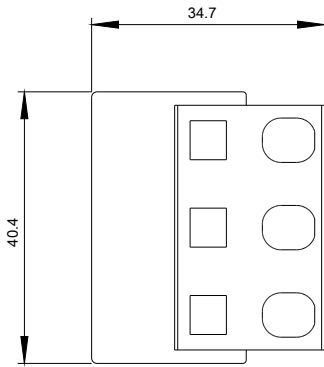
<http://support.automation.siemens.com/WW/CAXorder/default.aspx?lang=en&mfb=3RV29175D>

Service&Support (Manuals, Certificates, Characteristics, FAQs,...)

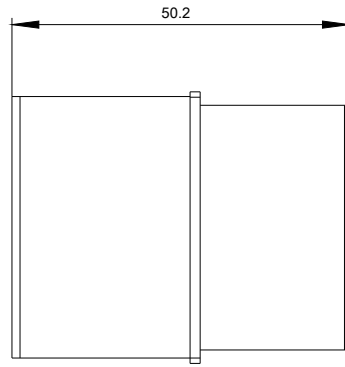
<https://support.industry.siemens.com/cs/ww/en/ps/3RV29175D>

Image database (product images, 2D dimension drawings, 3D models, device circuit diagrams, EPLAN macros, ...)

http://www.automation.siemens.com/bilddb/cax_de.aspx?mfb=3RV29175D&lang=en



last modified:



04.09.2015