



Overload relay 3...12 A Electronic For motor protection Size S0, Class 20E
 Contactor mounting Main circuit: Screw Auxiliary circuit: Screw Manual-Automatic-Reset

product brand name	SIRIUS
product designation	solid-state overload relay
product type designation	3RB3
General technical data	
size of overload relay	S0
size of contactor can be combined company-specific	S0
power loss [W] for rated value of the current at AC in hot operating state	
•	0.6 W
• per pole	0.2 W
insulation voltage with degree of pollution 3 at AC rated value	690 V
surge voltage resistance rated value	6 kV
maximum permissible voltage for protective separation in networks with grounded star point	
• between auxiliary and auxiliary circuit	300 V
• between auxiliary and auxiliary circuit	300 V
• between main and auxiliary circuit	600 V
• between main and auxiliary circuit	690 V
• shock resistance	15g / 11 ms
• shock resistance according to IEC 60068-2-27	15g / 11 ms; Signaling contact 97 / 98 in position "Tripped": 9g / 11 ms
thermal current	12 A
type of protection according to ATEX directive 2014/34/EU	Ex II (2) G [Ex e] [Ex d] [Ex px] ; Ex II (2) D [Ex t] [Ex p]
certificate of suitability according to ATEX directive 2014/34/EU	PTB 09 ATEX 3001
reference code according to IEC 81346-2	F
Substance Prohibittance (Date)	10/01/2009
SVHC substance name	Bleimonoxyd (Bleioxyd) - 1317-36-8
Ambient conditions	
installation altitude at height above sea level maximum	2 000 m
ambient temperature	
• during operation	-25 ... +60 °C
• during storage	-40 ... +80 °C
• during transport	-40 ... +80 °C
temperature compensation	-25 ... +60 °C
relative humidity during operation	10 ... 95 %
Main circuit	
number of poles for main current circuit	3
adjustable current response value current of the current-dependent overload release	3 ... 12 A
operating voltage	
• rated value	690 V

<ul style="list-style-type: none"> at AC-3e rated value maximum 	690 V
operating frequency rated value	50 ... 60 Hz
operational current rated value	12 A
operational current at AC-3e at 400 V rated value	12 A
operating power	
<ul style="list-style-type: none"> for 3-phase motors at 400 V at 50 Hz 	1.5 ... 5.5 kW
<ul style="list-style-type: none"> for AC motors at 500 V at 50 Hz 	1.5 ... 5.5 kW
<ul style="list-style-type: none"> for AC motors at 690 V at 50 Hz 	2.2 ... 7.5 kW
Auxiliary circuit	
design of the auxiliary switch	integrated
number of NC contacts for auxiliary contacts	
<ul style="list-style-type: none"> 	1
<ul style="list-style-type: none"> note 	for contactor disconnection
number of NO contacts for auxiliary contacts	
<ul style="list-style-type: none"> 	1
<ul style="list-style-type: none"> note 	for message "tripped"
number of CO contacts for auxiliary contacts	0
operational current of auxiliary contacts at AC-15	
<ul style="list-style-type: none"> at 24 V 	4 A
<ul style="list-style-type: none"> at 110 V 	4 A
<ul style="list-style-type: none"> at 120 V 	4 A
<ul style="list-style-type: none"> at 125 V 	4 A
<ul style="list-style-type: none"> at 230 V 	3 A
operational current of auxiliary contacts at DC-13	
<ul style="list-style-type: none"> at 24 V 	2 A
<ul style="list-style-type: none"> at 60 V 	0.55 A
<ul style="list-style-type: none"> at 110 V 	0.3 A
<ul style="list-style-type: none"> at 125 V 	0.3 A
<ul style="list-style-type: none"> at 220 V 	0.11 A
Protective and monitoring functions	
trip class	CLASS 20E
design of the overload release	electronic
UL/CSA ratings	
full-load current (FLA) for 3-phase AC motor	
<ul style="list-style-type: none"> at 480 V rated value 	12 A
<ul style="list-style-type: none"> at 600 V rated value 	12 A
contact rating of auxiliary contacts according to UL	B600 / R300
Short-circuit protection	
design of the fuse link	
<ul style="list-style-type: none"> for short-circuit protection of the main circuit <ul style="list-style-type: none"> with type of coordination 1 required 	gG: 63 A, RK5: 45 A
<ul style="list-style-type: none"> with type of assignment 2 required 	gG: 50 A, J: 45 A
<ul style="list-style-type: none"> for short-circuit protection of the auxiliary switch required 	fuse gG: 6 A
Installation/ mounting/ dimensions	
mounting position	any
fastening method	Contacteur mounting
height	87 mm
width	45 mm
depth	84 mm
Connections/ Terminals	
product component removable terminal for auxiliary and control circuit	Yes
type of electrical connection	
<ul style="list-style-type: none"> for main current circuit 	screw-type terminals
<ul style="list-style-type: none"> for auxiliary and control circuit 	screw-type terminals
arrangement of electrical connectors for main current circuit	Top and bottom
type of connectable conductor cross-sections for main contacts	
<ul style="list-style-type: none"> solid 	2x (1 ... 2.5 mm ²), 2x (2.5 ... 10 mm ²)
<ul style="list-style-type: none"> stranded 	2x 10 mm ²
<ul style="list-style-type: none"> solid or stranded 	1x (1 ... 10 mm ²), 2x (1 ... 10 mm ²)

<ul style="list-style-type: none"> finely stranded with core end processing 	1x (1 ... 6 mm ²), 2 x (1 ... 6 mm ²), 1x 10 mm ²
type of connectable conductor cross-sections <ul style="list-style-type: none"> for auxiliary contacts <ul style="list-style-type: none"> — solid — solid or stranded — finely stranded with core end processing for AWG cables for auxiliary contacts 	1x (0.5 ... 4 mm ²), 2x (0.5 ... 2.5 mm ²) 1x (0,5 ... 4 mm ²), 2x (0,5 ... 2,5 mm ²) 1x (0.5 ... 2.5 mm ²), 2x (0.5 ... 1.5 mm ²) 1x (20 ... 14), 2x (20 ... 14)
tightening torque <ul style="list-style-type: none"> for main contacts with screw-type terminals for auxiliary contacts with screw-type terminals 	2 ... 2.5 N-m 0.8 ... 1.2 N-m
design of screwdriver shaft	Diameter 5 to 6 mm
size of the screwdriver tip	Pozidriv PZ 2
design of the thread of the connection screw <ul style="list-style-type: none"> for main contacts of the auxiliary and control contacts 	M4 M3

Electrical Safety	
protection class IP on the front according to IEC 60529	IP20
touch protection on the front according to IEC 60529	finger-safe, for vertical contact from the front

Communication/ Protocol	
type of voltage supply via input/output link master	No

Electromagnetic compatibility	
conducted interference <ul style="list-style-type: none"> due to burst according to IEC 61000-4-4 due to conductor-earth surge according to IEC 61000-4-5 due to conductor-conductor surge according to IEC 61000-4-5 due to high-frequency radiation according to IEC 61000-4-6 	2 kV (power ports), 1 kV (signal ports) corresponds to degree of severity 3 2 kV (line to earth) corresponds to degree of severity 3 1 kV (line to line) corresponds to degree of severity 3 10 V in frequency range 0.15 to 80 MHz, modulation 80 % AM with 1 kHz
field-based interference according to IEC 61000-4-3	10 V/m
electrostatic discharge according to IEC 61000-4-2	6 kV contact discharge / 8 kV air discharge

Display	
display version for switching status	Slide switch

Approvals Certificates	
General Product Approval	



[Confirmation](#)



General Product Approval	EMV	For use in hazardous locations	Test Certificates
---------------------------------	------------	---------------------------------------	--------------------------



[KC](#)



[Type Test Certificates/Test Report](#)

[Special Test Certificate](#)

Marine / Shipping					
--------------------------	--	--	--	--	--



other

[Confirmation](#)

Further information

Information on the packaging

<https://support.industry.siemens.com/cs/ww/en/view/109813875>

Information- and Downloadcenter (Catalogs, Brochures,...)

<https://www.siemens.com/ic10>

Industry Mall (Online ordering system)

<https://mall.industry.siemens.com/mall/en/en/Catalog/product?mlfb=3RB3026-2SB0>

Cax online generator

<http://support.automation.siemens.com/WW/CAXorder/default.aspx?lang=en&mlfb=3RB3026-2SB0>

Service&Support (Manuals, Certificates, Characteristics, FAQs,...)

<https://support.industry.siemens.com/cs/ww/en/ps/3RB3026-2SB0>

Image database (product images, 2D dimension drawings, 3D models, device circuit diagrams, EPLAN macros, ...)

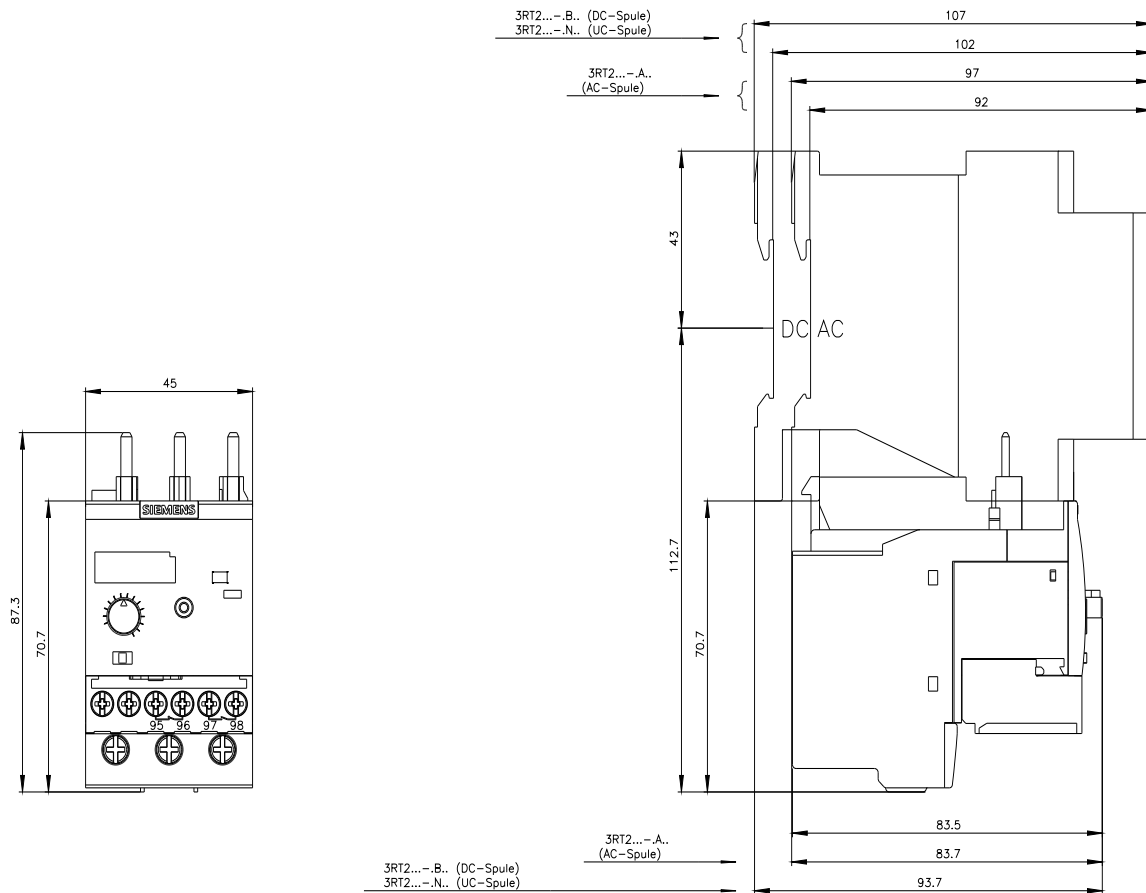
http://www.automation.siemens.com/bilddb/cax_de.aspx?mlfb=3RB3026-2SB0&lang=en

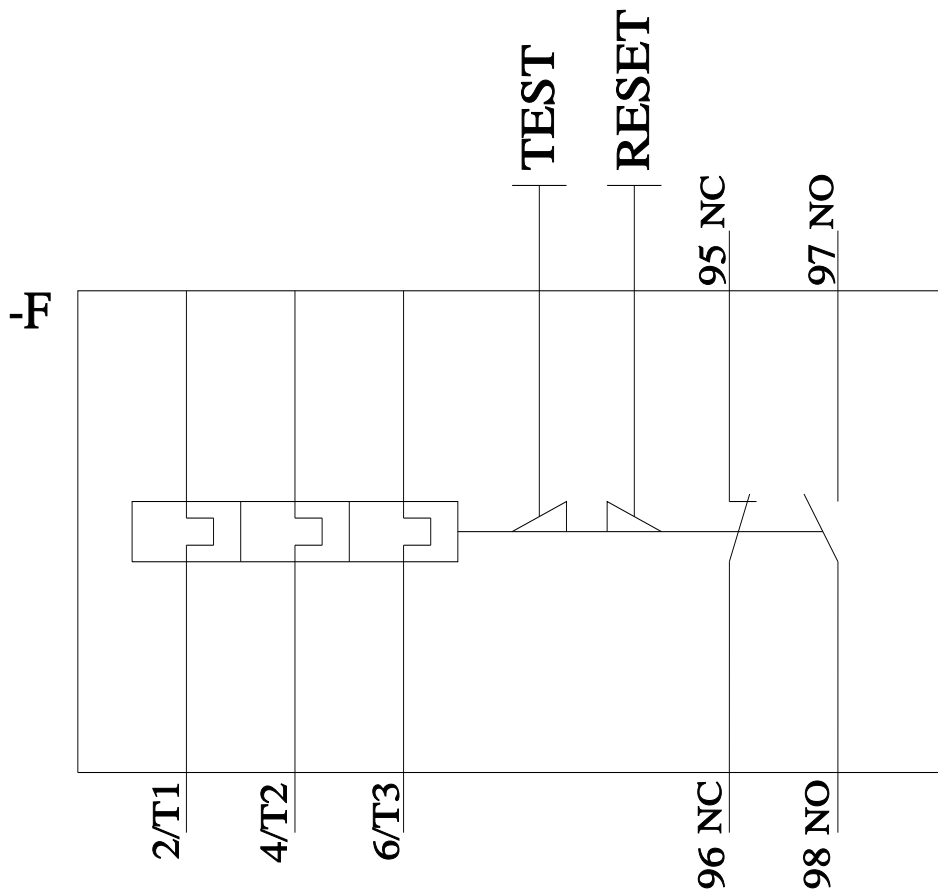
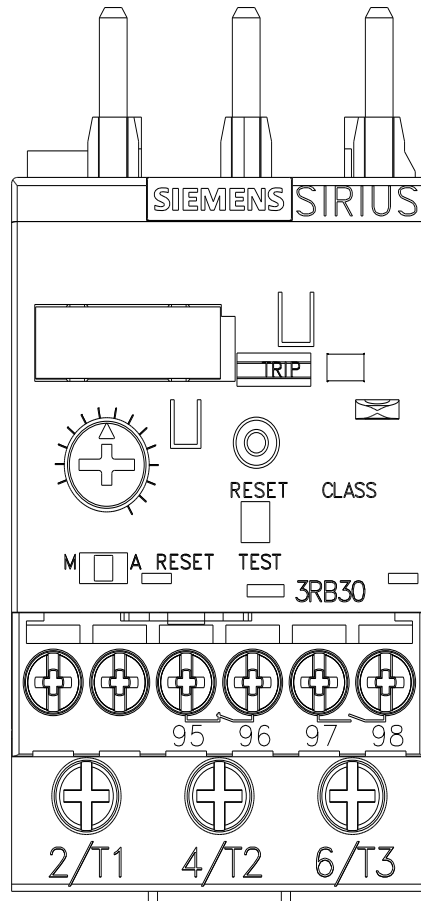
Characteristic: Tripping characteristics, I²t, Let-through current

<https://support.industry.siemens.com/cs/ww/en/ps/3RB3026-2SB0/char>

Further characteristics (e.g. electrical endurance, switching frequency)

<http://www.automation.siemens.com/bilddb/index.aspx?view=Search&mlfb=3RB3026-2SB0&objecttype=14&gridview=view1>





last modified:

9/5/2023