

SETRON, Switch disconnecter 3LD, emergency switching-off switch, 3- pole, Iu: 32 A, operating power / at AC-23 A 400 V: 11.5 kW, front-mounted, knob-operated mechanism, red/yellow, 4-hole mounting of the handle



Model	
Product brand name	SETRON
Product designation	3LD Switch disconnecter
Design of the product	EMERGENCY-STOP switch
Display version / for switch position indicator manual operation	1 ON - 0 OFF
Design of the operating mechanism	selector switch
Design of handle	knob-operated mechanism, red/yellow
Type of the driving mechanism / motor drive	No

General technical data	
Number of poles	3
Type of device	fixed mounting
Type of switch	front mounted
Size of switch disconnecter	2
Electrical endurance (switching cycles)	6 000
<ul style="list-style-type: none"> at AC-23 A / at 690 V 	
I2t value / with closed switch / at 690 V / for combination switch + gG fuse / maximum	9 kA2.s

Let-through I _{2t} value / with closed switch / at 440 V / for combination switch + gG fuse / maximum	9 kA ² .s
Mechanical service life (switching cycles) / typical	100 000
Operating frequency / maximum	50 1/h

Voltage

Insulation voltage / rated value	690 V
Surge voltage resistance / rated value	6 kV
Operating current / at AC / rated value	32 A
Operating voltage	
<ul style="list-style-type: none"> at AC / at 50/60 Hz / rated value 	690 V

Protection class

Protection class IP	IP65
Degree of protection NEMA rating	1, 3R, 4X, 12
Protection class IP / on the front	IP65

Dissipation

Power loss [W]	
<ul style="list-style-type: none"> for rated value of the current / at AC / in hot operating state / per pole 	1.8 W
<ul style="list-style-type: none"> per conductor / typical 	1.8 W

Current

Operating current	
<ul style="list-style-type: none"> at AC-23 A / at 690 V / rated value 	13 A
<ul style="list-style-type: none"> at AC-23 A / at 400 V / rated value 	22 A
<ul style="list-style-type: none"> at AC-22 A / at 690 V / rated value 	32 A
<ul style="list-style-type: none"> at AC-21 / at 690 V / rated value 	32 A
<ul style="list-style-type: none"> at AC-21 A / at 240 V / rated value 	32 A
<ul style="list-style-type: none"> at AC-21 A / at 440 V / rated value 	32 A
<ul style="list-style-type: none"> at AC-22 A / at 240 V / rated value 	32 A
<ul style="list-style-type: none"> at AC-22 A / at 440 V / rated value 	32 A
<ul style="list-style-type: none"> at AC-23 A / at 240 V / rated value 	22 A
<ul style="list-style-type: none"> at AC-23 A / at 440 V / rated value 	22 A
Operating current / of upstream fuse / rated value	40 A
Let-through current / with closed switch	
<ul style="list-style-type: none"> at 440 V / for combination switch + gG fuse / maximum 	4.5 kA
<ul style="list-style-type: none"> at 690 V / for combination switch + gG fuse / maximum permissible 	4.5 kA
Short-time withstand current (I _{cw})	
<ul style="list-style-type: none"> limited to 1 s / rated value 	640 A
<ul style="list-style-type: none"> at 690 V / limited to 1 s / rated value 	640 A

Main circuit

Operating frequency	
<ul style="list-style-type: none"> • initial value • Full-scale value 	<p>50 Hz</p> <p>60 Hz</p>
Operating power	
<ul style="list-style-type: none"> • at AC-23 A / at 240 V / rated value • at AC-23 A / at 400 V / at 50/60 Hz / rated value • at AC-23 A / at 400 V / rated value • at AC-23 A / at 440 V / rated value • at AC-23 A / at 690 V / rated value • at AC-3 / at 240 V / rated value • at AC-3 / at 400 V / rated value • at AC-3 / at 690 V / rated value 	<p>6 kW</p> <p>11.5 kW</p> <p>11.5 kW</p> <p>11.5 kW</p> <p>11.5 kW</p> <p>5.5 kW</p> <p>9.5 kW</p> <p>9.5 kW</p>
Operating current / rated value	32 A

Auxiliary circuit	
Number of CO contacts / for auxiliary contacts	0
Number of NC contacts / for auxiliary contacts	0
Number of NO contacts / for auxiliary contacts	0
Operating voltage / of auxiliary contacts / at AC / maximum	500 V
Continuous current / of the auxiliary contact / rated value	10 A
Insulation voltage / of the auxiliary switch / rated value	500 V

Suitability	
Suitability for use	
<ul style="list-style-type: none"> • Main switch • switch disconnecter • EMERGENCY OFF switch • safety switch • maintenance/repair switch 	<p>Yes</p> <p>Yes</p> <p>Yes</p> <p>Yes</p> <p>Yes</p>

Appearance	
Color / of the actuating element	red

Product details	
<ul style="list-style-type: none"> • Product function / can be locked into OFF position 	Yes
Number of bracket locks / maximum	2
Hasp thickness / of the bracket locks / minimum	4 mm
Hasp thickness / of the bracket locks / maximum	6 mm
Product extension / optional	
<ul style="list-style-type: none"> • motor drive • Voltage trigger 	<p>No</p> <p>No</p>

Short circuit

Conditional short-circuit current / with line-side fuse protection	
• at 690 V / by gG fuse / rated value	50 kA

according UL

Operating current / at AC / acc. to UL 508 / rated value	32 A
Operating voltage / at AC / at 50/60 Hz / acc. to UL 508 / rated value	600 V
Active power [hp] / at AC / at 480 V / acc. to UL 508 / rated value	20
Active power [hp] / at AC / at 600 V / acc. to UL 508 / rated value	20
Short-time withstand current (SCCR) / at 600 V / acc. to UL 508	5 kA
Continuous current / of upstream fuse / according to UL / rated value	80 A
Type of fuse / according to UL	RK5

Number

Number of connectable NC contacts / for auxiliary contacts / attachable / maximum	3
Number of connectable NO contacts / for auxiliary contacts / attachable / maximum	3
Number of connectable CO contacts / for auxiliary contacts / attachable / maximum	0

Connections

AWG number / as coded connectable conductor cross section / solid	
• maximum	8
• minimum	14
Type of connectable conductor cross-sections / for copper conductor	
• solid	1x (1,5...16mm ²)
• finely stranded / with core end processing	1x (1,5...10mm ²)
• stranded	1x (1,5...16mm ²)
Type of connectable conductor cross-sections / for auxiliary contacts	
• solid	lateral auxiliary switch 2x (0,75 ... 2,5mm ²), 1x 4mm ² ; front auxiliary switch 1x (0,75 ... 2,5mm ²)
• finely stranded / with core end processing	lateral auxiliary switch 2x (0,75 ... 1,5mm ²), 1x 2,5mm ² ; front auxiliary switch 1x 2,5mm ²
• stranded	lateral auxiliary switch 2x (0,75 ... 2,5mm ²), 1x 4mm ² ; front auxiliary switch 1x (0,75 ... 2,5mm ²)
Type of electrical connection	

- for main current circuit
- for auxiliary contacts

box terminal
connection terminals

Requirements

Design of the fuse link

- for short-circuit protection of the main circuit / required
- for short-circuit protection of the auxiliary switch / required

fuse gL/gG: 40 A

fuse gL/gG: 10 A

Mechanical Design

Height

71 mm

Width

49 mm

Depth

85.5 mm

Mounting type

Built-in unit fixed-mounted version

Mounting type

- front mounting with 4-hole attachment
- front mounting with central attachment
- rail mounting

Yes

No

No

Net weight

178 g

Environmental conditions

Ambient temperature / during operation

- minimum
- maximum

-25 °C

55 °C

Ambient temperature / during storage / minimum

-25 °C

Certificates

Reference code

- acc. to DIN EN 61346-2
- acc. to DIN EN 81346-2

S

SF

General Product Approval

Declaration of Conformity



CCC



CSA



UL



VDE

[Miscellaneous](#)



EG-Konf.

Test Certificates

Shipping Approval

other

[Special Test Certificate](#)



LRS



PRS

[Environmental Conformations](#)

Further information

Information- and Downloadcenter (Catalogs, Brochures,...)

<http://www.siemens.com/lowvoltage/catalogs>

Industry Mall (Online ordering system)

<https://mall.industry.siemens.com/mall/en/en/Catalog/product?mfb=3LD2222-0TK13>

Service&Support (Manuals, Certificates, Characteristics, FAQs,...)

<https://support.industry.siemens.com/cs/ww/en/ps/3LD2222-0TK13>

Image database (product images, 2D dimension drawings, 3D models, device circuit diagrams, ...)

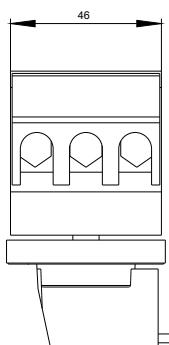
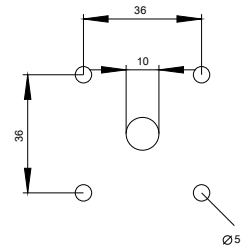
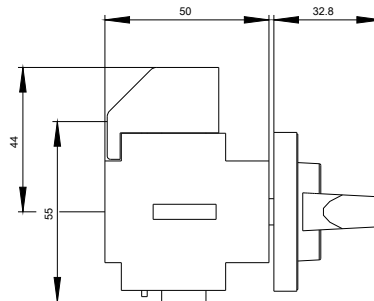
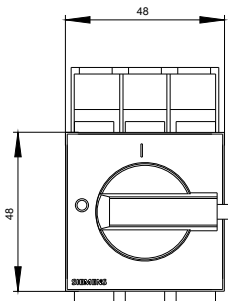
http://www.automation.siemens.com/bilddb/cax_en.aspx?mfb=3LD2222-0TK13

CAX-Online-Generator

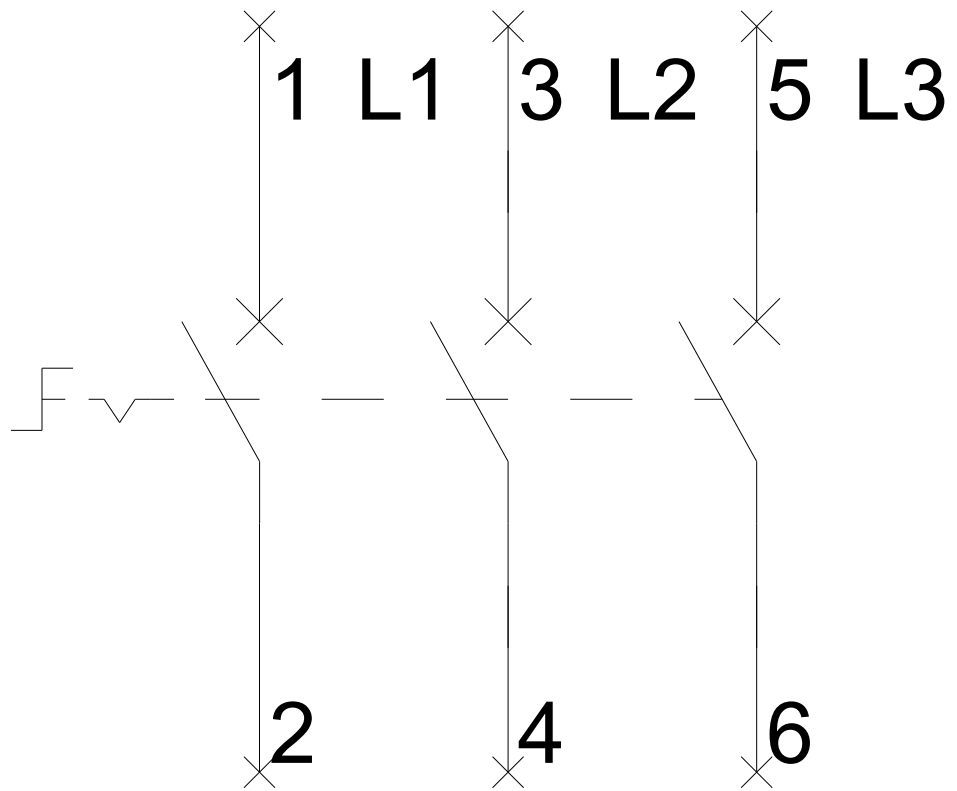
<http://www.siemens.com/cax>

Tender specifications

<http://www.siemens.com/specifications>



-Q1



-CI

