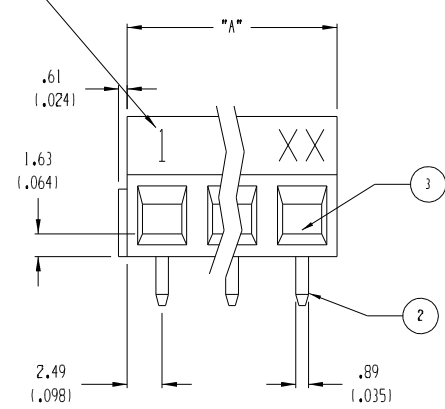
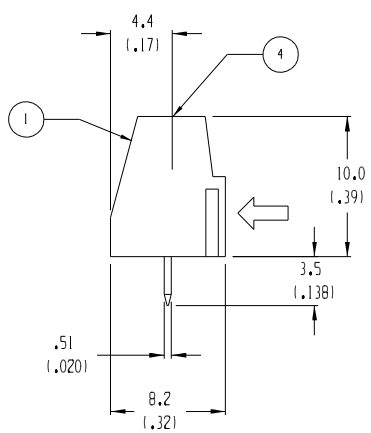
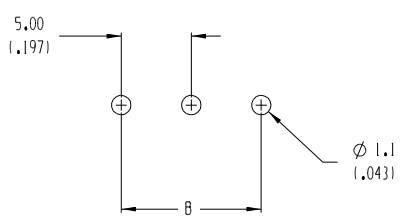


3 CIRCUIT SHOWN

IMPRINT 1.8 (.07)
AS SHOWN



MATERIAL NO.	MATERIAL NO. (GREEN)	MATERIAL NO. (BLACK)	NO. OF CIRCUITS "XX"	DIM. "A"	DIM. "B"
398990024	398904302	398900302	02	10.0 1.391	5.00 1.1971
398990026	398904303	398900303	03	15.0 1.591	10.00 1.3941
398990027	398904304	398900304	04	20.0 1.791	15.00 1.5911
398990028	398904305	398900305	05	25.0 1.981	20.00 1.7871
	398904306	398900306	06	30.0 1.1181	25.00 1.9841
	398904307	398900307	07	35.0 1.1381	30.00 1.1811
	398904308	398900308	08	40.0 1.1571	35.00 1.13781
	398904309	398900309	09	45.0 1.1771	40.00 1.15751
	398904310	398900310	10	50.0 1.1971	45.00 1.17721
	398904311	398900311	11	55.0 1.2171	50.00 1.19691
	398904312	398900312	12	60.0 1.2361	55.00 1.21651
	398904313	398900313	13	65.0 1.2561	60.00 1.23621
	398904314	398900314	14	70.0 1.2761	65.00 1.25591
	398904315	398900315	15	75.0 1.2951	70.00 1.27561
	398904316	398900316	16	80.0 1.3151	75.00 1.29531
	398904317	398900317	17	85.0 1.3351	80.00 1.31501
	398904318	398900318	18	90.0 1.3541	85.00 1.33461
	398904319	398900319	19	95.0 1.3741	90.00 1.35431
	398904320	398900320	20	100.0 1.3941	95.00 1.37401
	398904321	398900321	21	105.0 1.4131	100.00 1.39371
	398904322	398900322	22	110.0 1.4331	105.00 1.41341
	398904323	398900323	23	115.0 1.4531	110.00 1.43311
	398904324	398900324	24	120.0 1.4721	115.00 1.45281
	398904325	398900325	25	125.0 1.4921	120.00 1.47241



- NOTES:
1. MATERIAL: SEE TABLE
 2. FINISHES: SEE TABLE
 3. PRODUCT SPECIFICATION: NOT REQUIRED
 4. PACKAGING: NOT REQUIRED
 5. MATES WITH: NONE

ITEM	QTY.	DESCRIPTION	MATERIAL	FINISH
4	XX	SCREW, M3	COPPER	NICKEL
3	XX	CAGE CLAMP	COPPER	NICKEL
2	XX	TERMINAL, PC	COPPER	HOT TIN DIP
1	I	INSULATOR	POLYAMIDE	BLACK

EC NO. 4242 DRAWN: CH'K: RK 9-26-05 APPR:	QUALITY SYMBOLS MAJOR: CRITICAL: SPC: S:	GENERAL TOLERANCES: (UNLESS SPECIFIED) 4 PLACES mm ±.0015 INCH ±.0015 3 PLACES mm ±.038 INCH ±.005 2 PLACES mm ±.13 INCH ±.01 1 PLACE mm ±.3 INCH	SCALE 3:1 DESIGN UNITS <input type="checkbox"/> mm <input checked="" type="checkbox"/> INCH THIRD ANGLE PROJECTION	DRAWN BY & DATE: R. KEMP 5-14-02 CHECKED BY & DATE: R. STONE 5-14-02 APPROVED BY & DATE: P. WALTZ 5-14-02	PROJECT NO. 04-124 DIMENSIONS: <input checked="" type="checkbox"/> mm <input type="checkbox"/> INCH <input type="checkbox"/> mm ONLY SHT REV REVISION ON CAD ONLY
	CAD FILENAME: 8901XX.PRT MATERIAL NO.: SEE CHART DRAWING NO.: SD-39890-003 SHEET NO.: 1 OF 1	TITLE: 5.00mm EUROSTYLE LOW, SINGLE ROW FIXED BLOCK MOLEX INCORPORATED	THIS DRAWING CONTAINS INFORMATION THAT IS PROPRIETARY TO MOLEX INCORPORATED AND SHOULD NOT BE USED WITHOUT WRITTEN PERMISSION.	SIZE B	
	DRAFT WHERE APPLICABLE MUST REMAIN WITHIN DIMENSIONS				ANGLE: ±2°
	EC NO. 4242 DRAWN: CH'K: RK 9-26-05 APPR:				REV DESCRIPTION