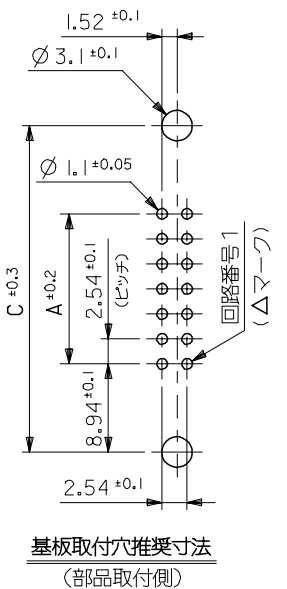
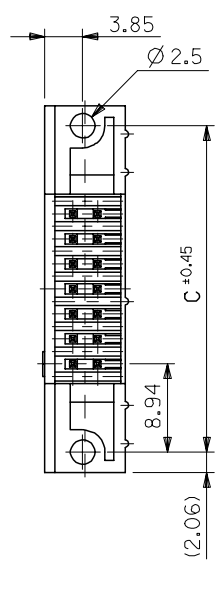
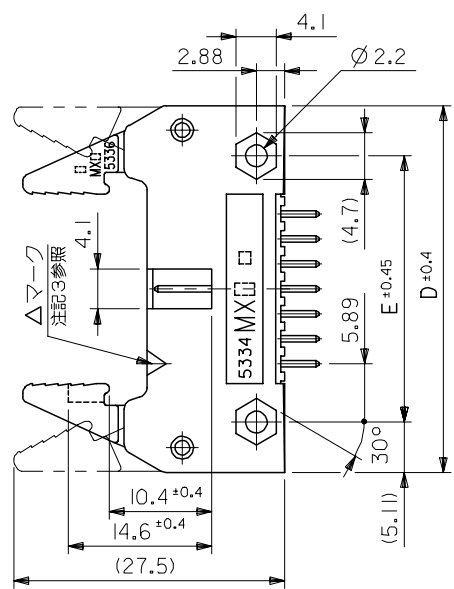
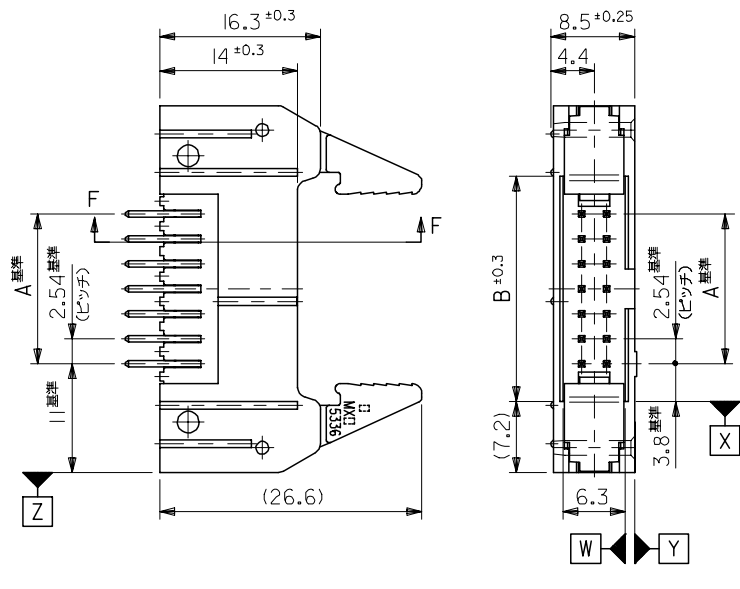




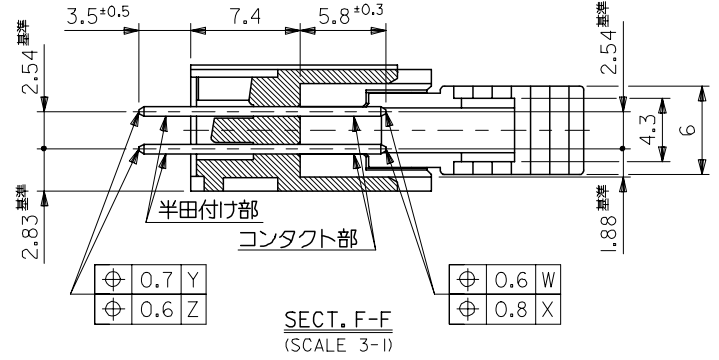
	10	9	8	7	6	5	4	3	2	1
F										
E										
D										
C										
B	78.74 (3.100)	86.34 (3.400)	96.62 (3.804)	100.74 (3.966)	90.52 (3.564)	64				
	73.66 (2.900)	81.26 (3.200)	91.54 (3.604)	95.66 (3.766)	85.44 (3.364)	60				
	60.96 (2.400)	68.56 (2.700)	78.84 (3.104)	82.96 (3.266)	72.74 (2.864)	50				
	48.26 (1.900)	55.86 (2.200)	66.14 (2.604)	70.26 (2.766)	60.04 (2.364)	40				
	40.64 (1.600)	48.24 (1.900)	58.52 (2.304)	62.64 (2.466)	52.42 (2.064)	34				
	35.56 (1.400)	43.16 (1.700)	53.44 (2.104)	57.56 (2.266)	47.34 (1.864)	30				
	30.48 (1.200)	38.08 (1.500)	48.36 (1.904)	52.48 (2.066)	42.26 (1.664)	26				
	22.86 (.900)	30.46 (1.200)	40.74 (1.604)	44.86 (1.766)	34.64 (1.364)	20				
	17.78 (.700)	25.38 (1.000)	35.66 (1.404)	39.78 (1.566)	29.56 (1.164)	16				
A	15.24 (.600)	22.84 (.900)	33.12 (1.304)	37.24 (1.466)	27.02 (1.064)	14				
	10.16 (.400)	17.76 (.700)	28.04 (1.104)	32.16 (1.266)	21.94 (.864)	10				
	DIM. A	DIM. B	DIM. C	DIM. D	DIM. E	NO. OF CKTS.				

39-53-6640	5330-64BGS47F	39-53-3646	5330-64BGS37F	39-53-5649	5330-64BGS27F	39-35-2646	5330-64BGS17F	64
▲ -6600	▲ -60BGS47F	▲ -3606	▲ -60BGS37F	▲ -5609	▲ -60BGS27F	▲ -2606	▲ -60BGS17F	60
▲ -6500	▲ -50BGS47F	▲ -3506	▲ -50BGS37F	▲ -5509	▲ -50BGS27F	▲ -2506	▲ -50BGS17F	50
▲ -6400	▲ -40BGS47F	▲ -3406	▲ -40BGS37F	▲ -5409	▲ -40BGS27F	▲ -2406	▲ -40BGS17F	40
▲ -6340	▲ -34BGS47F	▲ -3346	▲ -34BGS37F	▲ -5349	▲ -34BGS27F	▲ -2346	▲ -34BGS17F	34
▲ -6300	▲ -30BGS47F	▲ -3306	▲ -30BGS37F	▲ -5309	▲ -30BGS27F	▲ -6306	▲ -30BGS17F	30
▲ -6260	▲ -26BGS47F	▲ -3266	▲ -26BGS37F	▲ -5269	▲ -26BGS27F	▲ -2266	▲ -26BGS17F	26
▲ -6200	▲ -20BGS47F	▲ -3206	▲ -20BGS37F	▲ -5209	▲ -20BGS27F	▲ -2206	▲ -20BGS17F	20
▲ -6160	▲ -16BGS47F	▲ -6166	▲ -16BGS37F	▲ -5169	▲ -16BGS27F	▲ -2166	▲ -16BGS17F	16
▼ -6140	▼ -14BGS47F	▼ -3146	▼ -14BGS37F	▼ -5149	▼ -14BGS27F	▼ -2146	▼ -14BGS17F	14
39-53-6100	5330-10BGS47F	39-53-3106	5330-10BGS37F	39-53-5109	5330-10BGS27F	39-35-2106	5330-10BGS17F	10
EDP. NO.	ENG. NO.	EDP. NO.	ENG. NO.	EDP. NO.	ENG. NO.	EDP. NO.	ENG. NO.	NO. OF CKTS.
5330-NBGS47F-LEAD FREE-		5330-NBGS37F-LEAD FREE-		5330-NBGS27F-LEAD FREE-		5330-NBGS17F-LEAD FREE-		

REVISED EC NO: J2006-0712 DRWN: YANAGI MOTO 2005/10/03 CHKD: TANAKA 2005/10/06 APPR: NUKITA 2005/10/14	GENERAL TOLERANCES (UNLESS SPECIFIED)		DIMENSION STYLE MM ONLY		SCALE 2:1	DESIGN UNITS METRIC	THIRD ANGLE PROJECTION		
	10 UNDER	± 0.2	DRAWN BY NNAGATA		DATE 2004/03/03		TITLE QIK FLECS HEADER ASSY ST WITH EJECT LEVER -LEAD FREE-		
	10 OVER 30 UNDER	± 0.25	CHECKED BY KTOJO		DATE 2004/03/03		MOLEX INCORPORATED		
	30 OVER	± 0.3	APPROVED BY MSASAO		DATE 2004/03/03		DOCUMENT NO. SD-5330-001		
	ANGULAR	± 3 °	MATERIAL NO. SEE CHART		SHEET NO. 2 OF 2				
DRAFT WHERE APPLICABLE MUST REMAIN WITHIN DIMENSIONS		SIZE A3		THIS DRAWING CONTAINS INFORMATION THAT IS PROPRIETARY TO MOLEX INCORPORATED AND SHOULD NOT BE USED WITHOUT WRITTEN PERMISSION					

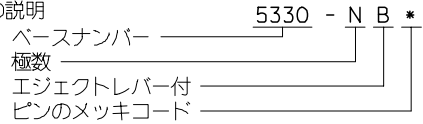


基板取付穴推奨寸法  
(部品取付側)



SECT. F-F  
(SCALE 3-1)

- 注記 1. 材料 ヘッダー&エジェクトレバー : ガラス繊維 15% 入り PBTP (UL94V-0), 黒色  
 ビン : 黄銅, サイズ  $\square 0.635$   
 スプリングピン : 鋼製
2. 嵌合相手 : 5320 シリーズ
3. 使用符号の説明



コード:*	△マークの色	コンタクト部	半田付け部	下地メッキ
LEAD-FREE G3	緑	金 0.25 $\mu$ m MIN.		
GS1	黄	金 0.1 $\mu$ m MIN.	半田 3 $\mu$ m MIN.	ニッケル 1 $\mu$ m MIN.
LEAD-FREE GS17F	黄	金 0.1 $\mu$ m MIN.	錫 1 $\mu$ m MIN.	
LEAD-FREE T2	黒	錫 1 $\mu$ m MIN.		ニッケル 0.5 $\mu$ m MIN.

60	73.66	81.26	91.54	95.66	85.44
50	60.96	68.56	78.84	82.96	72.74
40	48.26	55.86	66.14	70.26	60.04
34	40.64	48.24	58.52	62.64	52.42
30	35.56	43.16	53.44	57.56	47.34
26	30.48	38.08	48.36	52.48	42.26
20	22.86	30.46	40.74	44.86	34.64
16	17.78	25.38	35.66	39.78	29.56
14	15.24	22.84	33.12	37.24	27.02
10	10.16	17.76	28.04	32.16	21.94
極数	A 寸法	B 寸法	C 寸法	D 寸法	E 寸法

REVISED EC NO: J2006-0712 DRW: YANAGI MOTO 2005/10/03 CHK: D. TANAKA 2005/10/06 APPR: NUKITA 2005/10/14	GENERAL TOLERANCES (UNLESS SPECIFIED)		DIMENSION STYLE MM ONLY		SCALE 2:1	DESIGN UNITS METRIC	THIRD ANGLE PROJECTION
	10 UNDER	±0.2	DRAWN BY H. HIRAMOTO	DATE 1990/06/18	TITLE QIK FLECS HEADER ASSY ST WITH EJECT LEVER JAPANESE ONLY		
	10 OVER 30 UNDER	±0.25	CHECKED BY M. SASAO	DATE	MOLEX MOLEX INCORPORATED		
	30 OVER	±0.3	APPROVED BY H. IKESUGI	DATE	DOCUMENT NO. SD-5330-002		
	ANGULAR	±3°	MATERIAL NO. SEE SHEET 2 OF 2		SHEET NO. 1 OF 2		
DRAFT WHERE APPLICABLE MUST REMAIN WITHIN DIMENSIONS		THIS DRAWING CONTAINS INFORMATION THAT IS PROPRIETARY TO MOLEX INCORPORATED AND SHOULD NOT BE USED WITHOUT WRITTEN PERMISSION					

10 9 8 7 6 5 4 3 2 1

F

F

E

E

D

D

C

C

B

B

A

A

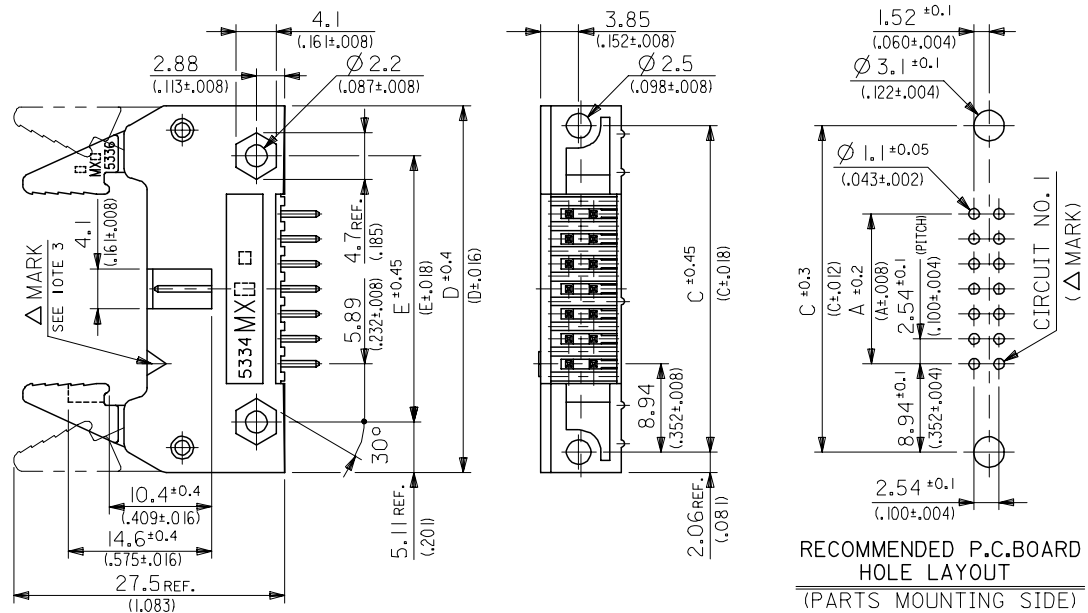
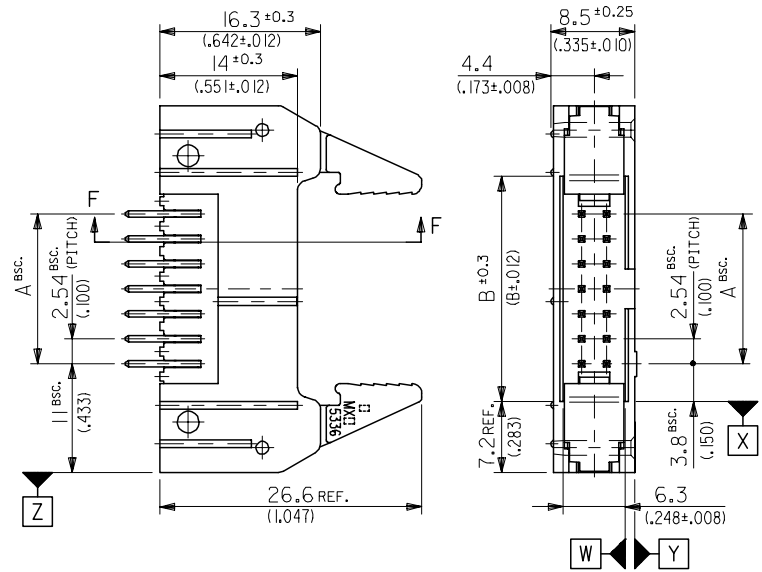
		60
39-28-5500	5330-50BT2	50
▲ -5400	▲ -40BT2	40
-5340	-34BT2	34
-5300	-30BT2	30
-5260	-26BT2	26
-5200	-20BT2	20
-5160	-16BT2	16
▼ -5140	▼ -14BT2	14
39-28-5100	5330-10BT2	10

EDP NO.	ENG. NO.	極 数
5330-NBT2	-LEAD FREE-	
39-26-6606	5330-60BGS1	60
▲ -6506	▲ -50BGS1	50
-6406	-40BGS1	40
-6346	-34BGS1	34
-6306	-30BGS1	30
-6266	-26BGS1	26
-6206	-20BGS1	20
-6166	-16BGS1	16
▼ -6146	▼ -14BGS1	14
39-26-6106	5330-10BGS1	10
EDP NO.	ENG. NO.	極 数
5330-NBGS1		

39-35-2606	5330-60BGS17F	39-26-1605	5330-60BG3	60
▲ -2506	▲ -50BGS17F	▲ -1505	▲ -50BG3	50
-2406	-40BGS17F	-1405	-40BG3	40
-2346	-34BGS17F	-1345	-34BG3	34
-2306	-30BGS17F	-1305	-30BG3	30
-2266	-26BGS17F	-1265	-26BG3	26
-2206	-20BGS17F	-1205	-20BG3	20
-2166	-16BGS17F	-1165	-16BG3	16
▼ -2146	▼ -14BGS17F	▼ -1145	▼ -14BG3	14
39-35-2106	5330-10BGS17F	39-26-1105	5330-10BG3	10
EDP NO.	ENG. NO.	EDP NO.	ENG. NO.	極 数
5330-NBGS17F	-LEAD FREE-	5330-NBG3	-LEAD FREE-	

REVISED EC NO: J2006-0712 DRW: YANAGI MOTO 2005/10/03 CHK: M. TANAKA 2005/10/06 APP: NUKITA 2005/10/14	DESCRIPTION REV	GENERAL TOLERANCES (UNLESS SPECIFIED)		DIMENSION STYLE MM ONLY		SCALE 2:1	DESIGN UNITS METRIC	THIRD ANGLE PROJECTION		
		10 UNDER	± 0.2	DRAWN BY H. HIRAMOTO	DATE 1990/06/18	TITLE QIK FLECS HEADER ASSY ST WITH EJECT LEVER JAPANESE ONLY				
		10 OVER 30 UNDER	± 0.25	CHECKED BY M. SASAO	DATE	MOLEX MOLEX INCORPORATED				
		30 OVER	± 0.3	APPROVED BY H. IKESUGI	DATE	DOCUMENT NO. SD-5330-002				
		ANGULAR ± 3 °		MATERIAL NO.		SHEET NO. 2 OF 2				
DRAFT WHERE APPLICABLE MUST REMAIN WITHIN DIMENSIONS		SIZE A3	THIS DRAWING CONTAINS INFORMATION THAT IS PROPRIETARY TO MOLEX INCORPORATED AND SHOULD NOT BE USED WITHOUT WRITTEN PERMISSION							

10 9 8 7 6 5 4 3 2 1



RECOMMENDED P.C. BOARD HOLE LAYOUT (PARTS MOUNTING SIDE)

NOTES 1. MATERIAL HEADER & EJECT LEVER : G.F. 15% PBTP (UL94V-0), COLOR---BLACK  
 PINS : BRASS, SIZE--- $\square$ 0.635(.025 SQ.)  
 SPRING PIN : STEEL  
 2. MATES WITH MOLEX CONNECTOR SERIES OF 5320.  
 3. LEGEND

5330 - N B \*  
 BASE NUMBER \_\_\_\_\_  
 CIRCUIT SIZE \_\_\_\_\_  
 WITH EJECT LEVER \_\_\_\_\_  
 PLATING CODE OF PIN \_\_\_\_\_

CODE:*	△ MARK COLOR	CONTACT AREA	SOLDER AREA	UNDER PLATE
LEAD-FREE G3	GREEN	GOLD 0.25 $\mu$ m(.00001) MIN.		
GS1	YELLOW	GOLD 0.1 $\mu$ m(.000004) MIN.	TIN-LEAD 3 $\mu$ m(.00012) MIN.	NICKEL 1 $\mu$ m(.00004) MIN.
GS2	BROWN	GOLD 0.76 $\mu$ m(.0000304) MIN.		
LEAD-FREE GS17F	YELLOW	GOLD 0.1 $\mu$ m(.000004) MIN.	TIN 1 $\mu$ m(.00004) MIN.	
LEAD-FREE GS37F	BROWN	GOLD 0.76 $\mu$ m(.0000304) MIN.		
LEAD-FREE T2	BLACK	TIN 1 $\mu$ m(.00004) MIN.		NICKEL 0.5 $\mu$ m(.00002) MIN.

64	78.74 (3.100)	86.34 (3.400)	96.62 (3.804)	100.74 (3.966)	90.52 (3.564)
60	73.66 (2.900)	81.26 (3.200)	91.54 (3.604)	95.66 (3.766)	85.44 (3.364)
50	60.96 (2.400)	68.56 (2.700)	78.84 (3.104)	82.96 (3.266)	72.74 (2.864)
40	48.26 (1.900)	55.86 (2.200)	66.14 (2.604)	70.26 (2.766)	60.04 (2.364)
34	40.64 (1.600)	48.24 (1.900)	58.52 (2.304)	62.64 (2.466)	52.42 (2.064)
30	35.56 (1.400)	43.16 (1.700)	53.44 (2.104)	57.56 (2.266)	47.34 (1.864)
26	30.48 (1.200)	38.08 (1.500)	48.36 (1.904)	52.48 (2.066)	42.26 (1.664)
20	22.86 (900)	30.46 (1.200)	40.74 (1.604)	44.86 (1.766)	34.64 (1.364)
16	17.78 (700)	25.38 (1.000)	35.66 (1.404)	39.78 (1.566)	29.56 (1.164)
14	15.24 (600)	22.84 (900)	33.12 (1.304)	37.24 (1.466)	27.02 (1.064)
10	10.16 (400)	17.76 (700)	28.04 (1.104)	32.16 (1.266)	21.94 (.864)
NO. OF CKTS.	DIM. A	DIM. B	DIM. C	DIM. D	DIM. E

SECT. F-F (SCALE 3-1)

REVISED EC NO: J2006-0712 DR: N. VANAGI MOTO 2005/10/03 CHKD: M. TANAKA 2005/10/06 APPR: N. KUKITA 2005/10/14	GENERAL TOLERANCES (UNLESS SPECIFIED)	DIMENSION STYLE MM/IN	SCALE 2:1	DESIGN UNITS METRIC	THIRD ANGLE PROJECTION
	10 UNDER ±0.2	DRAWN BY H. HIRAMOTO	DATE 1989/11/10	TITLE QIK FLECS HEADER ASSY ST WITH EJECT LEVER ENGLISH ONLY	
	10 OVER 30 UNDER ±0.25	CHECKED BY M. TOMITA	DATE 2003/06/13	MOLEX MOLEX INCORPORATED	
	30 OVER ±0.3	APPROVED BY M. YOMITA	DATE 2003/06/13	DOCUMENT NO. SD-5330-003	SHEET NO. 1 OF 2
ANGULAR ±3°	DRAFT WHERE APPLICABLE MUST REMAIN WITHIN DIMENSIONS		SEE SHEET 2 OF 2		
J	THIS DRAWING CONTAINS INFORMATION THAT IS PROPRIETARY TO MOLEX INCORPORATED AND SHOULD NOT BE USED WITHOUT WRITTEN PERMISSION				

10 9 8 7 6 5 4 3 2 1

F

E

D

C

B

A

39-53-5649	5330-64BGS27F	39-26-6647	5330-64BGS2	64
▲ -5609	▲ -60BGS27F	▲ -6607	▲ -60BGS2	60
-5509	-50BGS27F	-6507	-50BGS2	50
-5409	-40BGS27F	-6407	-40BGS2	40
-5349	-34BGS27F	-6347	-34BGS2	34
-5309	-30BGS27F	-6307	-30BGS2	30
-5269	-26BGS27F	-6267	-26BGS2	26
-5209	-20BGS27F	-6207	-20BGS2	20
▼ -5169	▼ -16BGS27F	▼ -6167	▼ -16BGS2	16
▼ -5149	▼ -14BGS27F	▼ -6147	▼ -14BGS2	14
39-53-5109	5330-10BGS27F	39-26-6107	5330-10BGS2	10
EDP NO.	ENG. NO.	EDP NO.	ENG. NO.	NO. OF CKTS.
5330-NBGS27F -LEAD FREE-		5330-NBGS2		
39-35-2646	5330-64BGS17F	39-26-6646	5330-64BGS1	64
▲ -2606	▲ -60BGS17F	▲ -6606	▲ -60BGS1	60
-2506	-50BGS17F	-6506	-50BGS1	50
-2406	-40BGS17F	-6406	-40BGS1	40
-2346	-34BGS17F	-6346	-34BGS1	34
-2306	-30BGS17F	-6306	-30BGS1	30
-2266	-26BGS17F	-6266	-26BGS1	26
-2206	-20BGS17F	-6206	-20BGS1	20
-2166	-16BGS17F	-6166	-16BGS1	16
▼ -2146	▼ -14BGS17F	▼ -6146	▼ -14BGS1	14
39-35-2106	5330-10BGS17F	39-26-6106	5330-10BGS1	10
EDP NO.	ENG. NO.	EDP NO.	ENG. NO.	NO. OF CKTS.
5330-NBGS17F -LEAD FREE-		5330-NBGS1		
		39-26-1645	5330-64BG3	64
		▲ -1605	▲ -60BG3	60
39-28-5500	5330-50BT2	-1505	-50BG3	50
▲ -5400	▲ -40BT2	-1405	-40BG3	40
-5340	-34BT2	-1345	-34BG3	34
-5300	-30BT2	-1305	-30BG3	30
-5260	-26BT2	-1265	-26BG3	26
-5200	-20BT2	-1205	-20BG3	20
▼ -5160	▼ -16BT2	▼ -1165	▼ -16BG3	16
▼ -5140	▼ -14BT2	▼ -1145	▼ -14BG3	14
39-28-5100	5330-10BT2	39-26-1105	5330-10BG3	10
EDP NO.	ENG. NO.	EDP NO.	ENG. NO.	NO. OF CKTS.
5330-NBT2 -LEAD FREE-		5330-NBG3 -LEAD FREE-		

REVISED EC NO: J2006-0712 DRW: YANAGI MOTO 2005/10/03 CHK: D. TANAKA 2005/10/06 APPR: NUKITA 2005/10/14	GENERAL TOLERANCES (UNLESS SPECIFIED)		DIMENSION STYLE MM/IN		SCALE 2:1	DESIGN UNITS METRIC	THIRD ANGLE PROJECTION	
	10 UNDER	± 0.2	DRAWN BY H. HIRAMOTO		DATE 1989/11/10	TITLE QIK FLECS HEADER ASSY ST WITH EJECT LEVER ENGLISH ONLY		
	10 OVER 30 UNDER	± 0.25	CHECKED BY M. TOMITA		DATE 2003/06/13			
	30 OVER	± 0.3	APPROVED BY M. YOMITA		DATE 2003/06/13	MOLEX INCORPORATED		
	ANGULAR	± 3 °	MATERIAL NO.		DOCUMENT NO. SD-5330-003			
DRAFT WHERE APPLICABLE MUST REMAIN WITHIN DIMENSIONS		SIZE A3		THIS DRAWING CONTAINS INFORMATION THAT IS PROPRIETARY TO MOLEX INCORPORATED AND SHOULD NOT BE USED WITHOUT WRITTEN PERMISSION				