

Data sheet

Type 360271

Page 1/3

P/N
360271

xx=number of poles

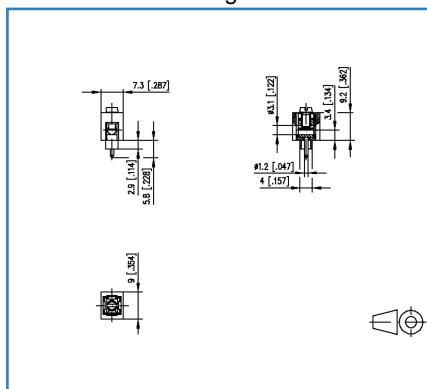
11/07/2018

Version: S

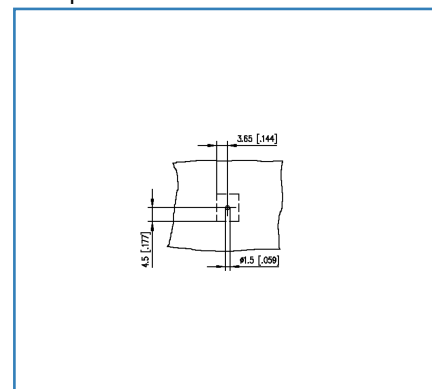
Illustrations



Dimensional drawing



Drill pattern



See enlarged drawings at the end of document

Product specification

- screw type terminal block, solderable
- direction of connection 90°
- wire protector
- color black
- with molded housing, single solder pin, screw brought down by hand (transport safety)



Technical Data


General Data

Tightening torque SEV	0.5 Nm
Tightening torque UL	7 lb-in
Solder pin length	2.9 mm
min. number of poles	1
max. number of poles	1
Insulating material class	CTI 600

Connection Data

rat.wiring solid AWGmax	0.33 mm ² - 2 mm ² / AWG 22 - AWG 14
rat.wiring strand.AWGmax	0.33 mm ² - 1.5 mm ² / AWG 22 - AWG 14

Approvals

 V / A / 24	50 / 15 / 24 - 14
---	-------------------

Material

wire protector material	CuNi18
REACH - substance (SVHC)	Lead / 7439-92-1

Climatic Data

upper limit temperature	105 °C
lower limit temperature	-40 °C

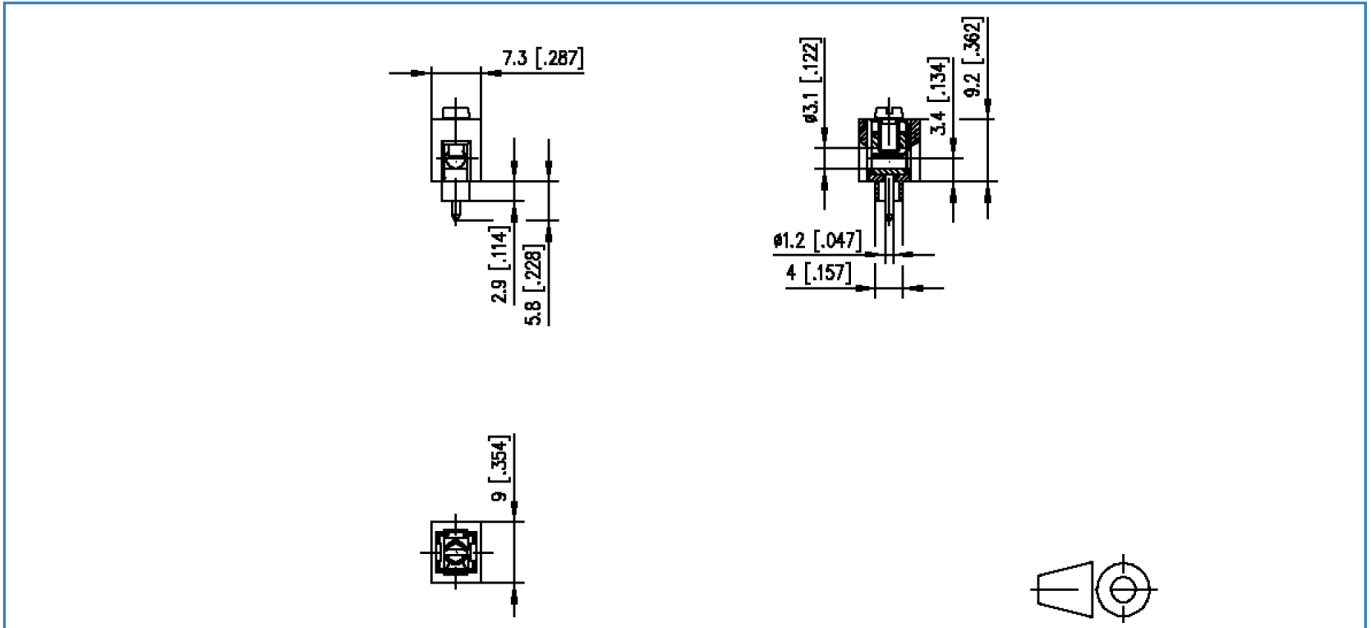
General

solderability	Acc. to JEDEC JESD22-B102E 245°C/5s
---------------	-------------------------------------

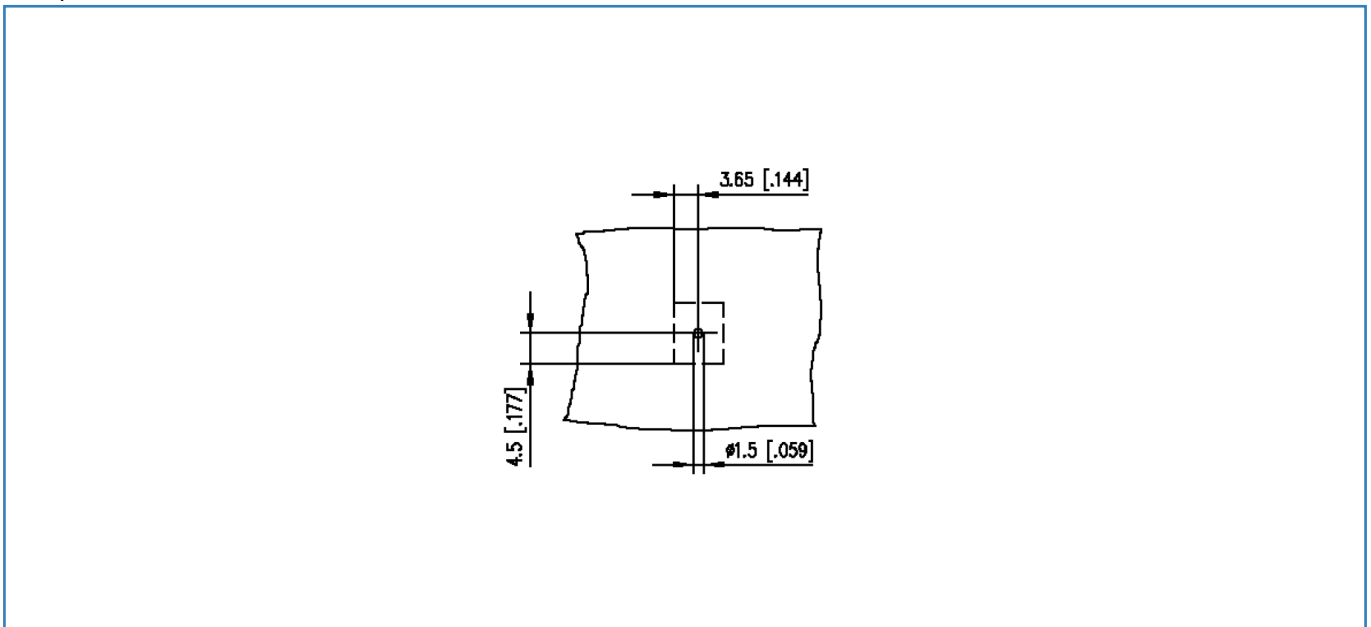


Illustrations

Dimensional drawing



Drill pattern



© 2018 METZ CONNECT - Technische Änderungen vorbehalten! Subject to modifications! Sous réserve de modifications techniques!