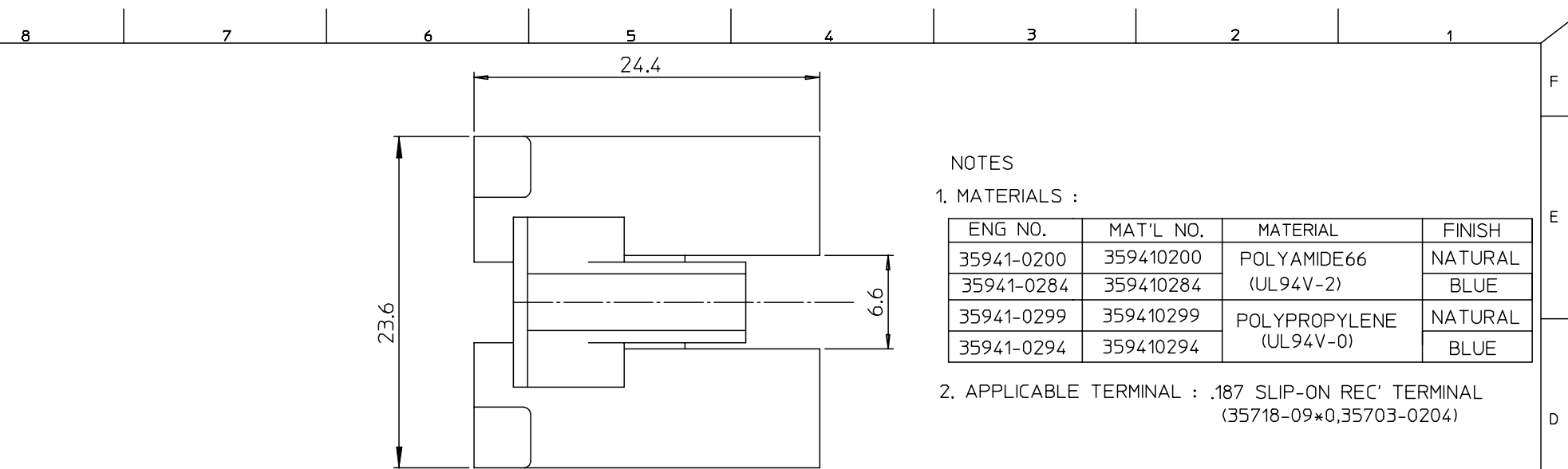


DWG. NO.  
SD-35941-001

SIMILAR ITEM

PROJECT NO.

DO NOT SCALE DRAWING  
DIMENSION IN METRIC

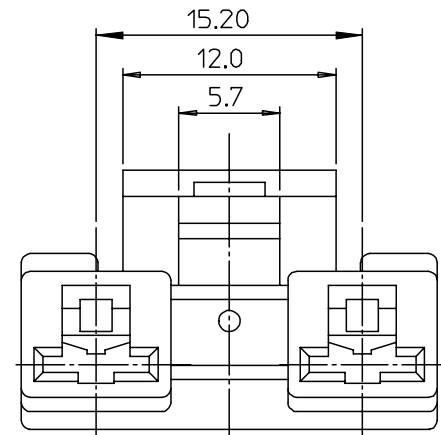
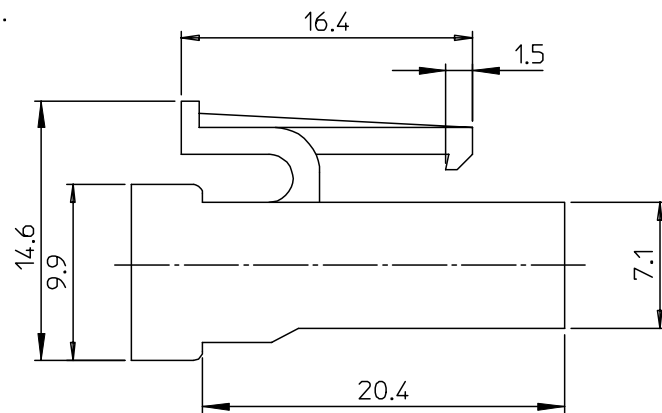
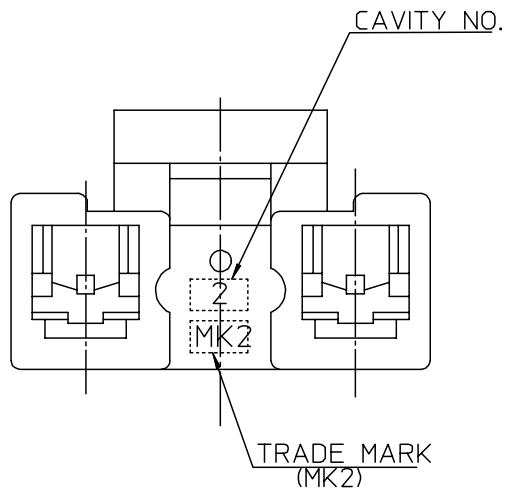


NOTES

1. MATERIALS :

ENG NO.	MAT'L NO.	MATERIAL	FINISH
35941-0200	359410200	POLYAMIDE66 (UL94V-2)	NATURAL
35941-0284	359410284		BLUE
35941-0299	359410299	POLYPROPYLENE (UL94V-0)	NATURAL
35941-0294	359410294		BLUE

2. APPLICABLE TERMINAL : .187 SLIP-ON REC' TERMINAL  
(35718-09\*0,35703-0204)



REVISED	ECN NO. KOR2004-0073	QUALITY SYMBOLS MAJOR $\blacktriangledown$ = 0 CRITICAL $\nabla$ = 0	GENERAL TOLERANCES: (UNLESS SPECIFIED)		SCALE 4:1	DESIGN UNITS <input checked="" type="checkbox"/> mm <input type="checkbox"/> INCH	THIRD ANGLE PROJECTION	DIMENSIONS: <input type="checkbox"/> mm <input type="checkbox"/> INCH <input checked="" type="checkbox"/> mm ONLY	SHT	REV
	DRWN: C.B.CHIN 04/05/14		4 PLACES $\pm 0.$	$\pm -$	DRAWN BY & DATE W.Y.YNAG 99/11/14	TITLE: .187 HOUSING-2P (FOR DRAIN MOTOR)				
	CHK: W.Y.YANG		3 PLACES $\pm 0.$	$\pm -$	CHECKED BY & DATE B.K.CHOI 99/11/14	MOLEX INCORPORATED				
	APPR: C.W.LEE		2 PLACES $\pm 0.30$	$\pm -$	APPROVED BY & DATE C.W.LEE 99/11/14	CAD FILENAME S9410200.MI	MATERIAL NO. SEE NOTES	DRAWING NO. SD-35941-001	SHEET NO. 1 OF 1	
B	REV	DESCRIPTION	1 PLACE $\pm 0.30$	$\pm -$	DRAFT WHERE APPLICABLE MUST REMAIN WITHIN DIMENSIONS		THIS DRAWING CONTAINS INFORMATION THAT IS PROPRIETARY TO MOLEX INCORPORATED AND SHOULD NOT BE USED WITHOUT WRITTEN PERMISSION.		SIZE B	