

10 9 8 7 6 5 4 3 2 1

F

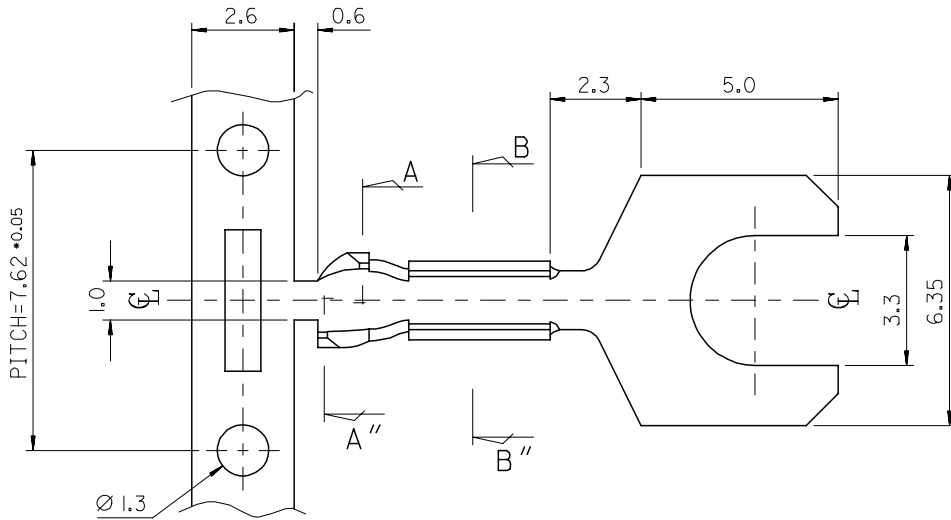
E

D

C

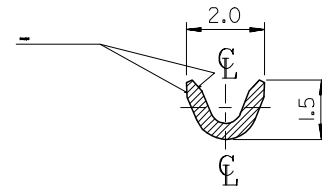
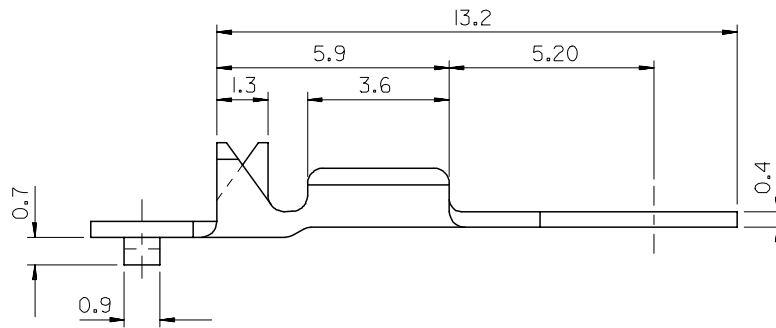
B

A

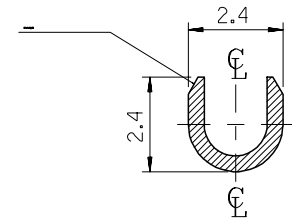


NOTES

1. MATERIAL : BRASS, 0.4mm THICKNESS
2. FINISH : PRE-PLATED TIN
3. RECOMMENDED LENGTH OF WIRE STRIP IS 4.6-5.0mm



SEC' : B-B''



SEC' : A-A''

NEW RELEASED EC NO: KOR2008-0009 DRWN: JHPARK 2007/07/18 CHKD: WY. YANG 2007/08/20 APPR: YUNSIKKIM 2007/08/20	DESCRIPTION REV	QUALITY SYMBOLS ▽=0 ◻=0	GENERAL TOLERANCES (UNLESS SPECIFIED)		DIMENSION STYLE MM ONLY		SCALE 1:1	DESIGN UNITS METRIC	THIRD ANGLE PROJECTION		
			4 PLACES ± --- ± --- 3 PLACES ± 0.005 ± --- 2 PLACES ± ± --- 1 PLACE ± 0.1 ± ---	mm INCH	DRAWN BY JS.KANG	DATE	TITLE SPADE TERMINAL (D/P)				
			DRAFT WHERE APPLICABLE MUST REMAIN WITHIN DIMENSIONS	ANGULAR ± 1 °	CHECKED BY BK.CHOI	DATE	MOLEX INCORPORATED				
					MATERIAL NO. SD357491310	APPROVED BY	DATE	DOCUMENT NO. SD 35749-1310	SHEET NO. 1 OF 1	THIS DRAWING CONTAINS INFORMATION THAT IS PROPRIETARY TO MOLEX INCORPORATED AND SHOULD NOT BE USED WITHOUT WRITTEN PERMISSION	

9 8 7 6 5 4 3 2 1