

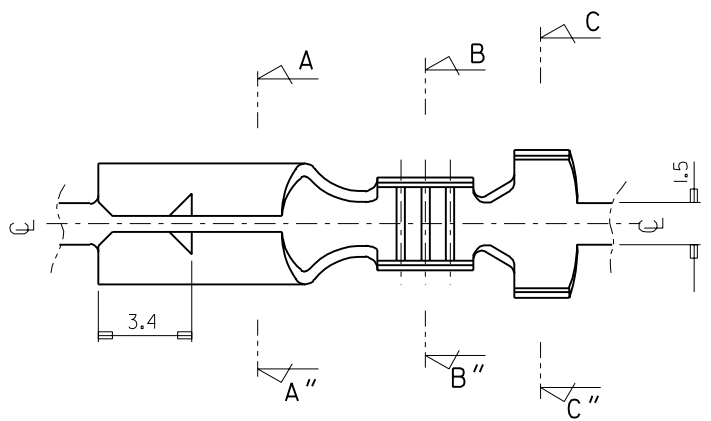
DO NOT SCALE DRAWING DIMENSION IN METRIC

PROJECT NO. $\varnothing 3.56$ PIN REC'

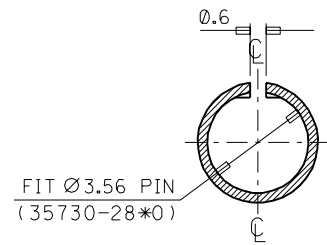
SIMILAR ITEM

EDP NO.

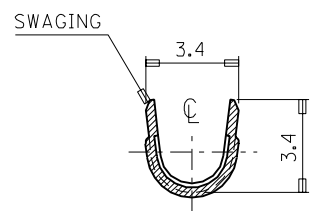
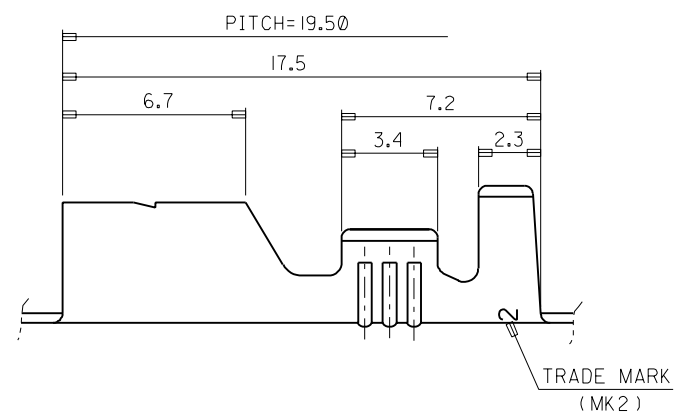
ENG. NO. SD 35730-29*0



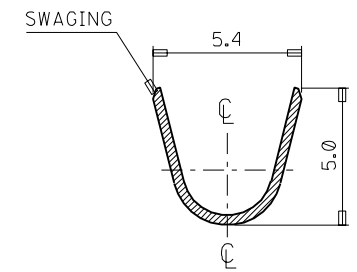
- NOTES
- MAT'L : BRASS , 0.35mm THICKNESS
 - FINISH : 35730-2900(UNPLATED)
35730-2910(POST-TIN PLATED)
35730-2940(TIN-LEAD PLATING)
 - RECOMMENDED LENGTH OF WIRE STRIP IS 4.7-5.3



SEC' : A-A''



SEC' : B-B''



SEC' : C-C''

ASS'Y PART		QTY/REEL OR PACK	SURFACE AREA	MATERIAL	SEE NOTES	WIRE RANGE	GENERAL TOLERANCES	MOLEX MOLEX-KOREA CO.,LTD.
DESCRIPTION	ENG.NO.	7,000 Q'TY /REEL	MM ²	DIMENSION CLASSIFICATION		#20-#14	DIM. : ±0.30	
		DIE NO. / / /	LAYOUT NO. / / /	<input checked="" type="checkbox"/> : CRITICAL <input checked="" type="checkbox"/> : MAJOR <input type="checkbox"/> : MINOR () : REFERENCE		MM ² : 0.5-2.0	ANGLE : ±0.20	REVISE ONLY ON CAD SYSTEM
B	REVISED	93-025	93-11-1	WIRE CRIMP WIDTH	INS. CRIMP WIDTH	INSULATION RANGE	TITLE: $\varnothing 3.56$ PIN RECEPTACLE	1 of 1
A	CAD REDRAWING		93.6.15	DIE FEED	APPL FEED	DR. / CHK.	ENG.NO.	SD 35730-29*0
LTR	REVISION RECORD	ECN	DATE	WBDW	IBDW	APP'D BY	SCALE	REV B
						J.S.KANG	6/1	
						B.K.CHOI		