



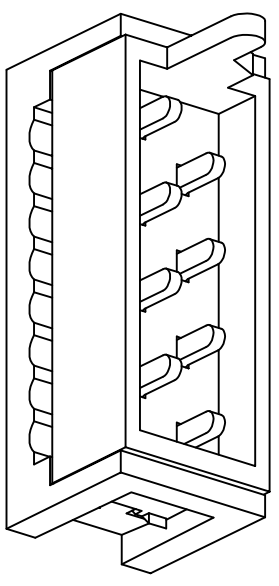
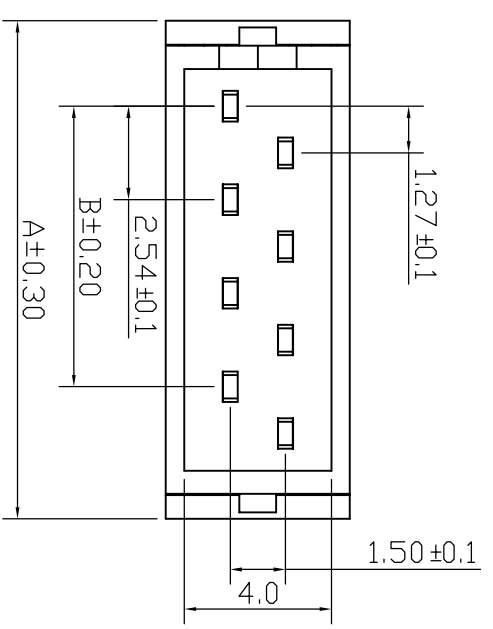
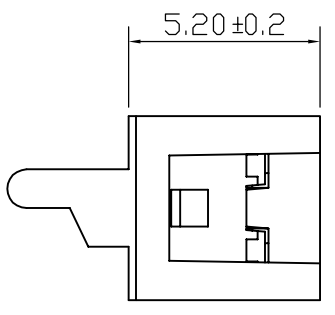
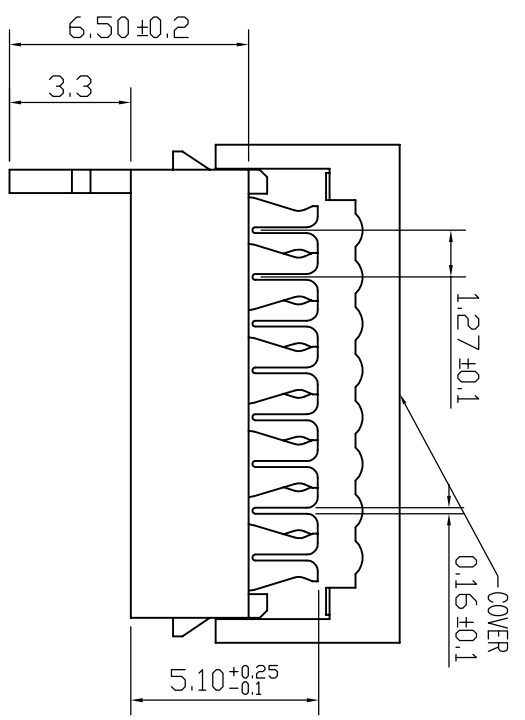
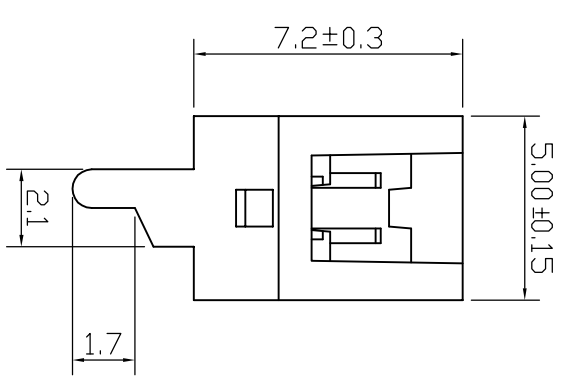
REV	DESCRIPTION	DATE
A	RELEASE	2018/8/17

**MATERIAL FINISH**

Insulator: PBT Glass Fiber (UL94V-0)  
 Contact : Brass  
 Contact : Sn Over Ni.

**ELECTRICAL CHARACTERISTICS:**

Current Rating: 1 Amp  
 Contact Resistance: 20mΩ Max  
 Withstanding Voltage: 500V AC/Min  
 Insulation Resistance: 1000MΩ Min  
 Temperature Range: -40° C To +105° C



part number	PULSES	DIM A	DIM B	qty/Tray
3530-04-0101-99	04	8.45	2.54	372
3530-06-0101-99	06	10.99	5.08	288
3530-08-0101-99	08	13.53	7.62	228
3530-10-0101-99	10	16.07	10.16	192
3530-12-0101-99	12	18.61	12.7	168
3530-14-0101-99	14	21.15	15.24	144
3530-16-0101-99	16	23.69	17.78	132
3530-18-0101-99	18	26.23	20.32	120
3530-20-0101-99	20	28.77	22.86	108
3530-22-0101-99	22	31.31	25.40	96
3530-24-0101-99	24	33.85	27.94	84
3530-26-0101-99	26	36.39	30.48	84

**Cnc Tech, LLC**

ITEM: Male-on-Wire Connector

UNLESS TOLERANCE	
GENERAL	ANGLE
X. ± 0.38	X.° ± 3.0°
.X ± 0.38	.X° ± 2.0°
.XX ± 0.25	.XX° ± 1.0°
.XXX ± 0.10	.XXX° ± 0.5°

DRAW BY	
DESIGN BY	
CHECK BY	
APPROVE BY	
SCALE	1:1
SHEET	1/1
UNIT	MM

DRW NO:	3530-XX-0101-99	REV:	A1
---------	-----------------	------	----