

used for:

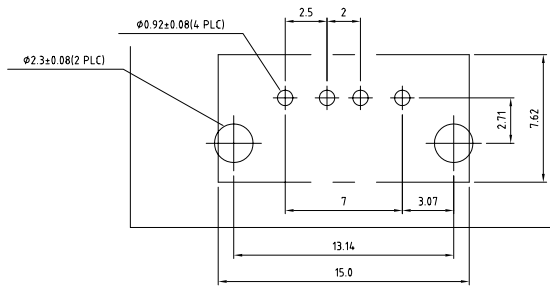
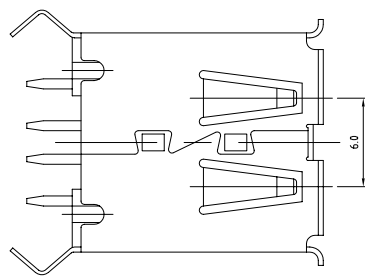
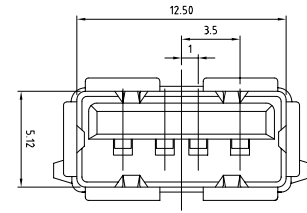
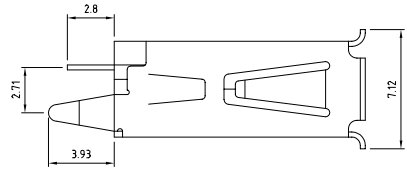
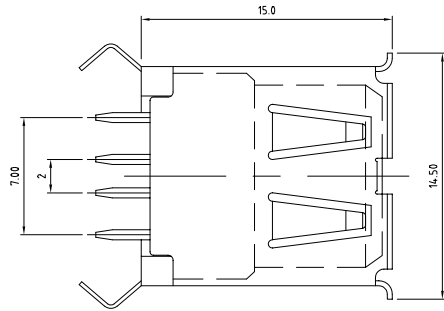
### SPECIFICATIONS

#### Materials

Insulator: Thermoplastic, Glass Filled, UL94V-0 Rated  
 Contact: Copper Alloy, 30u" Gold Plated  
 Shell: Copper Alloy, Nickel Plated

#### Electrical

Insulation Resistance: 1000 Megohms Minimum  
 Contact Resistance: 30 Milliohms Maximum Initial  
 Dielectric Withstanding Voltage: 500V AC for one minute  
 Current: 1.0 Ampere Maximum Per Contact At 30°C T-Rise  
 Voltage: 30V AC (rms)  
 Temperature: -55°C ~ 85°C



Directive 2002/95/EC  
 „RoHS“  
 Compliant

THIS DRAWING MAY NOT BE COPIED OR REPRODUCED IN ANY WAY, AND MAY NOT BE PASSED ON TO A THIRD PARTY WITHOUT WRITTEN PERMISSION. OWNERSHIP AND COPYRIGHT OF CONEC CORPORATION DO NOT ALTER CAD DRAWING BY HAND

| tolerance   |             | finish                    |                |
|---|-------------|---------------------------|----------------|
| unless otherwise specified tolerance shall be as follow |             |                           |                |
| Decimal:  | .xx<br>.xxx | 2006                      | date           |
| Angles:   |             | April 17                  | name           |
|   |             | April 17                  | Kathy Skelhorn |
|   |             | norm                      |                |
|   |             | d-old                     |                |
| a   | origin      | <b>CONEC</b> <sup>®</sup> |                |
| rev.  | description |                           |                |
| date  | name        |                           |                |

| scale:                       |  | material:          |           |
|------------------------------|--|--------------------|-----------|
| SEE SPECIFICATIONS           |  | SEE SPECIFICATIONS |           |
| title:                       |  |                    |           |
| USB 2.0 connector A type PCB |  |                    |           |
| Thru-Hole 4pin female        |  |                    |           |
| RoHS compliant               |  |                    |           |
| drawing no.:                 |  | AutoCAD 2005       | DIN A3    |
| 39K1A238                     |  |                    | sheet 1/1 |
| part no.:                    |  | 33UBAD-04SW12R     |           |