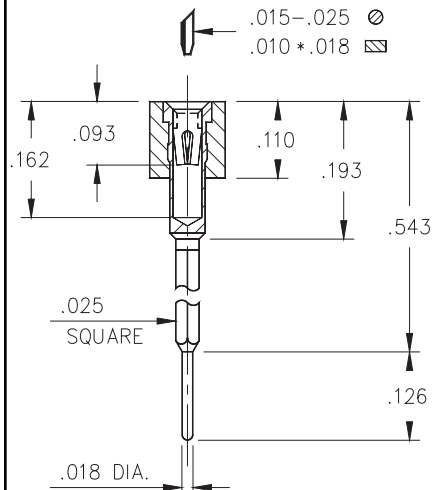
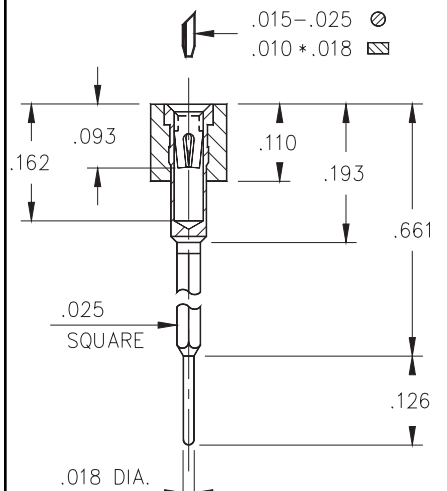


**Fig. 1**



**Fig. 2**



**Fig. 3**

- Wrapost/solder tail combinations are available in 3 lengths using M-M pin numbers:  
 326...001 uses pin # 2601  
 326...002 uses pin # 2602  
 326...003 uses pin # 2603
- Hi-Rel, 4-finger BeCu #30 clip rated at 3 amps. See page 208 for details.



**Ordering Information**

<b>Fig. 1</b>	<b>Series 326...001</b>
	326-XX-1__-41-001000 Specify # of pins → 01-64
<b>Fig. 2</b>	<b>Series 326...002</b>
	326-XX-1__-41-002000 Specify # of pins → 01-64
<b>Fig. 3</b>	<b>Series 326...003</b>
	326-XX-1__-41-003000 Specify # of pins → 01-64

**XX=Plating Code**  
 See Below



*For RoHS compliance, select  $\diamond$  plating code. For the all gold option (XX=13) also change part number from 326-XX-1XX-41-00X000 to 326-13-1XX-41-00X100*

SPECIFY PLATING CODE XX=	13 $\diamond$	93		43 $\diamond$
Sleeve (Pin)	10 $\mu$ " Au	200 $\mu$ " Sn/Pb		200 $\mu$ " Sn
Contact (Clip)	30 $\mu$ " Au	30 $\mu$ " Au		30 $\mu$ " Au