



Part Number : [11185419](#)

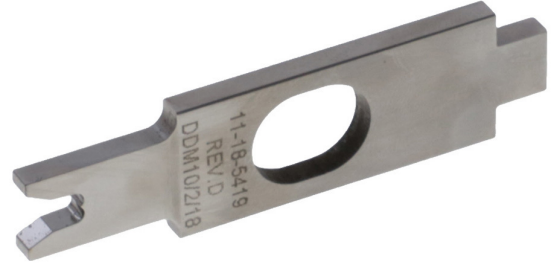
Product Description : Insulation Punch

Series Number : 207126

Status : Active

Product Category : Applicators and Crimp Modules

Engineering Number : 60843A108



Documents & Resources

Tooling Specifications

[ATS-STANDARD-PARTS-001.pdf](#)

Product Environment Compliance

Compliance

GADSL/IMDS	Not Relevant
China RoHS	Not Relevant
EU ELV	Not Relevant
Low-Halogen Status	Not Relevant
REACH SVHC	Not Contained per D(2023)8585-DC (23 Jan 2024)
EU RoHS	Compliant per EU 2015/863

Multiple Part Product Compliance Statements

- Eu RoHS
- REACH SVHC
- Low-Halogen

Multiple Part Industry Compliance Documents

- IPC 1752A Class C
- IPC 1752A Class D
- Molex Product Compliance Declaration
- IEC-62474

Part Details

General

Status	Active
Category	Applicators and Crimp Modules
Series	207126
Description	Insulation Punch
Comments	See Tooling Specification (PDF) Above
Function	Cutter
Geographic Area	Global
Level of Automation	Semi-Automatic
More Detailed Tech Information	toolingsupport@molex.com
Product Name	N/A
Tool Type	Applicator
UPC	800753908550
Warranty Disclaimer	<p>CAUTION: Molex tooling crimp specifications are valid only when used with Molex terminals and tooling manufactured by Molex and sold by Molex or authorized distributors ("Molex Tooling"). When using tooling other than Molex Tooling with Molex specific connector systems listed in our ATS documents, the Molex tooling qualification does not apply and the responsibility for full qualification of the connector system is that of the customer. Molex accepts no liability for connector performance or tooling support where tooling other than Molex Tooling is used or where Molex Tooling is modified.</p>

Physical

Net Weight	28.540/g
------------	----------

Use with Part(s)

Description	Part Number
Mini-Mac Applicator	<u>11182216</u>
Mini-Mac Applicator	<u>638304000</u>
Mini-Mac Applicator	<u>638919000</u>

This document was generated on Feb 10, 2025