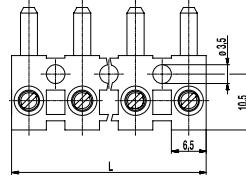
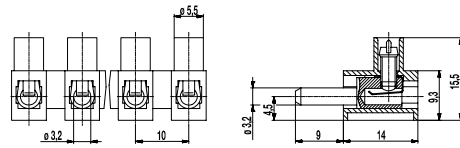
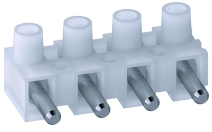


# 322-STFS(-DS)

Plug-in terminal strip  
Screw connection & pin



## GENERAL INFORMATION

Pitch	10 mm
No. of poles	2 - 12
Usable with	323-STFB(-DS)
Areas of application	Applications that require to easily open and close not energised circuits.

## TECHNICAL DATA

Clamping Range	<i>solid / stranded / AWG</i>		
<i>without wire protector</i>	0,75 - 6 mm <sup>2</sup> / 0,75 - 4 mm <sup>2</sup> / 18 - 10 AWG		
<i>with wire protector</i>	0,5 - 4 mm <sup>2</sup> / 0,5 - 2,5 mm <sup>2</sup> / 20 - 12 AWG		
Rated Cross Section	2,5 mm <sup>2</sup>		
Wire Stripping Length	6 mm ± 0,5mm		
Overvoltage Category	III	III	II
Pollution Severity Level	3	2	2
Rated Voltage	400 V	630 V	1000 V
Rated Impulse Voltage	6 kV	6 kV	6 kV
Rated Insulation Voltage	450 V acc. to EN 60998-1 [1]		
Rated Current	16 A		
Torque	0,5 Nm		
Other specifications	Rated values apply to use in combination with 323-STFB and insulated substrates.		

## APPROVALS

	Current [A]	Voltage [V]	Group	AWG	[Nm]
	15	300	B	26 - 10	0,51 [2]
	10	300	D,E	26 - 10	0,51 [2]

## MATERIAL

Moulding	PA, natural, V-2
Comparative Tracking Index	CTI ≥ 600
Insulating Group	I
Temperature Range	-40°C up to 100°C
Terminal body	Nickel plated brass
Screw	M3; zinc plated steel, blue passivated
Wire protector	Tin plated tin bronze
Plug	Nickel plated brass

## OPTIONS / ACCESSORIES

- Marking options on the screw guides
- Leading plug for the protective conductor pole
- Moulding made of special polyamide for e.g. household appliances

[1] with insulating base

[2] for 322-STFS-DS: 26 - 12 AWG

## CONFIGURATIONS

Version	Poles	Item	Article number	Item	Article number	Length (L)	PU
Standard	2	322-STFS/02	72.821.002	322-STFS-DS/02	12.821.032	18,00 mm	1000
Standard	3	322-STFS/03	73.821.002	322-STFS-DS/03	13.821.032	28,00 mm	1000
Standard	4	322-STFS/04	74.821.002	322-STFS-DS/04	14.821.032	38,00 mm	500
Standard	5	322-STFS/05	75.821.002	322-STFS-DS/05	15.821.032	48,00 mm	500
Standard	6	322-STFS/06	76.821.002	322-STFS-DS/06	16.821.032	58,00 mm	100
Standard	7	322-STFS/07	77.821.002	322-STFS-DS/07	17.821.032	68,00 mm	100
Standard	8	322-STFS/08	78.821.002	322-STFS-DS/08	18.821.032	78,00 mm	80
Standard	9	322-STFS/09	79.821.002	322-STFS-DS/09	19.821.032	88,00 mm	80
Standard	10	322-STFS/10	80.821.002	322-STFS-DS/10	20.821.032	98,00 mm	50
Standard	11	322-STFS/11	81.821.002	322-STFS-DS/11	21.821.032	108,00 mm	50
Standard	12	322-STFS/12	82.821.002	322-STFS-DS/12	22.821.032	117,00 mm	50

