

Data sheet

RP019xxWBLC Typ 049

Page 1/6

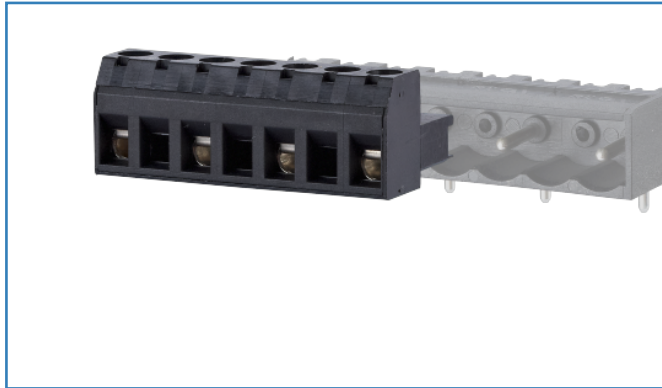
P/N
310492xx

xx=number of poles

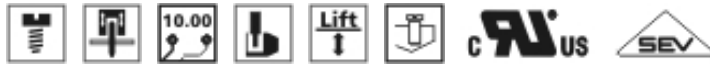
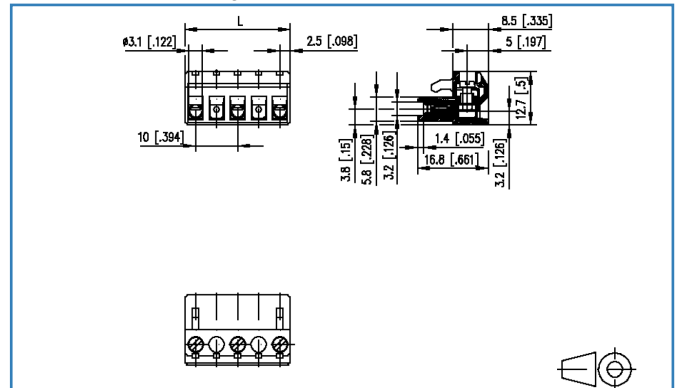
2019/10/24

Version: O

Illustrations



Dimensional drawing



See enlarged drawings at the end of document

Product specification

- screw type terminal block, pluggable
- centerline 10.00 mm, direction of connection vertical 0°
- lift system, fittable without loss of poles
- color black

Technical Data



General Data

Tightening torque SEV	0.5 Nm		
Tightening torque UL	7 lb-in		
min. number of poles	2		
max. number of poles	12		
Insulating material class	CTI 600		
clearance/creepage dist.	9.07 mm		
protection category	IP20		
Min. insul. strip length	6 mm		
Overvoltage category	III	III	II
Pollution degree	3	2	2
Rated voltage	500 V	1000 V	1000 V
Rated test voltage	6 kV	6 kV	6 kV

Connection Data

rat.wiring solid AWGmax	0.33 mm ² - 2.5 mm ² / AWG 22 - AWG 12		
rat.wiring strand.AWGmax	0.33 mm ² - 2.5 mm ² / AWG 22 - AWG 12		

Approvals

 V / A / AWG	600 / 15 / 22 - 12		
approval UL - File No.	E121004		
 2.5 mm ²	630 V / 6 kV / 13.5 A		

Material

insulating material	PA66
flammability class	V0
contact material	CuBe
contact surface	Ni + Ag
terminal body material	CuZn
terminal body surface	Ni
screw surface	Zn Cr(VI)-frei/free
wire protector material	CuNiZn
screw thread	M3
Glow-Wire Flammability GWFI	960 °C acc. to IEC 60695-2-12
Glow-Wire Flammability GWIT	775 °C acc. to IEC 60695-2-13
REACH - substance (SVHC)	Lead / 7439-92-1

Data sheet RP019xxWBLC Typ 049

Page 3/6

P/N
310492xx

xx=number of poles

2019/10/24

Version: O

Technical Data

Climatic Data

upper limit temperature	105 °C
lower limit temperature	-40 °C

General

Tolerance	ISO 2768 -mH
-----------	--------------



Accessories

P/N	Designation
716906	716906



Data sheet RP019xxWBLC Typ 049

Page 5/6

P/N
310492xx

xx=number of poles

2019/10/24

Version: O

Counterpart

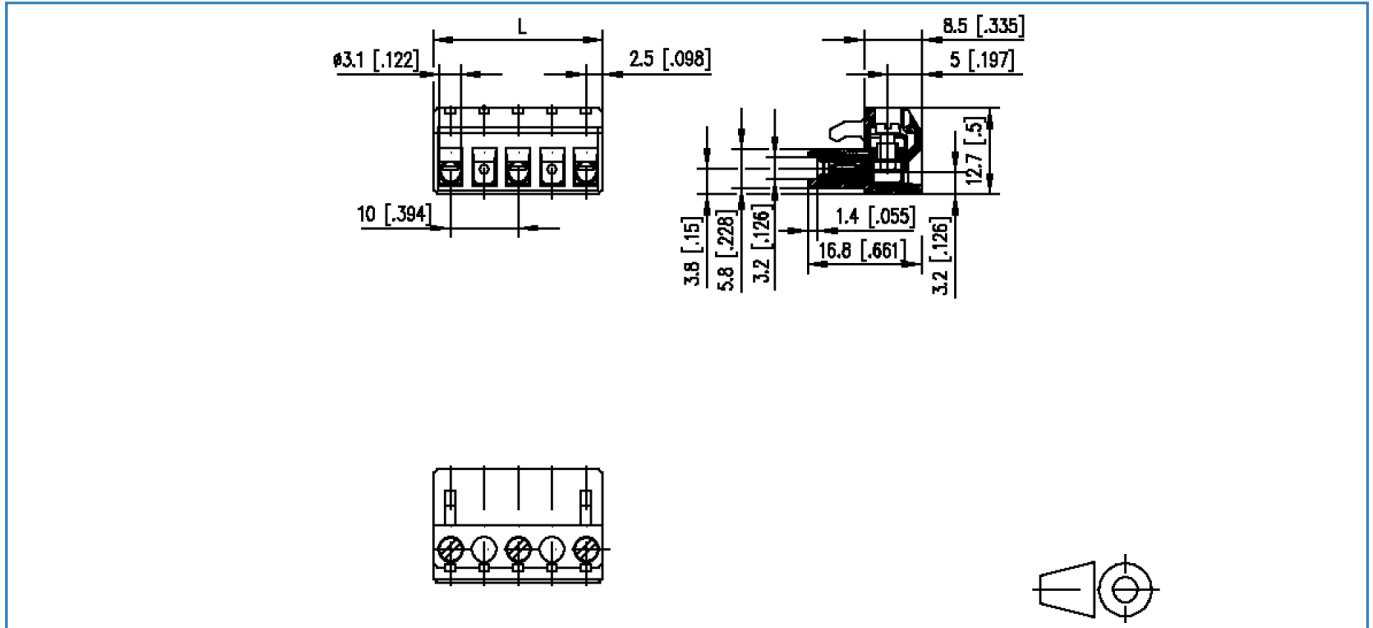
P/N	Designation
310192	PT049xxVBEC Typ 019
310202	PT049xxVBBN Typ 020
310292	PT049xxHBEC Typ 029
310302	PT049xxHBBN Typ 030

© 2019 METZ CONNECT - Technische Änderungen vorbehalten! Subject to modifications! Sous réserve de modifications techniques!



Illustrations

Dimensional drawing



$L = (\text{pole size} - 1) \times \text{centerline} + 5 \text{ mm} [0.197]$

© 2019 METZ CONNECT - Technische Änderungen vorbehalten! Subject to modifications! Sous réserve de modifications techniques!