

Actuator

31-
435.036



<https://eao.com/p/31-435.036>

Your product:



31-435.036 Actuator

FRONT

Front bezel material:	Plastic
Front dimension:	Ø 18 mm
Front bezel colour:	Black
Front form:	round

MOUNTING

Mounting cut-out:	Ø 16 mm
Design:	raised

OPERATING-/INDICATION PART

Lens illumination:	illuminative
---------------------------	--------------

ELECTRICAL CHARACTERISTICS

Standards:	According to EN/IEC 61058-1
Contacts:	1 NO

MECHANICAL CHARACTERISTIC

Switching system:	Low-level element
Weight:	0.007 kg
Operating Travel:	ca. 3 mm
Tightening torque:	Fixing nut max. 0.5 Nm
Terminal:	Universal terminal, 2 x 0.5 mm

Mechanical lifetime: 5 Mio. cycles of operation

Switching action: Momentary

Operating force: 3 N ... 3.5 N

Contact material: Gold

Wire cross section: Max. wire diameter 2 wires à 0.8 mm
Max. wire cross-section of stranded cable 1 x 0.75 mm²

AMBIENT CONDITION

IP Protection: IP40 front side, IP67 with front protective cap

Operating temperature: – 25 °C ... + 55 °C, mounted as a block, make sure the heat can escape freely

Climate resistance: Standard condition according to IEC 60068-2-3
Changing condition according to IEC 60068-2-14

Storage temperature: – 40 °C ... + 85 °C

CERTIFICATE

Conformities: CE, UKCA, 2011 / 65 / EC (RoHS), 2014 / 35 / EU (LVD)

OTHER

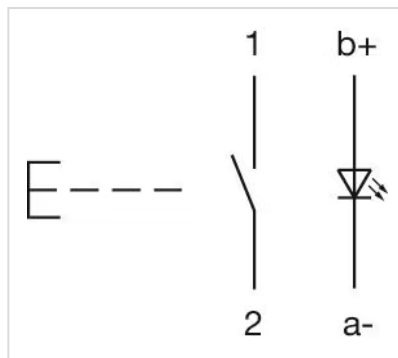
Internal size: Ø 15,8 mm

Housing colour: Black

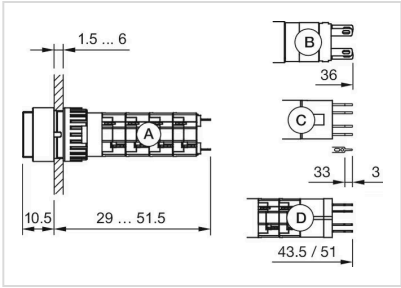
max. number of switching elements: 1

Short Description: Actuator, Ø 16 mm, Ø 18 mm, illuminative, round, Black, Plastic, 1 NO, Momentary, Universal terminal, 2 x 0.5 mm

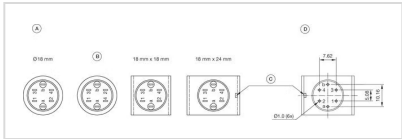
Wiring diagrams:



Dimension drawings:



Component layouts:



Mounting cut-outs:

