

Actuator

31-
425.036



<https://eao.com/p/31-425.036>

Your product:



31-425.036 Actuator

FRONT

Front form:	rectangular
Front dimension:	24 mm x 18 mm
Front bezel material:	Plastic
Front bezel colour:	Black

MOUNTING

Design:	raised
Mounting cut-out:	Ø 16 mm

OPERATING-/INDICATION PART

Lens illumination:	illuminative
---------------------------	--------------

ELECTRICAL CHARACTERISTICS

Switching voltage and switching current:	100 mA at 42 VAC/VDC
Standards:	According to EN/IEC 61058-1
Electric strength:	2500 VAC, 50 Hz, 1 minute, as per IEC 60512-2-11 between all terminals and earth
Protection class:	II
Contacts:	1 NO

MECHANICAL CHARACTERISTIC

Terminal:	Universal terminal, 2 x 0.5 mm
Contact material:	

Gold

Tightening torque:	Fixing nut max. 0.5 Nm
Operating Travel:	ca. 3 mm
Operating force:	3 N ... 3.5 N
Switching system:	<p>This low-level switching element was designed for switching low powers in electronic circuits. The mechanism assures reliable switching of loads ranging from a few $\mu\text{A}/\mu\text{V}$ up to 100 mA/ 42 VAC/DC.</p> <p>Single-break momentary contact, as normally open or normally closed with 4 independent points of contact. 2 momentary contacts per switching element; combination of normally open and normally closed is possible.</p> <p>Special features are the long life, extremely short rebound time and stable contact resistance.</p>
Wire cross section:	<p>Max. wire diameter 2 wires à 0.8 mm</p> <p>Max. wire cross-section of stranded cable 1 x 0.75 mm²</p>
Switching action:	Momentary
Switching system:	Low-level element
Weight:	0.007 kg
Mechanical lifetime:	5 Mio. cycles of operation

AMBIENT CONDITION

Operating temperature:	- 25 °C ... + 55 °C, mounted as a block, make sure the heat can escape freely
Vibration resistance:	10 g at 10 Hz...2000 Hz, amplitude 1.5 mm (Sinusoidal), according to DIN EN 60512-4-4, DIN EN 60068-2-6
Shock resistance:	15 g for 11 ms, as per IEC 60512-4-3, IEC 60068-2-27 (Single impacts, semi-sinusoidal)
Storage temperature:	- 40 °C ... + 85 °C
IP Protection:	IP40 front side, IP67 with front protective cap
Climate resistance:	Standard condition according to IEC 60068-2-3 Changing condition according to IEC 60068-2-14

CERTIFICATE

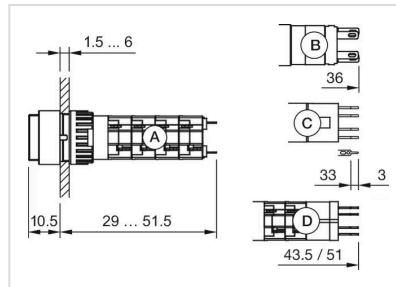
Conformities:	CE, UKCA, 2011 / 65 / EC (RoHS), 2014 / 35 / EU (LVD)
----------------------	---

OTHER

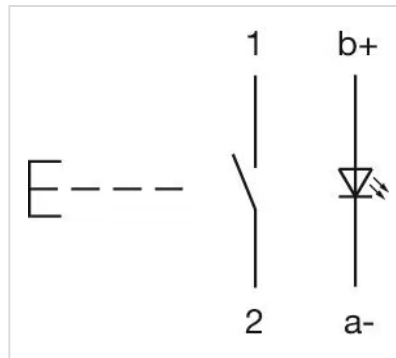
Housing colour:	Black
Internal size:	21,5 mm x 15,3 mm
max. number of switching elements:	1
Short Description:	

Actuator, Ø 16 mm, 24 mm x 18 mm, illuminative, rectangular, Black, Plastic, 1 NO, Momentary, Universal terminal, 2 x 0.5 mm

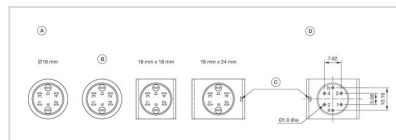
Dimension drawings:



Wiring diagrams:



Component layouts:



Mounting cut-outs:

