

Multi-Point Tab and Screw Connectors for Panel / Chassis Mounting

307-PCM | 11.00 mm (0.433 in) Spacing - 1-21 poles

TECHNICAL INFORMATION

Description

Tab arrangements at various angles

Recommended mounting hardware: M4 pan head screw (#8-32 pan head screw) or similar sized sheet metal screw, self-tapping screw or rivet.

Technical Data

Center to Center Spacing: 11.000 mm (0.433 in)

Nominal Cross Section: 2.8 mm² (4340 mils²)

Wire Stripping Length: 8.000 mm (0.315 in)

Bill of Materials

Molding : Polycarbonate, Self extinguishing UL 94, V-0

Color : Black

Temperature limits :

Short Time : 135°C (275°F)

Continuous : 105°C (221°F)

Low Limit : -100°C (-148°F)

Comparative Tracking Index : CTI ? 250 V

Oxygen Index Rating : 40 %

Terminal Body and Tabs: Nickel plated copper alloy

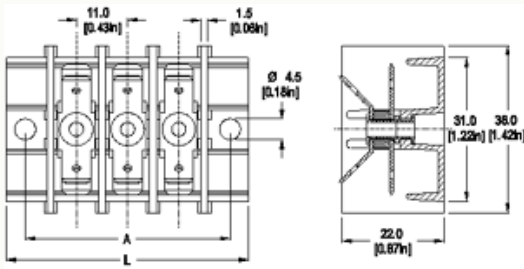
Screw and Pressure Plate: Slotted head, zinc plated blue passivated, steel substrate

Rivet: Tin plated copper alloy

Tabs: 2.8 mm (0.110 in.), 4.8 mm (0.187 in.) or 6.3 mm (0.250 in.)

Screw: Slotted head, zinc plated blue passivated, steel substrate M4

TECHNICAL DRAWING



Description :

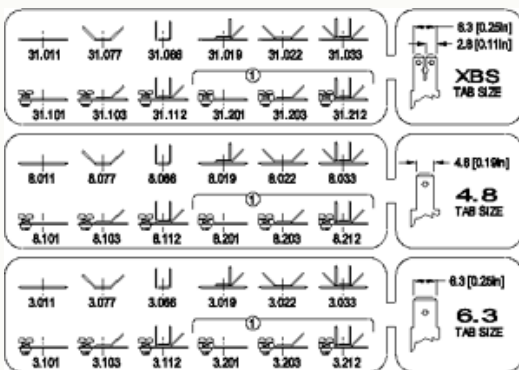
Length of Connector (L)

$L = \text{No. of Poles} \times \text{Center to Center Spacing} + 19.3 \text{ mm}$

Distance between mounting hole centers (A)

$A = \text{No. of Poles} \times \text{Center to Center Spacing} + 11.3 \text{ mm}$

SCHEMAS



Description :

(1) These arrangements feature flanges to prevent wires slipping from under the screw head

① THESE ARRANGEMENTS FEATURE FLANGES TO PREVENT WIRES SLIPPING FROM UNDER THE SCREW HEAD

Tab arrangement