

**RG 85 III - Key switch, square design, 1 NO, without lens****3.99.400.112/6600**

Please order lenses separately.

**Dimensions**

Length	64 mm
Mounting grid min.	55 x 35 mm
Width	34 mm

**Mechanical design**

Version	square
Mounting	on U-rails or single mounting
Terminals	8-pin Micro-Match® female connector
Contact system	snap-action contact
Contact arrangement	1 NO
Contact materials	Ag
Symbol illumination	2 LED blue
Edge illumination	4 LED blue

**Mechanical characteristics**

Operating force	3.5 N
Operating travel	1 mm
Switching travel NO	1 mm
Switching travel NC	0.6 mm

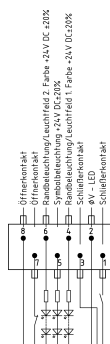
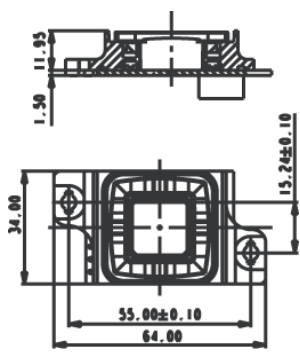
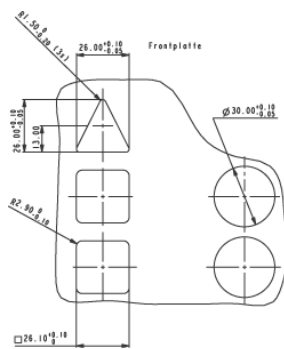
**Electrical characteristics**

Rated voltage min.	3 V
Rated voltage max.	35 V
Rated current min.	0.1 mA
Rated current max.	250 mA
Rated power max.	12.5 W
Contact resistance when new max.	100 mΩ
Contact resistance acc. to life max.	3 Ω
Bouncing time max.	10 ms
Operating voltage for LED	24 <sup>±20%</sup> V
Input current LED	per color/LED row 9 - 16 mA

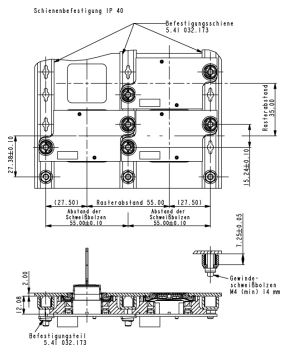
**Other specifications**

Ambient temp. operating min.	-25 °C
Ambient temp. operating max.	+70 °C
Storage temperature min.	-40 °C
Storage temperature max.	+80 °C
Environmental resistance	acc. to IEC 60068-2-14, -30, -33 and -78

Operating life min. (operations)	1,000,000 cycle
Degree of protection rail mounting	IP40 (DIN EN 60529)
Degree of protection single mounting	IP65 (DIN EN 60529)
Flammability of materials	according to UL 94 HB
ROHS compliant	yes
REACH compliant	yes



Technical data are approximate and intended solely for general orientation in the selection of a product. Subject to modifications and errors. Images and other graphics may only be similar. For more information, refer to [www.rafi.de](http://www.rafi.de) chapter Imprint / Data Protection.



Einzelbefestigung

