



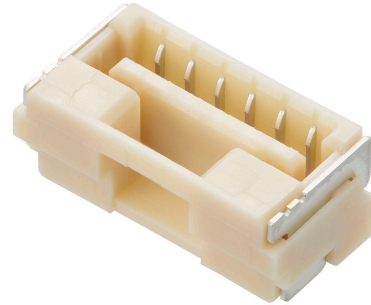
Part Number : [5023820270](#)

Product Description : 1.25mm Pitch CLIK-Mate Wire-to-Board PCB Receptacle, Single Row, Vertical, Tin Plating, 2 Circuits

Series Number : 502382

Status : Active

Product Category : PCB Headers and Receptacles



Documents & Resources

Drawings

[5023820270_sd.pdf](#)

3D Models and Design Files

[5023820270_stp.zip](#)

Specifications


[AS-502380-002-001.pdf](#)

[SPK-502382-001-001.pdf](#)

[PS-502382-001-001.pdf](#)

Product Environment Compliance

Compliance

GADSL/IMDS	Compliant with Exemption 44; 33
China RoHS	
EU ELV	Not Relevant
Low-Halogen Status	Not Low-Halogen per IEC 61249-2-21
REACH SVHC	Not Contained per D(2024)6225-DC (07 Nov 2024)
EU RoHS	Compliant per EU 2015/863

[Multiple Part Product Compliance Statements](#)

- Eu RoHS
- REACH SVHC
- Low-Halogen

[Multiple Part Industry Compliance Documents](#)

- IPC 1752A Class C
- IPC 1752A Class D
- Molex Product Compliance Declaration
- IEC-62474
- chemSHERPA (xml)

EU RoHS Certificate of Compliance

Part Details

General

Status	Active
Category	PCB Headers and Receptacles
Series	502382
Description	1.25mm Pitch CLIK-Mate Wire-to-Board PCB Receptacle, Single Row, Vertical, Tin Plating, 2 Circuits
Application	Signal, Wire-to-Board
Component Type	PCB Receptacle
Product Name	CLIK-Mate
UPC	822350895194

Agency

UL	E29179
----	--------

Electrical

Current - Maximum per Contact	1.0A
Voltage - Maximum	50V AC (RMS)/DC

Physical

Circuits (Loaded)	2
Circuits (maximum)	2
Color - Resin	Natural
Durability (mating cycles max)	30
Glow-Wire Capable	No
Guide to Mating Part	Yes
Keying to Mating Part	Yes
Lock to Mating Part	Yes

Mated Height	7.80mm
Material - Metal	Copper Alloy
Material - Plating Mating	Tin
Material - Plating Termination	Tin
Material - Resin	High Temperature Thermoplastic
Net Weight	180.401/mg
Number of Rows	1
Orientation	Vertical
Packaging Type	Embossed Tape on Reel
PCB Locator	No
PCB Retention	Yes
Pitch - Mating Interface	1.25mm
Pitch - Termination Interface	1.25mm
Plating min - Mating	1.016µm
Plating min - Termination	1.016µm
Polarized to Mating Part	Yes
Polarized to PCB	No
Stackable	No
Temperature Range - Operating	-40° to +105°C
Termination Interface Style	Surface Mount

Mates With / Use With

Mates with Part(s)

Description	Part Number
1.25mm Pitch CLIK-Mate Single Row Plug Housings	<u>502380</u>
CLIK-Mate-to-CLIK-Mate Off-the-Shelf (OTS) Cable Assemblies	<u>224091</u>
CLIK-Mate-to-Pigtail Off-the-Shelf (OTS) Cable Assemblies	<u>224092</u>