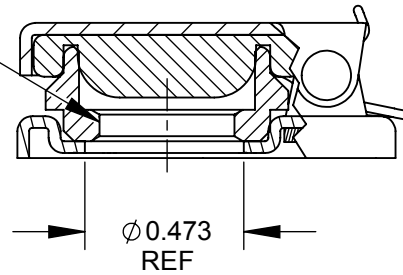


7/16-32 UNS-2B
THREAD



NOTES:

1. MATERIALS:

COVER & BASE - STEEL
 FINISH - POLYESTER POWDER COAT
 SEMI-GLOSS BLACK

GASKET - SYNTHETIC RUBBER
 TORSION SPRING - STAINLESS STEEL
 AXLE - COPPER ALLOY, NICKEL PLATED
 NUT - COPPER ALLOY, NICKEL PLATED PER
 MIL-F-14072, QQ-N-290, CLASS 1, TYPE VII

2. THIS PRODUCT IS RoHS COMPLIANT
 AFTER FEBRUARY 1, 2020.

CUSTOMER DRAWING

					THIS DRAWING DESCRIBES A DESIGN CONSIDERED PROPRIETARY IN NATURE, DEVELOPED AND MANUFACTURED BY SWITCHCRAFT INC. AND IS RELEASED ON A CONFIDENTIAL BASIS FOR IDENTIFICATION PURPOSES ONLY.					
					SIZE	WIDTH	MULT	LBS/M	TEMPER	
					UNLESS OTHERWISE SPECIFIED			MATERIAL		
					1. ALL DIMENSIONS IN INCHES			SPEC No.		
					- TWO PLACE DECIMALS ±0.02			FIRST USED ON		
					- THREE PLACE DECIMALS ±0.005			SCALE 1.75:1		
F	28256	1/23/20	TJK	TJK	DATE DRAWN	BY	CHKD	APVD	Switchcraft [®]	
E	28160	4/12/19	TJK	TJK	3-13-93	SG	JP	GHJ		
D	26771	05/13/11	JEB	TJK	3-26-93		3-26-93			
REV	ECO NUMBER	DATE	BY	APVD	NAME			PART No.		
REVISIONS					DO NOT SCALE DRAWING			JAX COVER, RoHS		SHEET 1 OF 1
								2C1079		REV F

SolidWorks CAD File

