



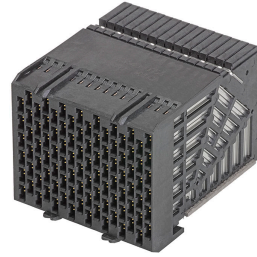
Part Number : [1736311016](#)

Product Description : Impulse 90 Ohm 6-Pair Orthogonal Daughtercard, 2.00mm Pitch, Unguided, 16 Columns, 96 Differential Pair

Series Number : 173631

Status : Active

Product Category : Backplane Connectors



Documents & Resources

Drawings

[1736311016_sd.pdf](#)

[2001991410-000.pdf](#)

[2002140008-000.pdf](#)

[1736312000-PK.pdf](#)

3D Models and Design Files

[1736311016_stp.zip](#)

[2001991410-000.zip](#)

[2002140008-000.zip](#)

Specifications

[1735109996-AS-000.pdf](#)

[1735109997-AS-000.pdf](#)

[1735109998-AS-000.pdf](#)

[1735109999-AS-000.pdf](#)

[1735109000-PS-000.pdf](#)

Tooling Specifications

[2001991410-000.pdf](#)

[2002140008-000.pdf](#)

Product Environment Compliance

Compliance

GADSL/IMDS	Not Relevant
China RoHS	
EU ELV	Not Relevant
Low-Halogen Status	Low-Halogen per IEC 61249-2-21
REACH SVHC	Not Contained per D(2024)6225-DC (07 Nov 2024)

EU RoHS	Compliant per EU 2015/863
---------	---------------------------

Multiple Part Product Compliance Statements

- Eu RoHS
- REACH SVHC
- Low-Halogen

Multiple Part Industry Compliance Documents

- IPC 1752A Class C
- IPC 1752A Class D
- Molex Product Compliance Declaration
- IEC-62474
- chemSHERPA (xml)

EU RoHS Certificate of Compliance

Part Details

General

Status	Active
Category	Backplane Connectors
Series	173631
Description	Impulse 90 Ohm 6-Pair Orthogonal Daughtercard, 2.00mm Pitch, Unguided, 16 Columns, 96 Differential Pair
Application	Daughtercard
Component Type	PCB Receptacle
Product Name	Impulse
UPC	193264429806

Agency

UL	E29179
----	--------

Electrical

Current - Maximum per Contact	0.75A
Data Rate	112 Gbps (PAM-4)
Impedance	90Ω
Shield Type	Full Shield
Shielded	Yes
Voltage - Maximum	150V AC (RMS)/DC

Physical

Circuits (Loaded)	192
Circuits (maximum)	192
Color - Resin	Black
Durability (mating cycles max)	200
First Mate / Last Break	No
Flammability	94V-0
Guide to Mating Part	No
Keying to Mating Part	None
Material - Metal	High Performance Copper Alloy
Material - Plating Mating	Gold
Material - Plating Termination	Tin
Material - Resin	High Temperature Thermoplastic
Net Weight	72.297/g
Number of Columns	16
Number of Pairs	6
Number of Rows	12
Orientation	Right Angle
Packaging Type	Tray
PC Tail Length	1.30mm
PCB Locator	No
PCB Retention	None
PCB Thickness - Recommended	1.00mm
Pitch - Mating Interface	2.00mm
Pitch - Termination Interface	2.00mm
Plating min - Mating	0.762µm
Temperature Range - Operating	-55° to +85°C
Termination Interface Style	Through Hole - Compliant Pin

Mates With / Use With

Mates with Part(s)

Description	Part Number
-------------	-------------

Impulse 90 Ohm 8-Pair 90° Orthogonal Header, 2.00mm Pitch, Unguided, 12 Columns, 96 Differential Pair	<u>1736252205</u>
--	-------------------

This document was generated on Feb 13, 2025